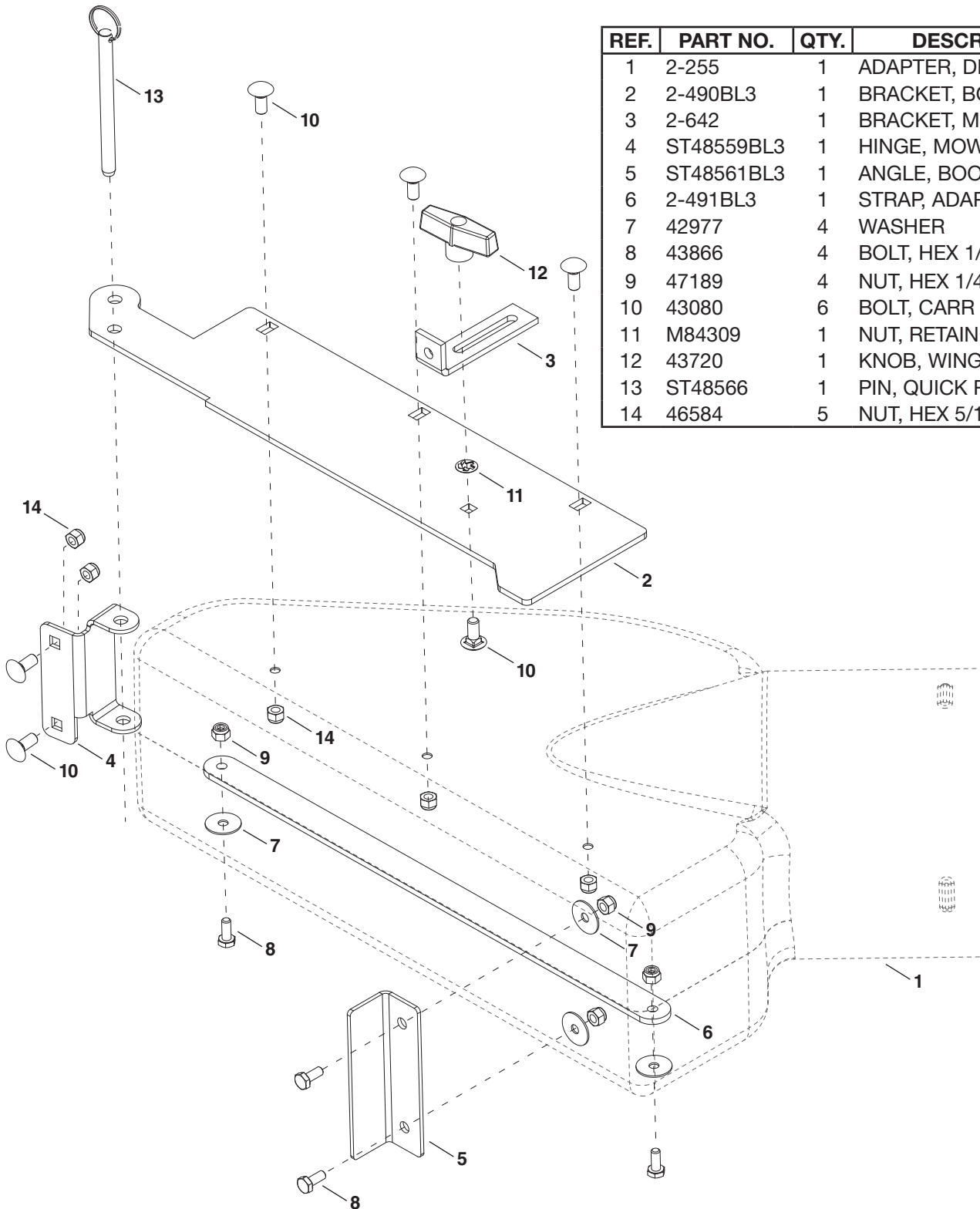




45-0607

REF.	PART NO.	QTY.	DESCRIPTION
1	2-255	1	ADAPTER, DECK
2	2-490BL3	1	BRACKET, BOOT MOUNT
3	2-642	1	BRACKET, MOUNTING
4	ST48559BL3	1	HINGE, MOWER DECK
5	ST48561BL3	1	ANGLE, BOOT REAR
6	2-491BL3	1	STRAP, ADAPTER
7	42977	4	WASHER
8	43866	4	BOLT, HEX 1/4-20 X 5/8
9	47189	4	NUT, HEX 1/4-20
10	43080	6	BOLT, CARR 5/16-18 X 3/4
11	M84309	1	NUT, RETAINER
12	43720	1	KNOB, WING
13	ST48566	1	PIN, QUICK RELEASE
14	46584	5	NUT, HEX 5/16-18



FORM NO. 3-250 (01/10/23)

PARK SAFELY BEFORE INSTALLATION

1. Stop the tractor on a level surface.
2. Lock the park brake.
3. Stop the engine.
4. Remove the key.
5. Wait for engine and all moving parts to stop before you leave the operator's seat.

STEP 1: (SEE FIGURE 1)

- Position deck adapter (1) against mower deck opening. Position deck hinge (4) towards the front of the deck adapter as shown to determine placement of the hinge.
- If no holes are present on mower deck to attach the deck hinge, use the deck hinge to mark where holes are needed. Drill holes using a 5/16" drill bit.
- Attach deck hinge using two 5/16" carriage bolts (10) and 5/16" nuts (14).

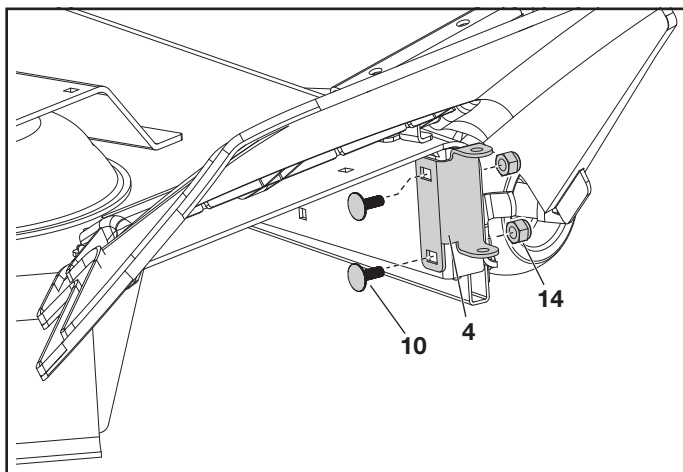


FIGURE 1

STEP 2: (SEE FIGURE 2)

- Create a template by marking around a piece of cardboard held against the edge of the deck's discharge opening.
- Tape the template to the face of the deck adapter (1), about 1/2" from front and 1/4" down from top for deeper decks. For shallow decks, position template low enough that adapter will not extend below bottom of deck. Mark outline of template on face of adapter using white crayon, nail or scribe.
- Drill a starting hole inside the outline, then use a saber saw or key hole saw to cut out the opening.

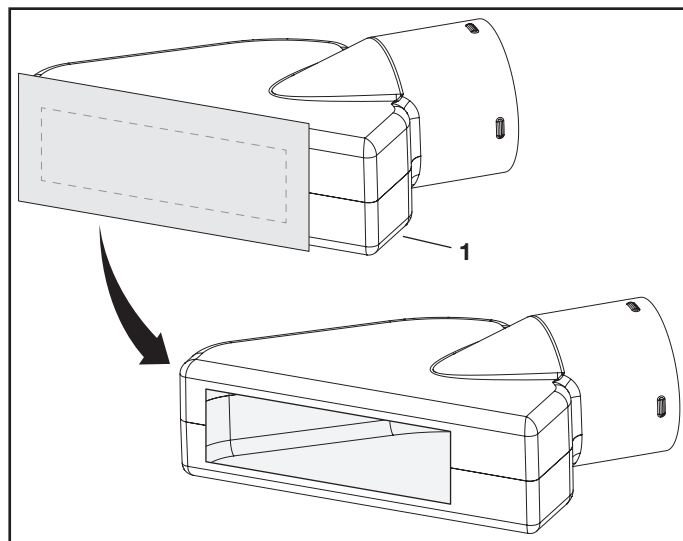


FIGURE 2

STEP 3: (SEE FIGURE 3)

- Position deck adapter (1) so that the top lip of the deck hinge is on top of the adapter while the bottom lip is inside the adapter.
- Position boot mount bracket (2) over top lip of the deck hinge (4) and insert quick release pin (13).
- Position boot mount bracket (2) in place on the deck adapter (1) and mark holes for drilling. Drill holes in deck adapter for attaching boot mount bracket.
- Place bolt (10) through the plate (2) and push on retainer (11). Use a 7/16" socket to push the retainer onto the bolt.
- Attach boot mount bracket (2) to deck adapter (1) using three 5/16" carriage bolts (10) and 5/16" nuts (14).

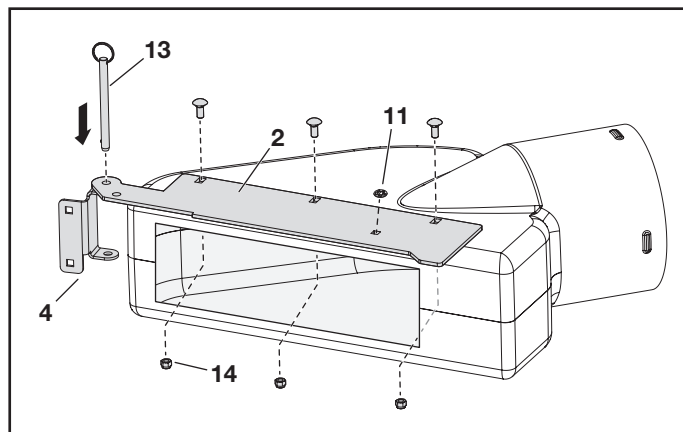


FIGURE 3

STEP 4: (SEE FIGURE 4)

- Place adapter strap (6) inside deck adapter as shown. Mark and drill holes. Attach using two 1/4" bolts (8), washers (7), and 1/4" nuts (9).

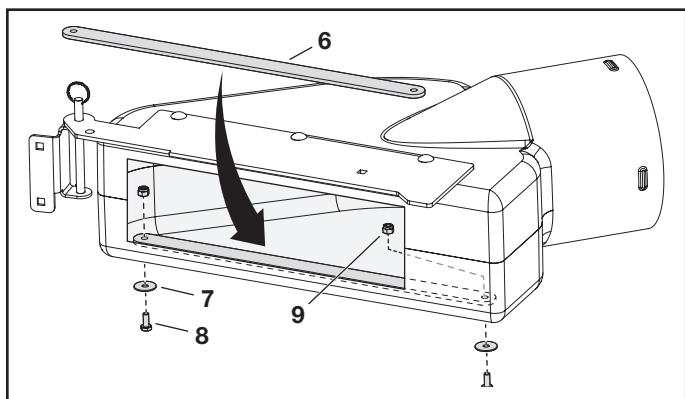


FIGURE 4

STEP 5: (SEE FIGURE 2)

- Use of the boot rear angle (5) is dependant on the size of the mower deck opening. If mower deck opening is too large, skip this step. Position boot rear angle (5) and deck adapter (1) so that boot rear angle is at the rear edge of the mower deck opening. Mark holes on the deck adapter (1) and drill. Attach boot rear angle using two 1/4" bolts (8), washers (7) and 1/4" nuts (9).

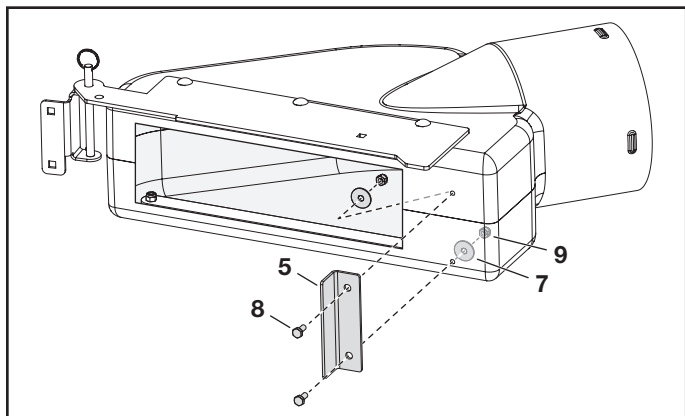


FIGURE 5

STEP 6: (SEE FIGURE 6 and FIGURE 7)

- Attach mounting bracket (3) to boot mount bracket (2) using one 5/16" carriage bolt (10), retainer nut (11), and wing knob (12).

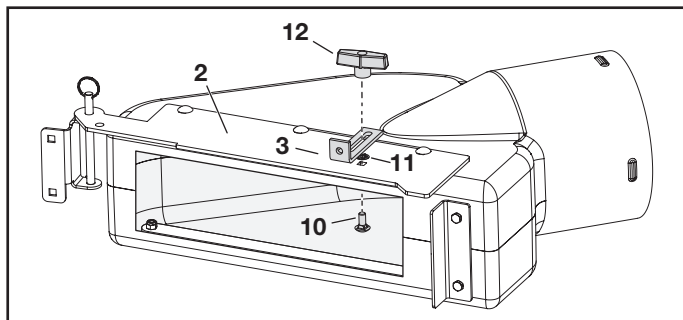


FIGURE 6

- With boot against mower deck, slide mounting bracket (3) under axle of discharge chute.

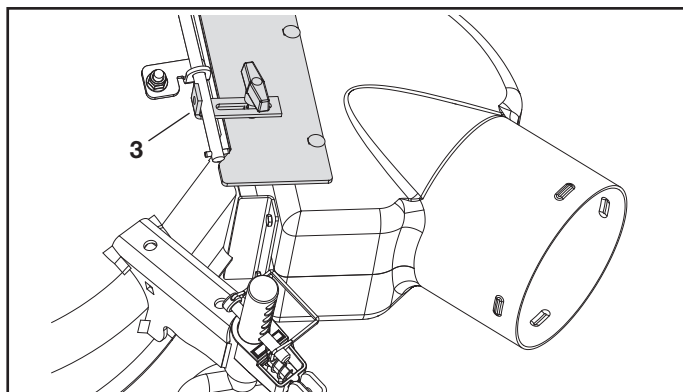


FIGURE 7

Agri-Fab, Inc. 809 South Hamilton Sullivan, IL. 61951
800-448-9282 www.agri-fab.com

