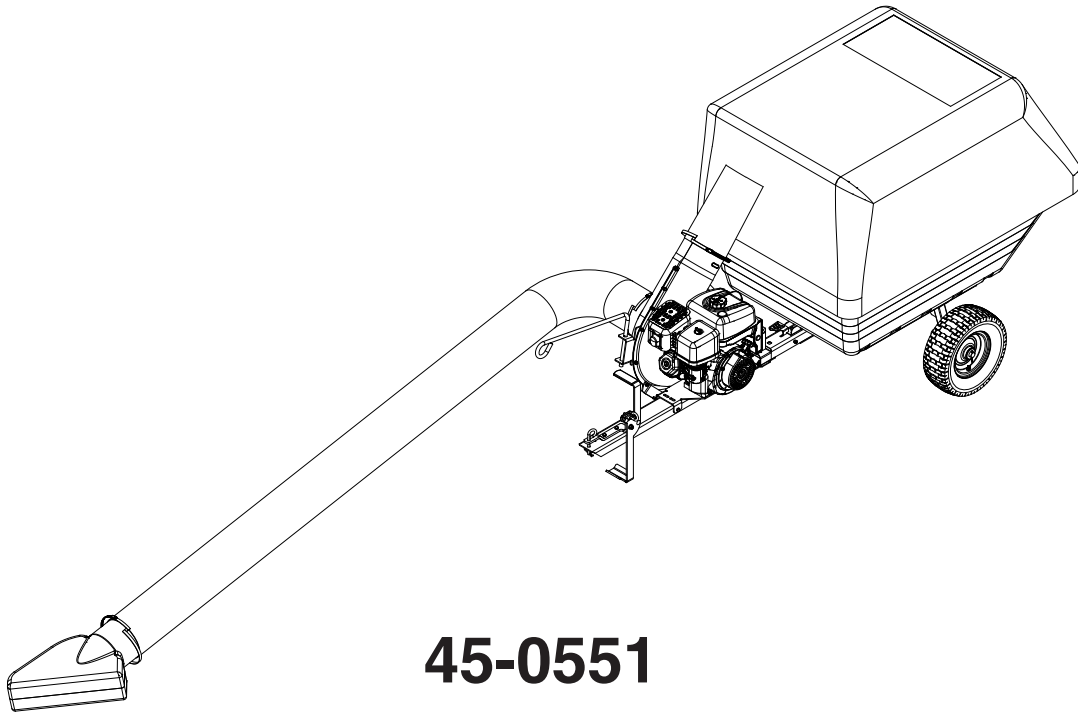


# **Agri-Fab®**

## **Lawn Care Made Easy®**



**45-0551**

**42 CU FT LAWN VAC**

**THANK YOU  
FOR YOUR PURCHASE!**

Without your product review, we don't exist.

If you are happy with our quality products & service,  
please take just a moment to leave positive feedback and  
a short review of our product on our website or your retailer's website.

**Not totally satisfied?**

If you have any issues, don't hesitate to contact us.  
We make mistakes sometimes, but please give us the chance  
to make it right before leaving negative feedback against our product.

Customer Care  
M-F 7:00 a.m. - 5:00 p.m. CST  
800-448-9282  
[www.agri-fab.com](http://www.agri-fab.com)



**IMPORTANT:** The engine is shipped without oil and gas. Add oil  
and gas before starting the engine per included engine manual.

Want more information or assembly tips?



**Video  
Instruction  
Guide**

**[youtube.com/c/agrifab](https://youtube.com/c/agrifab)**

**SpeedEPart** the *fastest* way to *purchase* parts [www.speedepart.com](http://www.speedepart.com)

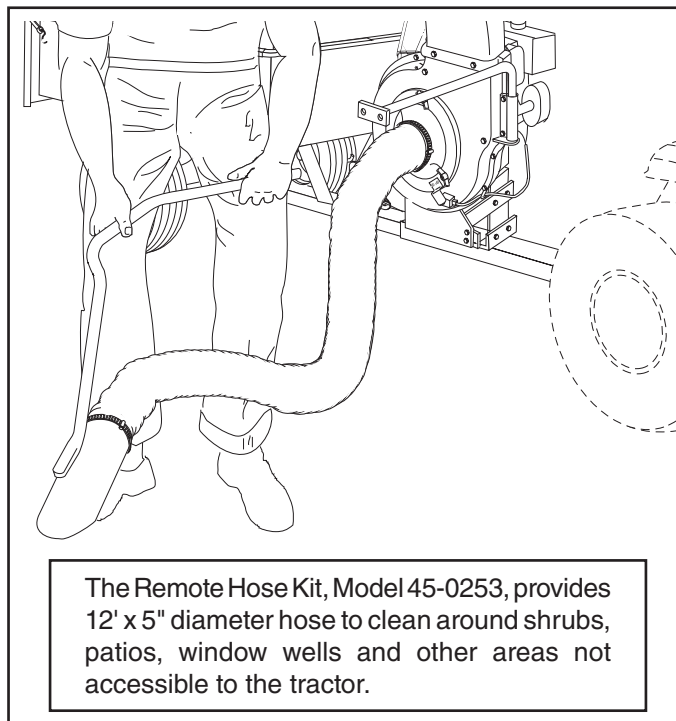
FORM NO. 3-457 (10/31/25)

## TABLE OF CONTENTS

ACCESSORIES.....	2	DECK ADAPTER 2 HARDWARE .....	17
SAFETY .....	3	ASSEMBLY .....	18
CART PARTS DIAGRAM.....	6	DECK ADAPTER INSTALLATION .....	25
ENGINE ASSEMBLY PARTS DIAGRAM.....	8	OPERATION.....	29
HOPPER PARTS DIAGRAM .....	9	MAINTENANCE .....	32
HOSE/BATTERY PARTS DIAGRAM .....	10	SERVICE .....	33
ADDITIONAL ITEMS NOT REQUIRED.....	12	STORAGE .....	33
CARTON CONTENTS .....	13	TROUBLESHOOTING.....	34
HARDWARE CONTENT .....	14	TIPS AND TRICKS .....	34
DECK ADAPTER 1 HARDWARE .....	16	SLOPE GUIDE .....	35

**NOTE:** Engine manufacturers owner's manual is located in Box 1 of 3.

## ACCESSORIES





## SAFETY



Any power equipment can cause injury if operated improperly or if the user does not understand how to operate the equipment. Exercise caution at all times when using power equipment.

- Read and follow all instructions in this manual before attempting to assemble or operate this equipment. Failure to comply with these instructions may result in serious injury or death. Keep this manual in a safe place for future reference and for ordering replacement parts.
- Read this operating and service instruction manual carefully. Be thoroughly familiar with the controls and proper use of this power vacuum.
- Read the vehicle owners manual and vehicle safe operation rules before using this equipment.
- Never allow children under 16 to operate this Mow-N-Vac. Children 16 years and older should only operate under close parental supervision.
- DO NOT allow anyone to operate this equipment without proper instructions.
- DO NOT allow passengers to ride on this equipment or the towing vehicle.
- Keep the area of operation clear of others, particularly small children and pets.
- Check fuel before starting engine. Do not fill fuel tank indoors, while engine is running or while engine is hot. Wipe off any spilled fuel before starting engine.
- Engine and muffler get hot. Do not touch! To avoid fire hazard, keep clean of debris and other accumulations.
- Never store 42 cu ft Lawn Vac with fuel in tank. Allow engine to cool before storing in any enclosure.
- Do not change engine governor settings.
- Do not operate engine if air cleaner or cover is removed except for adjustment. Removal of these parts could create a fire hazard.
- Keep hands, feet, face, long hair and clothing out of inlet and discharge area. There are ROTATING BLADES inside these openings.
- Before cleaning, repairing or inspecting, make certain all moving parts come to a complete stop. Disconnect spark plug wire and keep wire away from plug to prevent accidental starting. Keep throttle control lever in stop position.
- If the 42 cu ft Lawn Vac should become blocked with debris at any point, shut engine off and wait until the impeller comes to a complete stop before attempting to remove the obstruction. Disconnect spark plug wire to prevent accidental starting.
- If the cutting mechanism strikes a foreign object, or if your 42 cu ft Lawn Vac should start to vibrate abnormally, stop the engine immediately, disconnect spark plug wire and move the wire away from the spark plug. Allow the machine to stop and take the following steps.
  - a. Inspect for damage.
  - b. Repair or replace any damaged parts.
  - c. Check for loose parts and tighten to assure continued safe operation.
- Check all bolts for tightness at frequent intervals to help insure safe operation.
- Check top cover frequently for wear. Replace if worn or damaged.
- Never operate 42 cu ft Lawn Vac unless deck adapter, hose, hose adapter (nozzle), transition snout, and top cover are properly attached in their place.
- Do not remove top cover or attempt to empty contents of cart while engine is running.
- Never attempt to change hose adapter (nozzle) or to install remote hose attachment when engine is running.
- Keep all shields, guards, and hose adapter (nozzle) in place and securely attached.
- Always wear safety glasses or other suitable eye protection when operating or maintaining this equipment.
- Do not stand behind cart in exhaust discharge area while engine is running.
- Do not operate this equipment while intoxicated or while taking drugs or medication that impairs the senses or reactions.
- When using this equipment, start the vehicle transmission in first (low) gear and then gradually increase speed only as conditions permit.
- Operate this equipment at reduced speed on rough terrain, along creeks and ditches and on slopes to prevent tipping or loss of control. Do not drive too close to a creek or ditch.
- Vehicle braking and stability are affected by the addition of this equipment. Do not fill the 42 cu ft Lawn Vac to its full capacity without checking the capability of the towing vehicle to safely pull and stop with 42 cu ft Lawn Vac attached.
- Before operating on any grade (hill) refer to the safety rules in the vehicle owner's manual concerning safe operation on slopes. Also refer to the SLOPE GUIDE on page 25 of this owner's manual. Do not operate on slopes in excess of 10 degrees. **STAY OFF STEEP SLOPES!**
- Follow the maintenance instructions outlined in this manual.



**NOTE:** Make sure you are using hearing protection at all times while the engine is running.



Look for this symbol to point out important safety precautions. It means — **Attention!! Become alert!! Your safety is involved.**



**DANGER:** This 42 cu ft Lawn Vac was built to be operated according to the rules for safe operation in this manual. As with any type of power equipment, carelessness or error on the part of the operator can result in serious injury. This unit is capable of amputating fingers and hands and throwing objects. Failure to observe the safety instructions could result in serious injury or death.

# **WARNING**

## **TO AVOID SERIOUS INJURY**

- Read Owner's Manual and all safety labels on machine before starting and using machine.
- Do Not remove top cover or attempt to empty contents of cart while engine is running.
- Do Not stand behind cart in exhaust discharge area while engine is running.
- Keep hands, feet, face, long hair, and clothing out of chipper inlet, vac inlet, and discharge area. There are ROTATING BLADES inside these openings.
- Wear approved safety glasses and gloves. Avoid loose fitting clothes.
- Keep the area of operation clear of all persons, particularly small children and pets.
- Keep all shields, guards and nozzle in place and securely attached.
- If unit becomes clogged or jammed, shut off engine right away. Do Not attempt to clear clog or jam with engine running.
- Muffler and engine get hot and can cause burns. Do Not Touch. To avoid a fire hazard, keep leaves, grass and other combustible debris off hot muffler and engine.
- Do Not attempt to remove or attach vac nozzle or optional Hose Kit with engine running.
- Do Not operate unit unless nozzle or optional Hose Kit is secured in place.
- Do Not fill gas tank while engine is running. Allow engine to cool at least 2 minutes before refueling.



# **DANGER**

**HAZARDOUS ROTATING BLADES INSIDE. KEEP HANDS AWAY FROM ALL OPENINGS. DO NOT REMOVE OR ATTACH HOSE, HOSE ADAPTER, ELBOW OR OPTIONAL HOSE KIT WHEN ENGINE IS RUNNING!**





# **WARNING**

This unit is equipped with an internal combustion engine and should not be used on or near unimproved forest-covered, or grass-covered land unless the engine's exhaust system is equipped with a spark arrester meeting applicable local or state laws (if any). If a spark arrester is used, it should be maintained in effective working order by the operator.

In the State of California the above is required by law (Section 4442 of the California Public Resources Code). Other states may have similar laws. Federal laws apply on federal lands. A spark arrester muffler is available at your nearest engine authorized service center.

## SAFETY LABELS

	<p><b>! DANGER</b></p> <p>Rotating blades can crush and cut.</p> <p>Do not operate with hose removed.</p> <p>Always turn off machine before clearing clog or jam.</p>
	<p><b>! WARNING</b></p> <p>Read and understand the owner's manual before operating this lawn vac.</p> <p>Failure to follow operating instructions could result in death or serious injury.</p>

agri-fab.com

800-448-9282

Reorder No. 3-18

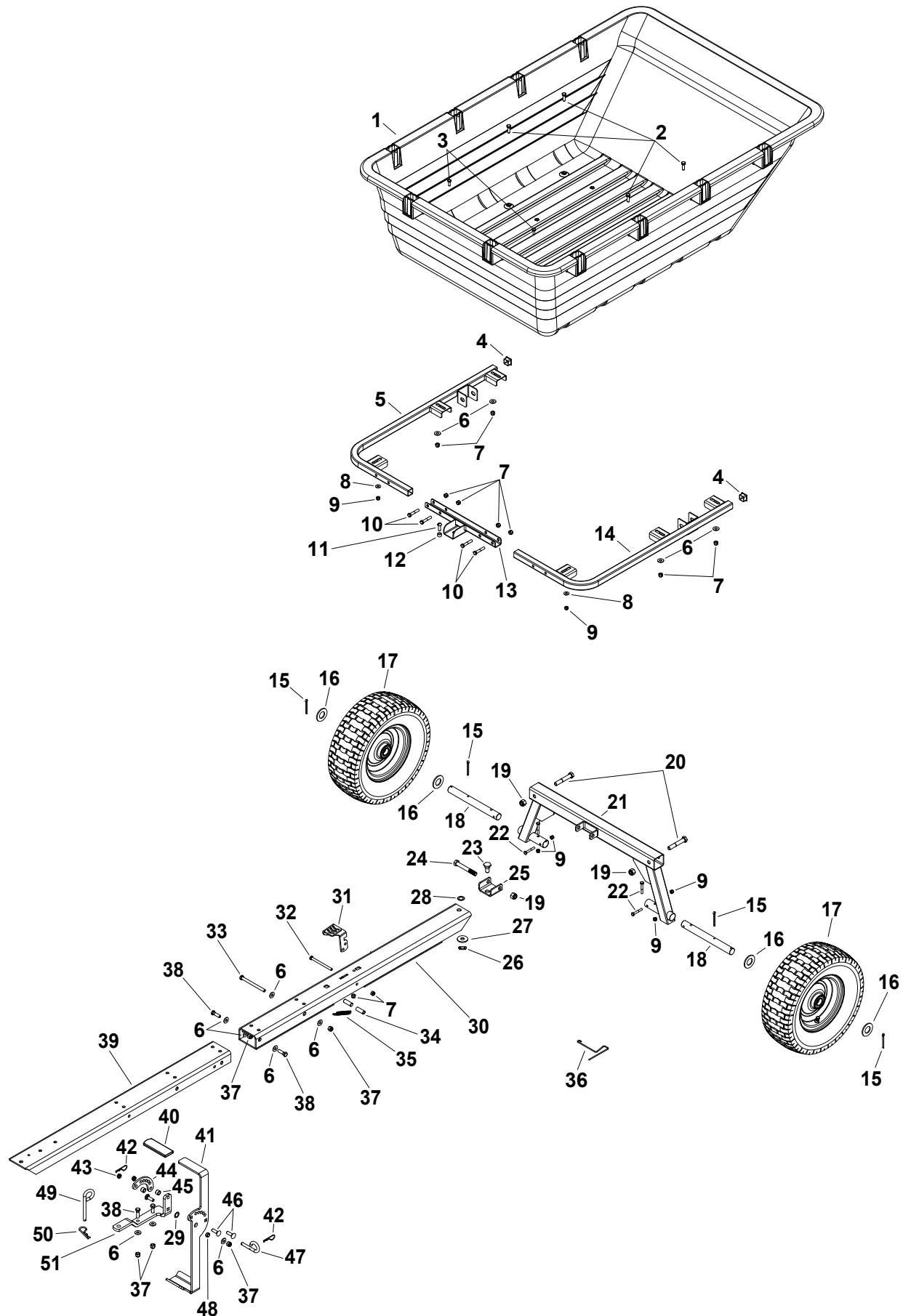
<b>! WARNING</b>	<b>! ¡ATENCIÓN!</b>	<b>! ATTENTION</b>
<ol style="list-style-type: none"> <li>1. DO NOT CARRY PASSENGERS</li> <li>2. DO NOT EXCEED MAXIMUM TOWING SPEED</li> <li>3. NOT FOR HIGHWAY USE</li> <li>4. DO NOT EXCEED LOAD CAPACITY</li> <li>5. STAY OFF STEEP SLOPES AND GRADES</li> <li>6. VEHICLE BRAKING AND STABILITY WILL BE AFFECTED BY HEAVY LOADS</li> <li>7. REFER TO MANUAL FOR FULL INSTRUCTIONS</li> </ol>	<ol style="list-style-type: none"> <li>1. NO CARGUE PASAJEROS</li> <li>2. NO EXCEDA LA VELOCIDAD MÁXIMA DE REMOLQUE</li> <li>3. NO USE EN LA CARRETERA</li> <li>4. NO EXCEDA LA CAPACIDAD DE CARGA DE LA CARRETILLA</li> <li>5. EVITE LAS SUBIDAS Y BAJADAS EMPINADAS</li> <li>6. LA HABILIDAD DE FRENAR Y LA ESTABILIDAD SERÁN AFECTADAS CON CARGAS MAYORES</li> <li>7. VEA EL MANUAL PARA LAS INSTRUCCIONES COMPLETAS</li> </ol>	<ol style="list-style-type: none"> <li>1. NE PAS TRANSPORTER DE PASSAGERS</li> <li>2. NE PAS DÉPASSER LA VITESSE MAXIMALE DU REMORQUAGE</li> <li>3. NE PAS UTILISER L'AUTOROUTE</li> <li>4. NE PAS DÉPASSER LA CAPACITÉ DE CHARGE</li> <li>5. GARDER LES PISTES ET LES GRADES</li> <li>6. LE FREINAGE ET LA STABILITÉ DU VÉHICULE SERONT TOUCHÉS PAR DES CHARGES LOURDES</li> <li>7. CONSULTEZ LE MANUEL POUR DES INSTRUCTIONS COMPLETES</li> </ol>
  		

46991

	<p><b>! WARNING</b></p> <p><b>HOT SURFACE</b></p>
---	---

M117554

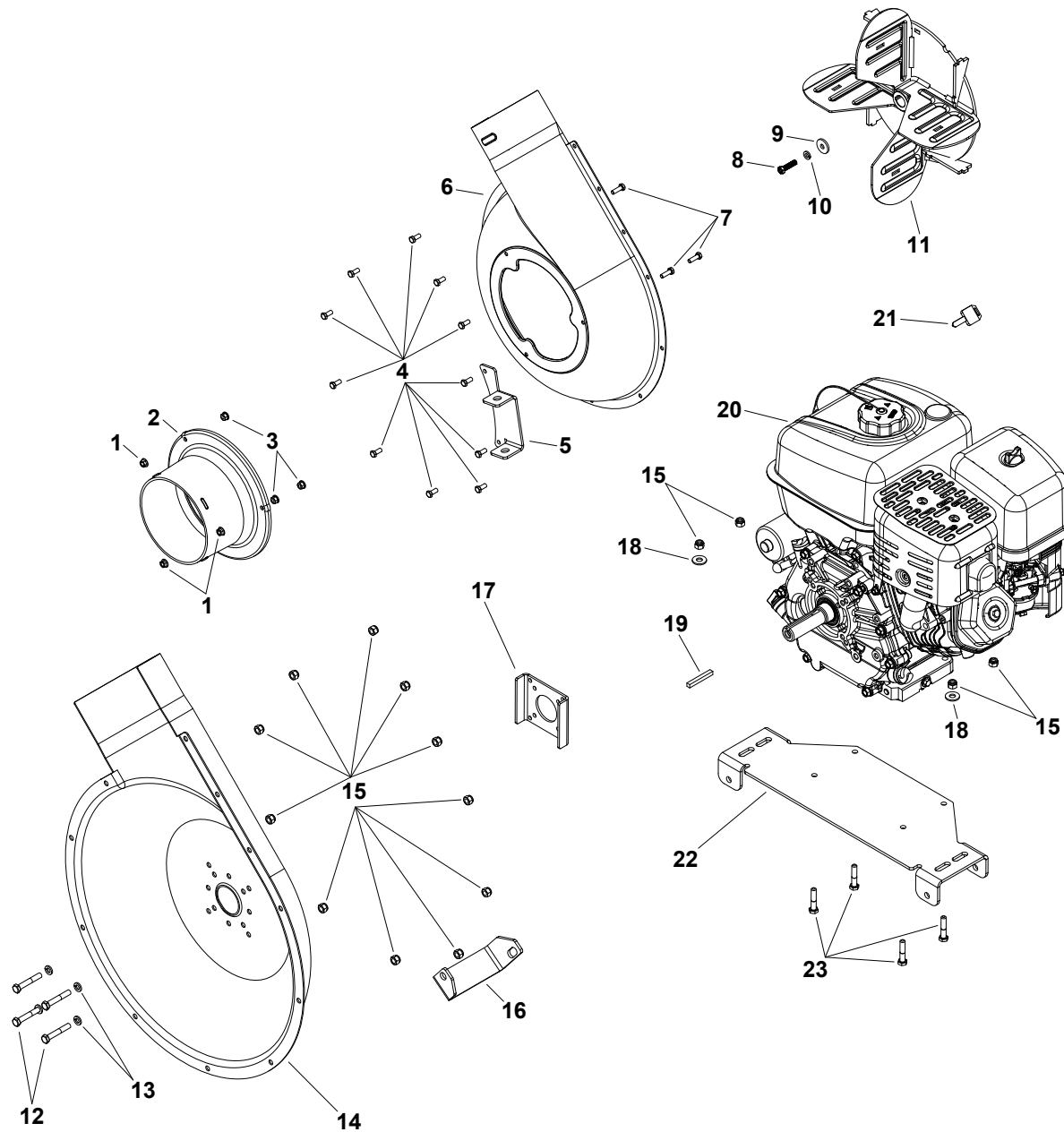
# CART FRAME PARTS DIAGRAM



## CART FRAME PARTS DIAGRAM

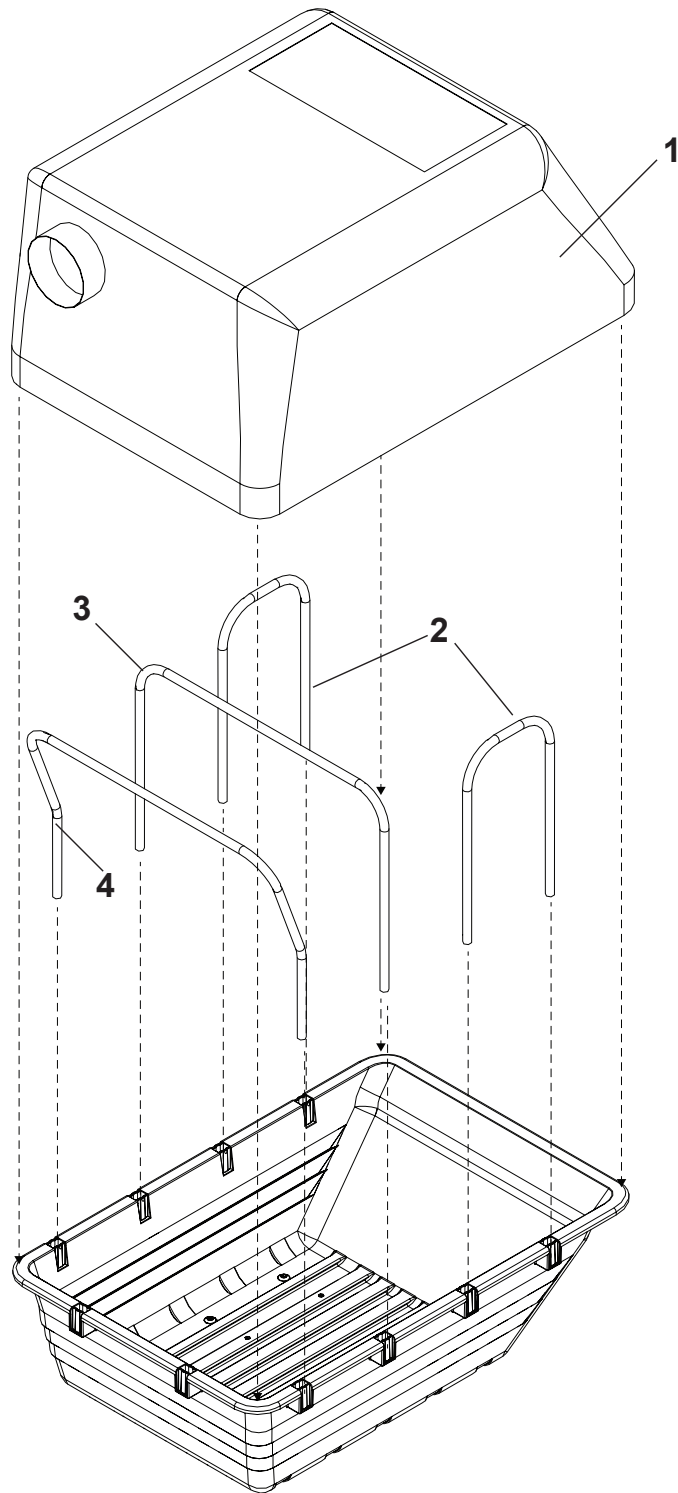
REF. NO.	PART NO.	QTY.	DESCRIPTION	REF. NO.	PART NO.	QTY.	DESCRIPTION
1	41862	1	BED, CART	27	R19172410	1	WASHER, 1-1/2"
2	43063	4	BOLT, 5/16" X 1" HEX	28	44125	1	WASHER, 1"
3	43012	2	BOLT, 1/4" X 3/4" HEX	29	44008	1	WASHER, 1-1/8"
4	41778	2	PLUG, SQUARE	30	6-1608OR1	1	ASSEMBLY, REAR TONGUE
5	6-910OR1	1	ASSEMBLY, RH FRAME	31	28258-CBL3	1	LATCH, FOOT PEDAL
6	43081	13	WASHER, 7/8"	32	47407	1	BOLT, 5/16" X 4" HEX
7	47810	10	NUT, 5/16" HEX NYLOCK	33	710-0693	1	BOLT, 3/8" X 4-1/2" HEX
8	43088	2	WASHER, 47/64"	34	41076	2	SPACER, 1/2" OD X 1-13/32" LG
9	47189	6	NUT, 1/4" HEX NYLOCK	35	47408	1	SPRING, EXTENSION
10	43084	4	BOLT, 5/16" X 1-3/4" HEX	36	47622	1	PULLER, SPRING
11	42673	1	SCREW, 5/16" X 1" RH SLOT	37	HA21362	6	NUT, 3/8" HEX NYLOCK
12	23727	1	SPACER, 9/16" OD X 23/64" LG	38	43087	4	BOLT, 3/8" X 1-1/4" HEX
13	6-913OR1	1	ASSEMBLY, LATCH WELDMENT	39	2-1211OR1	1	TONGUE, FRONT
14	6-909OR1	1	ASSEMBLY, LH FRAME	40	47707	1	GRIP, HANDLE
15	46855	4	PIN, 3/16" X 2" COTTER	41	2-1422BL3	1	BRACKET, HANDLE STAND
16	43528	4	WASHER, 2"	42	43343	2	PIN, 3/32" X 2-5/16" HAIR COTTER
17	45611	2	ASSEMBLY, WHEEL & TIRE	43	42210	2	NUT, 3/8" HEX JAM NYLOCK
18	2-1173	2	AXLE	44	2-1420BL3	1	PLATE, STAND STOP
19	41657	3	NUT, 1/2" HEX NYLOCK	45	46847	2	SPACER, 5/8" OD X 7/16" LG
20	46286	2	BOLT, 1/2" X 3" HEX	46	4-30	3	BOLT, 3/8" X 1-1/4" CARRIAGE
21	6-911OR1	1	ASSEMBLY, AXLE	47	43038	1	PIN, 3/8" X 1-1/2" PIVOT LOCK
22	1509-69	4	BOLT, 1/4" X 1-3/4" HEX	48	23625	1	SPACER, 5/8" OD X 17/64" LG
23	47363	1	BOLT, 1/2" X 1-1/8"	49	23353	1	PIN, 3/8" X 3" HITCH
24	4-48	1	BOLT, 1/2" X 3-3/4" HEX	50	714-0117	1	PIN, 5/32" X 3" HAIR COTTER
25	28750OR1	1	CLEVIS, PIVOT	51	2-1421BL1	1	BRACKET, HITCH STAND
26	48733	1	NUT, 1/2" HEX JAM	—	3-457	1	MANUAL, OWNER'S

# ENGINE ASSEMBLY PARTS DIAGRAM



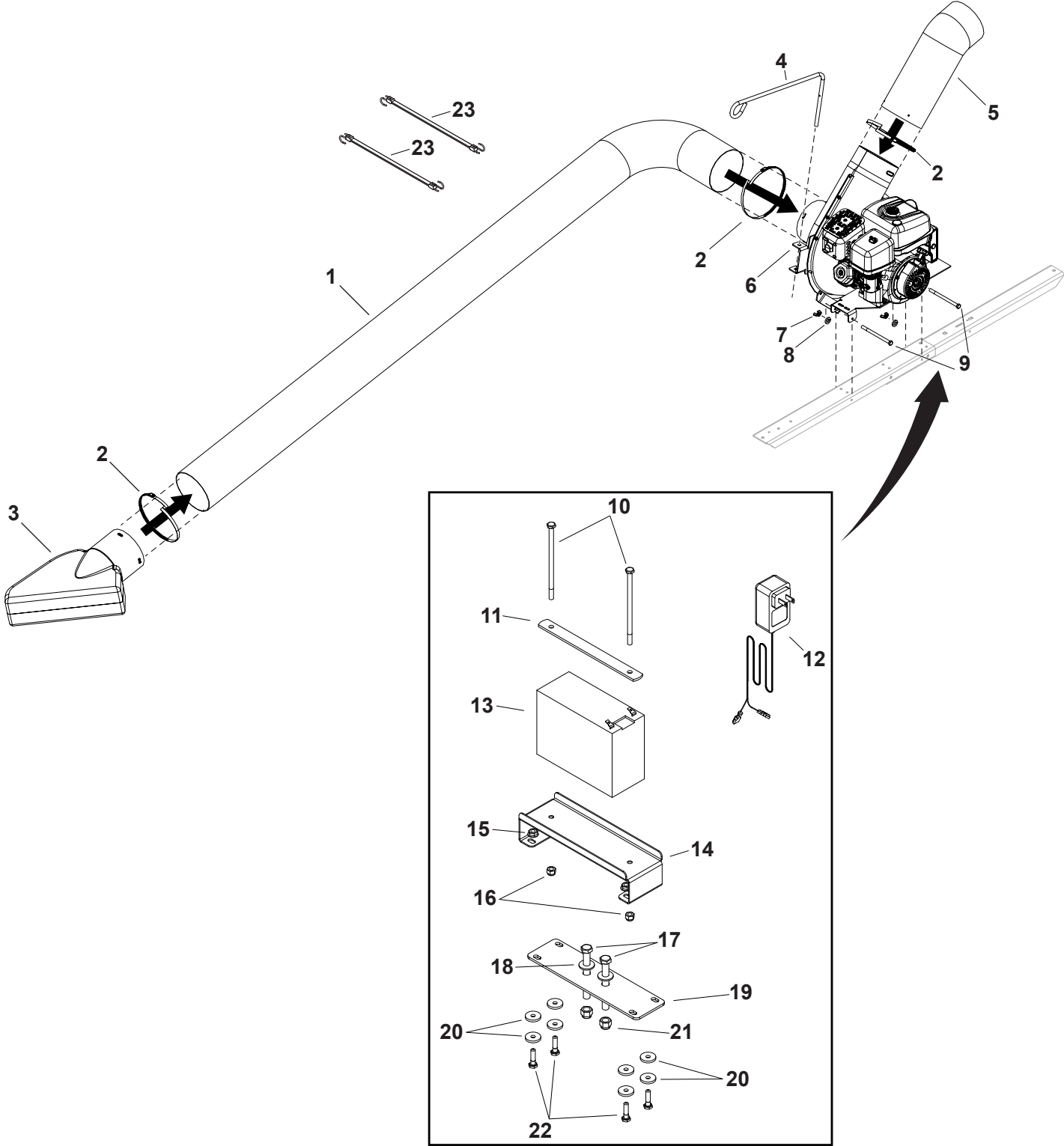
REF. NO.	PART NO.	QTY.	DESCRIPTION	REF. NO.	PART NO.	QTY.	DESCRIPTION
1	49983	3	NUT, 5/16 HEX FLANGE LOCK	13	43086	4	WASHER, 5/16" LOCK
2	2-993	1	ADAPTER, 8" HOSE	14	2-649C	1	HOUSING, INNER STEEL
3	46584	3	NUT, 5/16" HEX WHIZLOCK	15	47810	15	NUT, 5/16" HEX NYLOCK
4	43182	11	BOLT, 5/16" X 3/4" HEX	16	2-714BL3	1	BRACKET, HOUSING SUPPORT
5	2-705BL1	1	BRACKET, 8" HOSE HANGER	17	2-648	1	SPACER, ENGINE/HOUSING
6	2-708C	1	HOUSING, OUTER STEEL	18	43081	2	WASHER, 5/64"
7	43063	3	BOLT, 5/16" X 1" HEX	19	23477	1	KEY, 1/4" X 1/4" X 2" SQUARE
8	2-1453	1	BOLT, 3/8" X 1-1/4" HEX	20	2-707	1	ENGINE, 306 CC 10.0 HP
9	42828	1	WASHER, 1-1/4"	21	2-1498	1	KEY, ENGINE (SERVICE PART)
10	43003	1	WASHER, 3/8" LOCK	22	2-706BL3	1	BASE, ENGINE
11	6-991	1	ASSEMBLY, IMPELLER	23	43085	4	BOLT, 5/16" X 1-1/2" HEX
12	710-0772	4	BOLT, 5/16" X 2" HEX				

HOPPER PARTS DIAGRAM



REF. NO.	PART NO.	QTY.	DESCRIPTION
1	45911	1	COVER
2	2-709BL3	2	TUBE, SMALL HOPPER
3	45913BL3	1	TUBE, HOPPER
4	45912BL3	1	TUBE, ANGLED HOPPER

## HOSE/BATTERY PARTS DIAGRAM

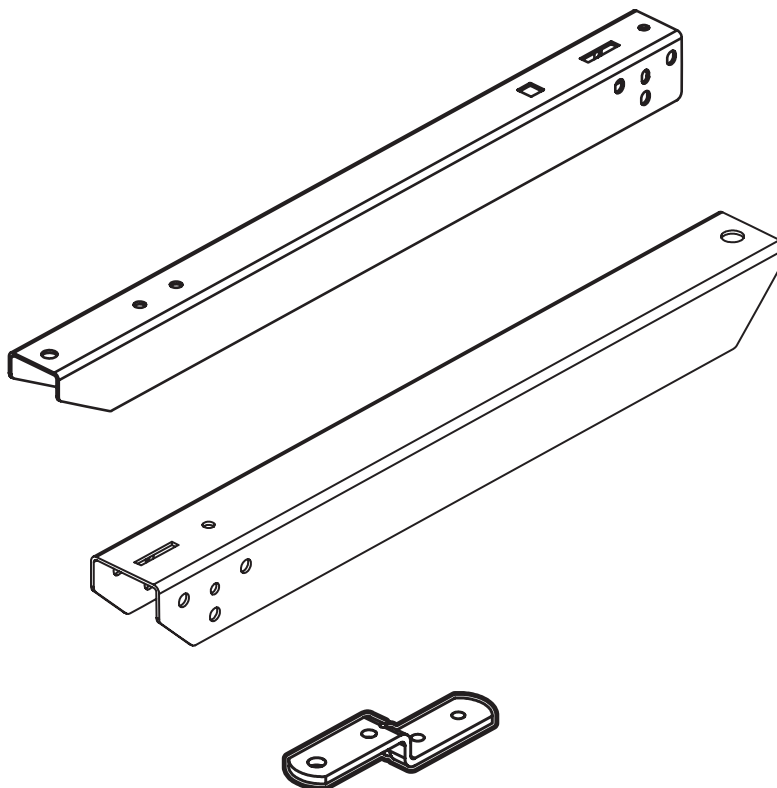


## HOSE/BATTERY PARTS DIAGRAM

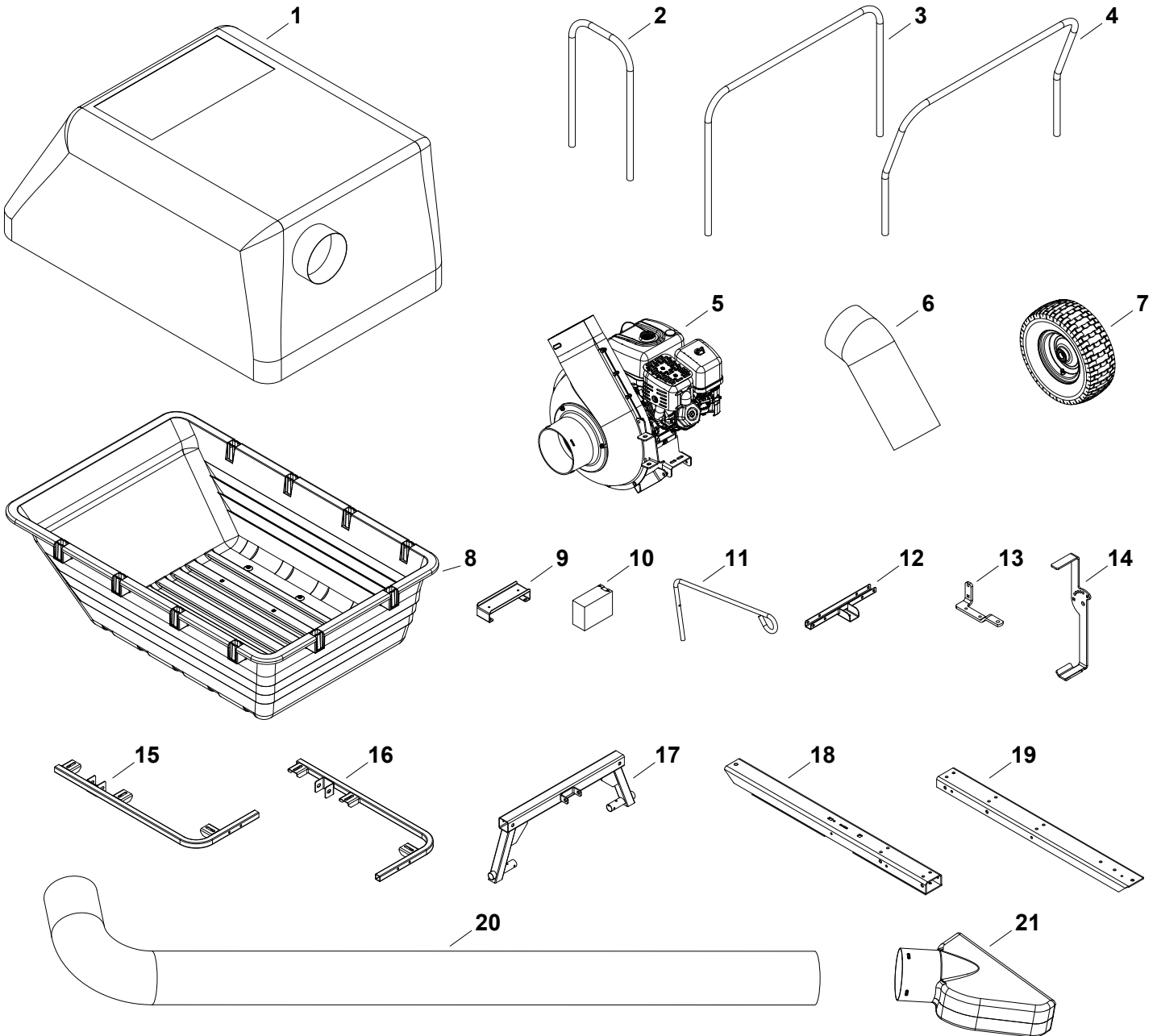
REF. NO.	PART NO.	QTY.	DESCRIPTION	REF. NO.	PART NO.	QTY.	DESCRIPTION
1	2-710	1	HOSE, 8" (DECK TO ENGINE)	14	28224BL3	1	BRACKET, BATTERY BOX
2	2-712	3	CLAMP, 8" HOSE	15	47598	4	NUT, 1/4" HEX LOCK
3	2-255	1	ADAPTER, DECK	16	47189	2	NUT, 1/4" HEX NYLOCK
4	49974BL3	1	ROD, HOSE HANGER	17	46938	2	BOLT, 3/8" X 3-1/4" HEX
5	2-711	1	HOSE, 8" (ENGINE TO BED)	18	43081	2	WASHER, 7/8"
6	2-705BL1	1	BRACKET, 8" HOSE HANGER	19	2-1402BL3	1	STRAP, BATTERY BOX BRACKET
7	2-1455	2	NUT, 3/8" WING	20	2-718	8	WASHER, 7/8" RUBBER
8	43003	2	WASHER, 11/16" LOCK	21	HA21362	2	NUT, 3/8" HEX NYLOCK
9	4-60	2	BOLT, 3/8" X 5-1/4" HEX	22	43661	4	BOLT, 1/4" X 1" HEX
10	41125	2	BOLT, 1/4" X 5" HEX	23	43790	2	STRAP, 25" TARP
11	28228BL3	1	STRAP, BATTERY HOLD DOWN	—	28227	1	WIRE, BATTERY CABLE (BLACK)
12	2-1424	1	CHARGER, BATTERY	—	2-1503	1	WIRE, BATTERY CABLE (RED)
13	2-1423	1	BATTERY, 12V				

## ADDITIONAL ITEMS NOT REQUIRED FOR THIS UNIT

- Find the frame kit box in the box 2 of 3.
- Open the frame kit box and pull out the two channel pieces and the hitch bracket. See below for part image.
- These pieces will not be used for assembling this product. Pieces can be discard.
- Some of the hardware will not be used. Make sure to use the hardware that is called out in the step.



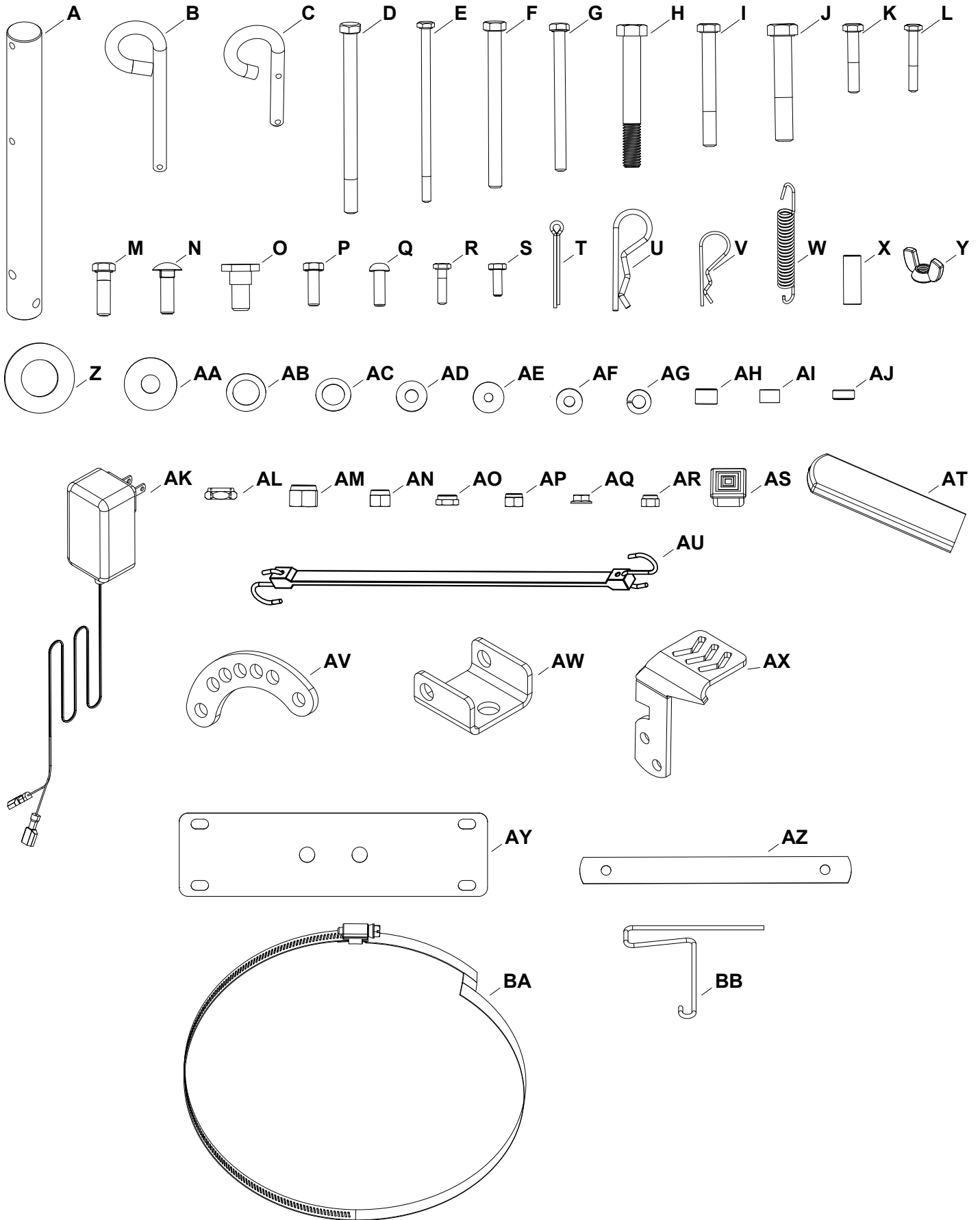
# CARTON CONTENTS



REF. NO.	PART NO.	QTY.	DESCRIPTION	REF. NO.	PART NO.	QTY.	DESCRIPTION
1	45911	1	COVER	12	6-913OR1	1	ASSEMBLY, LATCH WELDMENT
2	2-709BL3	2	TUBE, SMALL HOPPER	13	2-1421BL1	1	BRACKET, HITCH STAND
3	45913BL3	1	TUBE, HOPPER	14	2-1422BL3	1	BRACKET, STAND HANDLE
4	45912BL3	1	TUBE, ANGLED HOPPER	15	6-910OR1	1	ASSEMBLY, RH FRAME
5	—	1	ASSEMBLY, ENGINE	16	6-909OR1	1	ASSEMBLY, LH FRAME
6	2-711	1	HOSE, 8" (ENGINE TO BED)	17	6-911OR1	1	ASSEMBLY, AXLE FRAME
7	45611G	2	ASSEMBLY, WHEEL & TIRE	18	6-1608OR1	1	ASSEMBLY, REAR TONGUE
8	41862	1	BED, POLY	19	2-1211OR1	1	ASSEMBLY, FRONT TONGUE
9	28224BL3	1	BRACKET, BATTERY BOX	20	2-710	1	HOSE, 8" (DECK TO ENGINE)
10	2-1423	1	BATTERY, 12V	21	2-255	1	ADAPTER, DECK
11	49974BL3	1	ROD, HOSE HANGER				

**PARTS NOT SHOWN AT FULL SIZE**

# HARDWARE CONTENT

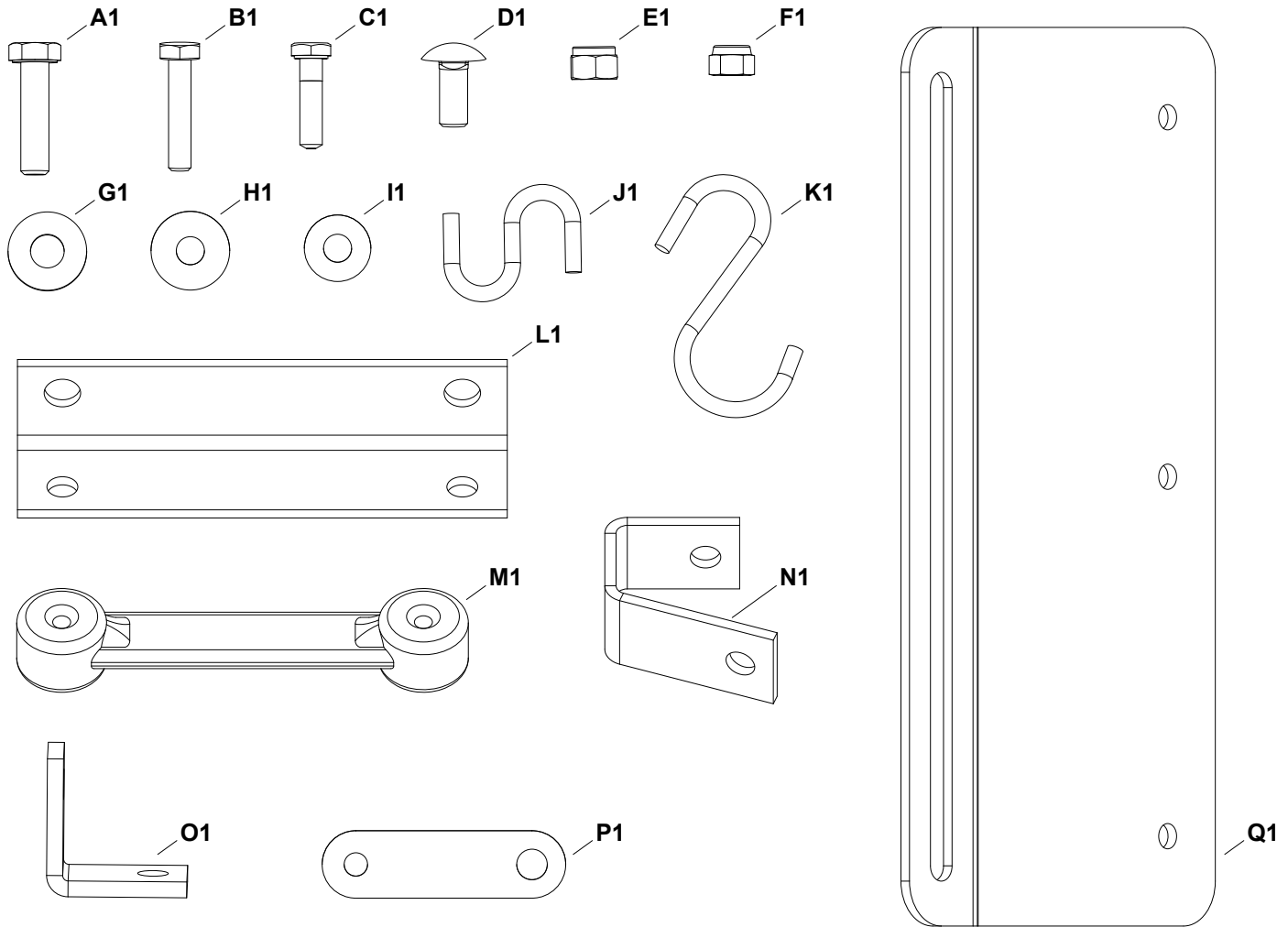


PARTS NOT SHOWN AT FULL SIZE

## HARDWARE CONTENT

REF. NO.	PART NO.	QTY.	DESCRIPTION	REF. NO.	PART NO.	QTY.	DESCRIPTION
A	2-1173	2	AXLE	AB	44008	1	WASHER, 1-1/8"
B	23353	1	PIN, 3/8" X 3" HITCH	AC	44125	1	WASHER, 1"
C	43038	1	PIN, 3/8" X 1-1/2" PIVOT LOCK	AD	43081	15	WASHER, 7/8"
D	4-60	2	BOLT, 3/8" X 5-1/4" HEX	AE	2-718	8	WASHER, 7/8" RUBBER
E	41125	2	BOLT, 1/4" X 5" HEX	AF	43353	1	WASHER, 7/8" LOCK
F	710-0693	1	BOLT, 3/8" X 4-1/2" HEX	AG	43088	2	WASHER, 47/64"
G	47407	1	BOLT, 5/16" X 4" HEX	AH	46847	2	SPACER, 5/8" OD X 7/16" LG
H	4-48	1	BOLT, 1/2" X 3-3/4" HEX	AI	23727	1	SPACER, 9/16" OD X 23/64" LG
I	46938	2	BOLT, 3/8" X 3-1/4" HEX	AJ	23625	1	SPACER, 5/8" OD X 17/64" LG
J	46286	2	BOLT, 1/2" X 3" HEX	AK	2-1424	1	CHARGER, BATTERY
K	43084	4	BOLT, 5/16" X 1-3/4" HEX	AL	48733	1	NUT, 1/2" HEX JAM
L	1509-69	4	BOLT, 1/4" X 1-3/4" HEX	AM	41657	3	NUT, 1/2" HEX NYLOCK
M	43087	4	BOLT, 3/8" X 1-1/4" HEX	AN	HA21362	8	NUT, 3/8" HEX NYLOCK
N	4-30	3	BOLT, 3/8" X 1-1/4" CARRIAGE	AO	42210	2	NUT, 3/8" HEX JAM NYLOCK
O	47363	1	BOLT, 1/2" X 1-1/8"	AP	47810	10	NUT, 5/16" HEX NYLOCK
P	43063	4	BOLT, 5/16" X 1" HEX	AQ	47598	4	NUT, 1/4" HEX LOCK
Q	42673	1	SCREW, 5/16" X 1" RH SLOT	AR	47189	8	NUT, 1/4" HEX NYLOCK
R	43661	4	BOLT, 1/4" X 1" HEX	AS	41778	2	PLUG, SQUARE
S	43012	2	BOLT, 1/4" X 3/4" HEX	AT	47707	1	GRIP, HANDLE
T	46855	4	PIN, 3/16" X 2" COTTER	AU	43790	2	STRAP, 25" TARP
U	714-0117	1	PIN, 5/32" X 3" HAIR COTTER	AV	2-1420BL3	1	PLATE, STAND STOP
V	43343	2	PIN, 3/32" X 2-5/16" HAIR COTTER	AW	28750BL3	1	CLEVIS, PIVOT
W	47408	1	SPRING, EXTENSION	AX	28258-CBL3	1	LATCH, FOOT PEDAL
X	41076	2	SPACER, 1/2" OD X 1-13/32" LG	AY	2-1402BL3	1	STRAP, BATTERY BOX BRACKET
Y	2-1455	2	NUT, 3/8" WING	AZ	28228BL3	1	STRAP, BATTERY HOLD DOWN
Z	43528	4	WASHER, 2"	BA	2-712	3	CLAMP, 8" HOSE
AA	R19172410	1	WASHER, 1-1/2"	BB	47622	1	PULLER, SPRING

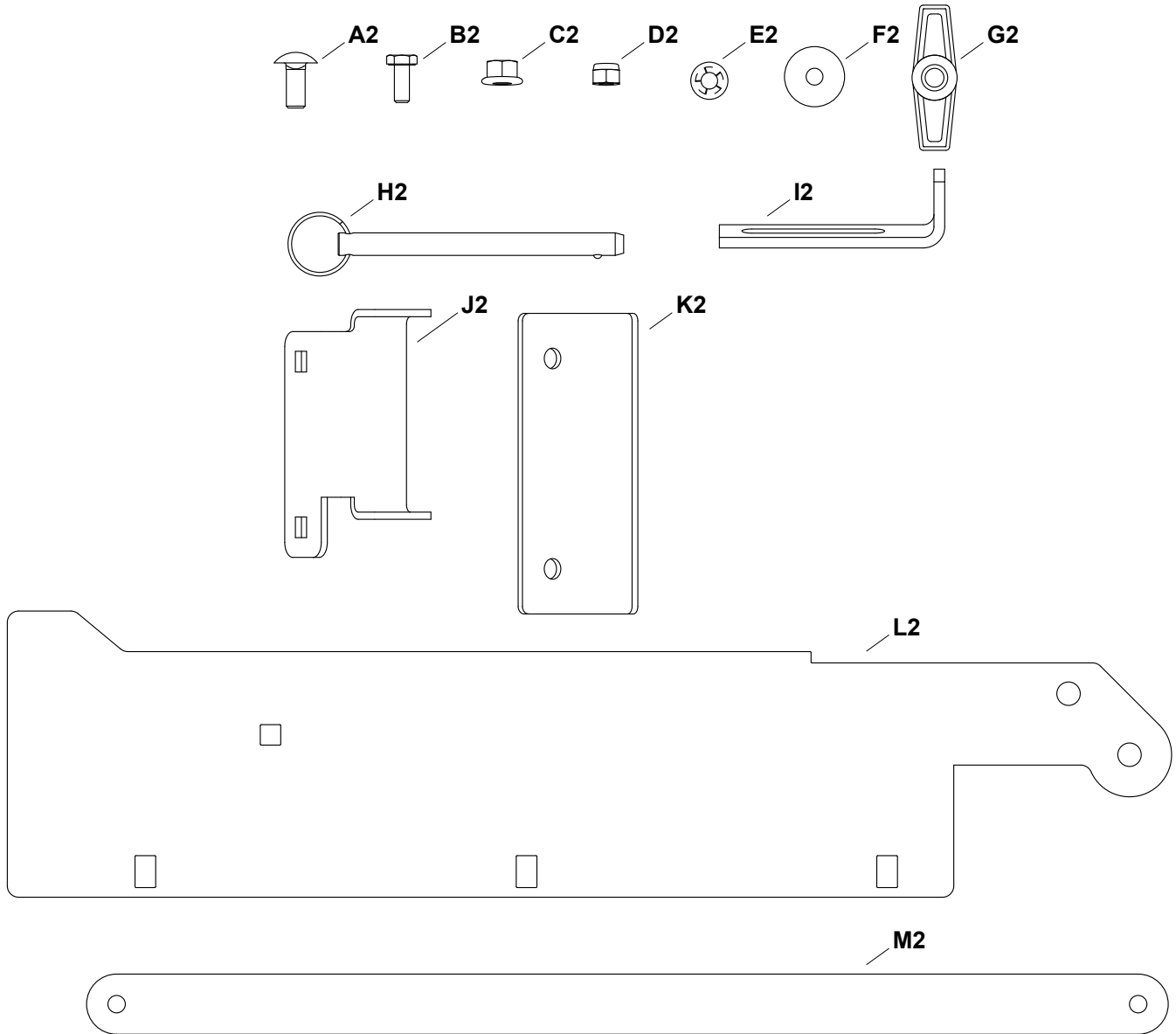
## DECK ADAPTER 1 HARDWARE



REF. NO.	PART NO.	QTY.	DESCRIPTION	REF. NO.	PART NO.	QTY.	DESCRIPTION
A1	43840	2	BOLT, 5/16" X 1-1/4" HEX	J1	44849	2	HOOK, SMALL "S"
B1	1509-90	3	BOLT, 1/4" X 1-1/4" HEX	K1	42749	1	HOOK, LARGE "S"
C1	43661	4	BOLT, 1/4" X 1" HEX	L1	27304BL1	1	BRACKET, ATTACHMENT
D1	43080	2	BOLT, 5/16" X 3/4" CARRIAGE	M1	44850	2	STRAP, TARP
E1	47810	3	NUT, 5/16" HEX NYLOCK	N1	23827	1	BRACKET, MOUNTING
F1	47189	5	NUT, 1/4" HEX NYLOCK	O1	23826	1	BRACKET, ANGLE
G1	43081	12	WASHER, 7/8"	P1	23825	1	STRAP, MOUNTING
H1	1543-69	5	WASHER, 3/4" NYLON	Q1	23560BL1	1	BRACKET, MOWER ADAPTER
I1	43088	9	WASHER, 47/64"	—	6-1911	1	KIT 1, ADAPTER (INCLUDES A1-Q1)

**PARTS NOT SHOWN AT FULL SIZE**

## DECK ADAPTER 2 HARDWARE



REF. NO.	PART NO.	QTY.	DESCRIPTION	REF. NO.	PART NO.	QTY.	DESCRIPTION
A2	43080	6	BOLT, 5/16" X 3/4" CARRIAGE	I2	2-642	1	BRACKET, MOUNTING
B2	43866	4	BOLT, 1/4" X 5/8" HEX	J2	ST48559BL3	1	HINGE, MOWER DECK
C2	46584	5	NUT, 5/16" HEX WHIZLOCK	K2	ST48561BL3	1	ANGLE, REAR BOOT
D2	47189	4	NUT, 1/4" HEX NYLOCK	L2	2-490BL3	1	BRACKET, BOOT MOUNT
E2	M84309	1	NUT, RETAINER	M2	2-491BL3	1	STRAP, ADAPTER
F2	42977	4	WASHER, 1"	—	6-1912	1	KIT 2, ADAPTER (INCLUDES A2-M2)
G2	43720	2	KNOB, 5/16" WING				
H2	ST48566	1	PIN, 3/8" DIA. QUICK RELEASE				

**PARTS NOT SHOWN AT FULL SIZE**

# ASSEMBLY

**NOTE:** This unit is shipped **WITHOUT GASOLINE or OIL**. After assembly, see separate engine manual for proper fuel and engine oil recommendations.

## TOOLS REQUIRED FOR ASSEMBLY

- (1) Flat Head Screwdriver
- (1) Pliers
- (2) 7/16" Wrenches
- (2) 1/2" Wrench
- (2) 9/16" Wrenches
- (2) 3/4" Wrenches
- (1) 15/16" Wrench

## REMOVAL OF PARTS FROM CARTONS

- Remove the hardware packs and all loose parts from the cartons.
- Remove the larger items from the pallet.
- Lay out and identify parts shown in carton contents.
- Lay out and identify parts in the hardware packs. Keep contents of each hardware package separate.
- The key for the electric start is zip tied to the wiring behind the ignition switch.

## CART ASSEMBLY

- Install two 3/8" x 1-1/4" bolts (M) through the hitch stand bracket (13) and the front tongue assy. (19).
- Secure the two bolts (M) with two 7/8" washers (AD) and 3/8" nylock nuts (AN) on the bottom side of the front tongue assy. (19).
- Place the 3/8" x 3" pin (B) into the front hole on the hitch stand bracket (13) and secure using a 5/32" x 3" hair cotter pin (U). See figure 1.

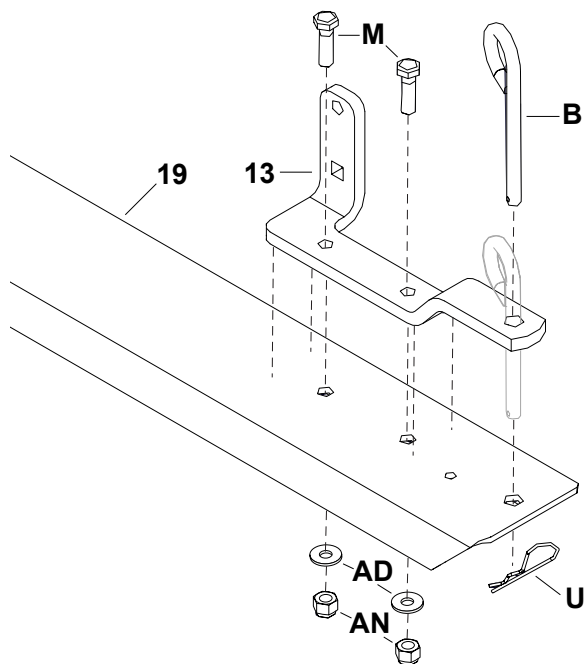


FIGURE 1

- Install the handle grip (AT) onto the stand handle bracket (14) as shown below.
- Install a 3/8" x 1-1/4" carriage bolt (N) through the bottom square hole on the hitch stand bracket (13).
- Install a 1-1/8" washer (AB) onto the 3/8" x 1-1/4" carriage bolt (N) followed by a 17/64" long spacer (AJ).
- Place the stand handle bracket (14) onto the 3/8" x 1-1/4" carriage bolt (N). Make sure the spacer (AJ) sits in the round hole on the stand handle bracket (14).
- Secure with a 7/8" washer (AD) and a 3/8" nylock nut (AN). Do not fully tighten hardware. See figure 2.

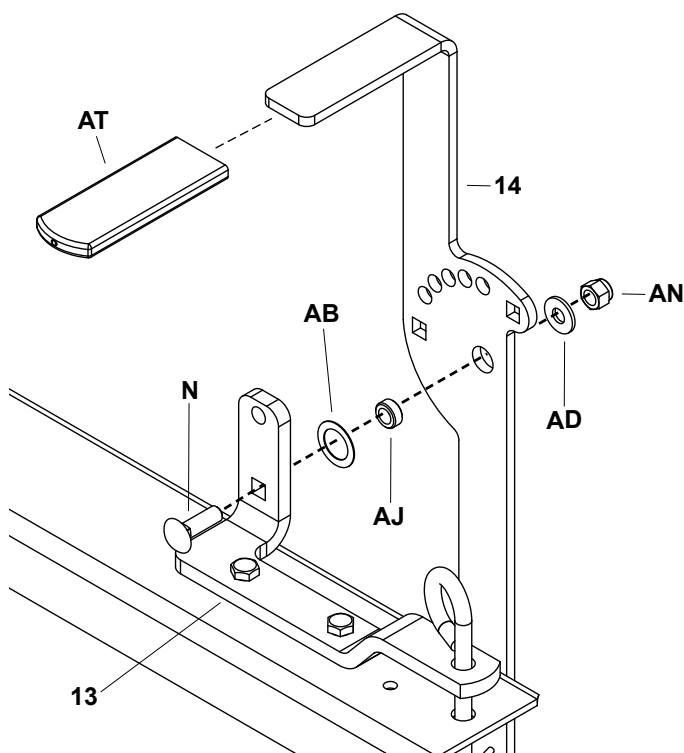
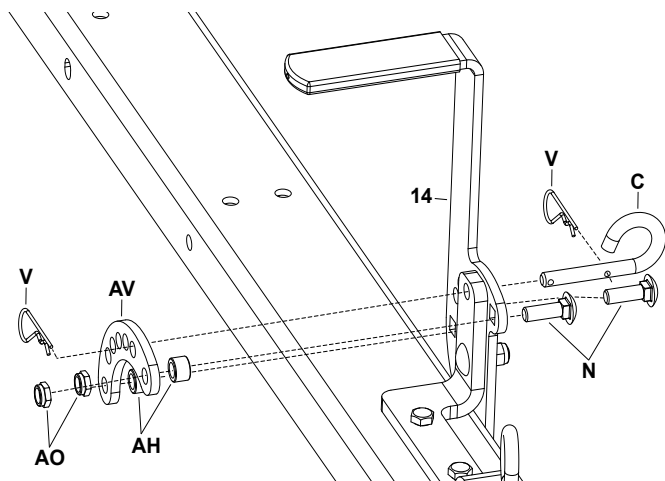


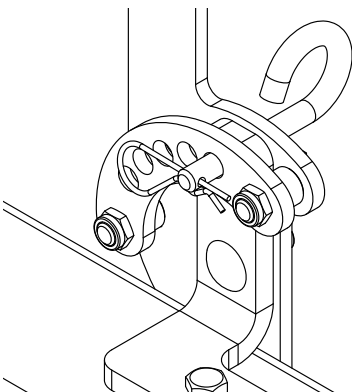
FIGURE 2

- Install a 3/32" x 2-5/16" hair cotter pin (V) into the upper hole of the 3/8" x 1-1/2" pivot lock pin (C).
- Then install the 3/8" x 1-1/2" pivot lock pin (C) into the first round hole on the front of the stand handle bracket (14) and then through the hitch stand bracket (13).
- Install the stand stop plate (AV) onto the 3/8" x 1-1/2" pivot lock pin (C) as shown below. Secure with a 3/32" x 2-5/16" hair cotter pin (V).
- Install a 3/8" x 1-1/4" carriage bolt (N) into the forward square hole of the stand handle bracket (14) and install a 7/16" long spacer (AH) onto the bolt between the stand handle bracket (14) and the stand stop plate (AV).
- Secure with a 3/8" jam nylock nut (AO).
- Repeat bullet points 3-5 using the rear square hole on the stand handle bracket (14).
- Tighten all hardware from Figures 2 and Figure 3. See figure 3.



**FIGURE 3**

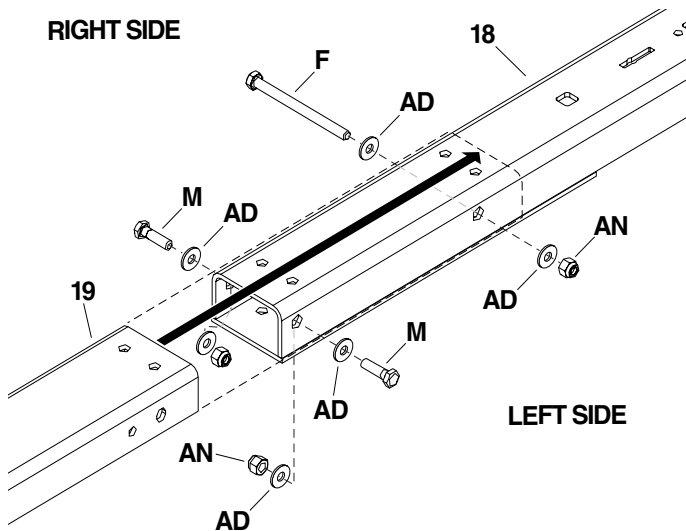
- Figure 3A shows what Figure 2 and Figure 3 looks like after assembled.



**FIGURE 3A**

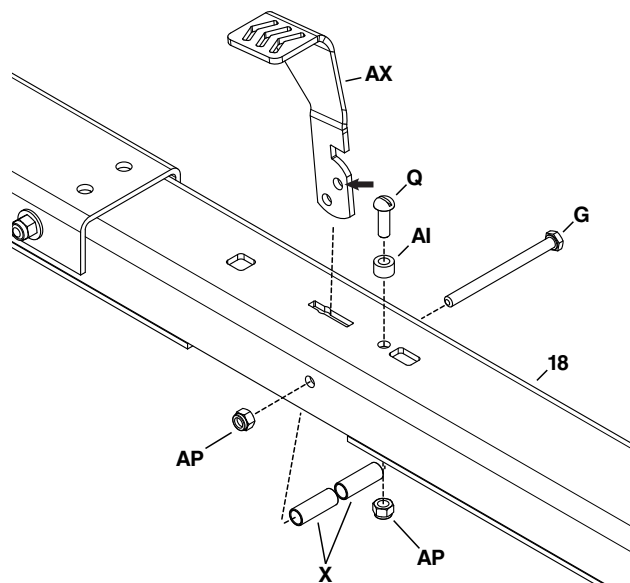
- Place the front tongue assembly (19) over the rear tongue assembly (18). Lining up the two forward side holes and the top four holes as shown below.
- Install a 3/8" x 4-1/2" hex bolt (F) and a 7/8" washer (AD) through the second hole, from the right side through front and rear tongue assemblies to the left side as shown below.
- Secure with a 7/8" washer (AD) and a 3/8" nylock nut (AN). Do not fully tighten hardware.

- Install a 3/8" x 1-1/4" bolt (M) and a 7/8" washer (AD) through the first hole from the right side through front and rear tongue assemblies as shown below.
- Secure with a 7/8" washer (AD) and a 3/8" nylock nut (AN) on the inside of the rear tongue assembly channel (18).
- Repeat on the left side forward hole.
- Tighten hardware. See figure 4.



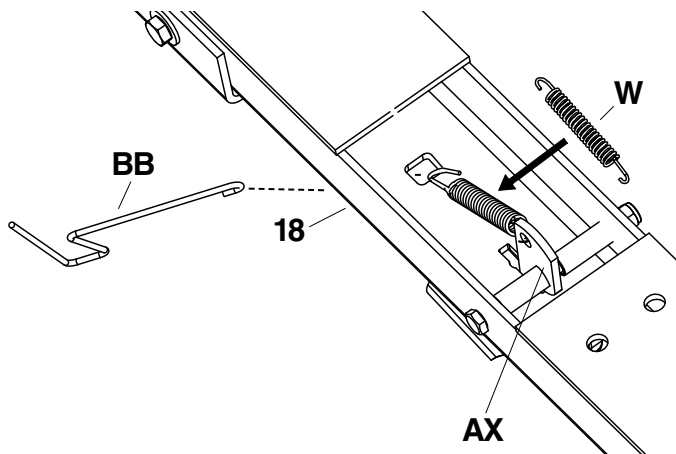
**FIGURE 4**

- Install the foot pedal latch (AX) into the rear tongue assembly (18). Make sure the notch is facing rearward as shown below.
- Install a 5/16" x 4" bolt (G) from the right side through the rear tongue assembly (18), a 1-13/32" long spacer (X), foot pedal latch (AX) (using the upper rear hole shown below with arrow pointing at it), another 1-13/32" long spacer (X), left side of the rear tongue assembly (18).
- Secure with a 5/16" nylock nut (AP). Tighten hardware but make sure the foot pedal latch (AX) can still move freely.
- Install a 5/16"x 1" slot screw (Q) and 23/64" long spacer (AI) into small hole behind latch on the rear tongue assembly as shown below.
- Secure with a 5/16" nylock nut (AP). Tighten hardware. See figure 5.



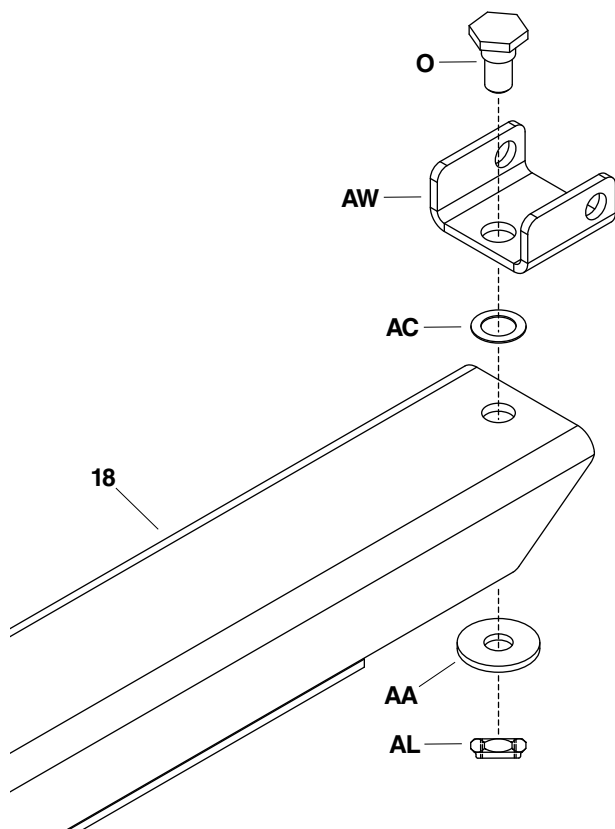
**FIGURE 5**

- Flip over the tongue assembly (18).
- Install the smaller end of the extension spring (W) onto the open hole on the foot pedal latch (AX).
- Install the spring puller (BB) into the square from underneath.
- Hook the spring puller (BB) onto the other end of the extension spring (W) and pull to latch the spring (W) to the square hole. Remove the spring puller (BB) then.



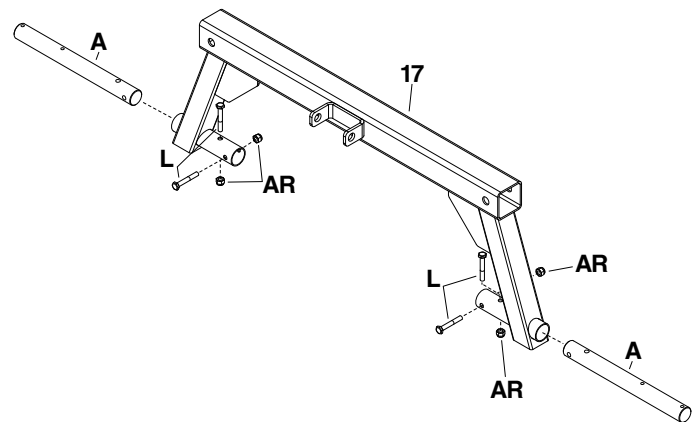
**FIGURE 6**

- Flip the tongue assembly (18) back over.
- Install a 1/2" x 1-1/8" bolt (O) through the pivot clevis (AW), 1" washer (AC), and the rear tongue assembly (18).
- Install a 1-1/2" washer (AA) and a 1/2" jam nut (AL) onto the 1/2" x 1-1/8" bolt (O) on the bottom side of the rear tongue assembly (18).
- Tighten hardware but make sure the pivot clevis can still move freely. See figure 7.



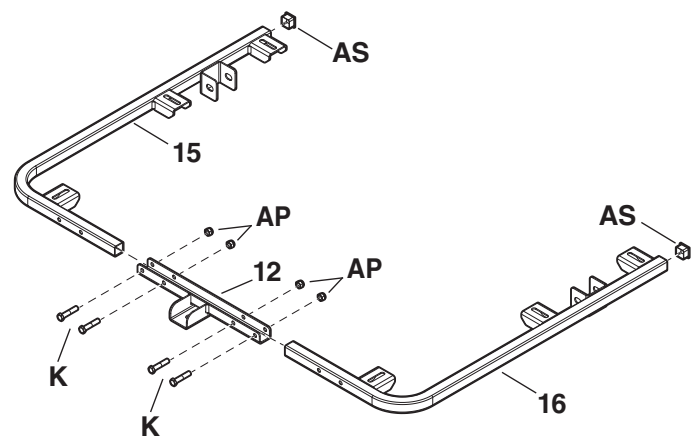
**FIGURE 7**

- Position the axle frame assembly (17) as shown below.
- Install an axle (A) into the axle frame assembly (17) lining up the vertical and horizontal holes.
- Install a 1/4" x 1-3/4" bolt (L) into the vertical and horizontal holes.
- Secure each bolt (L) with a 1/4" nylock nut (AR). Tighten hardware.
- Repeat on the other side.



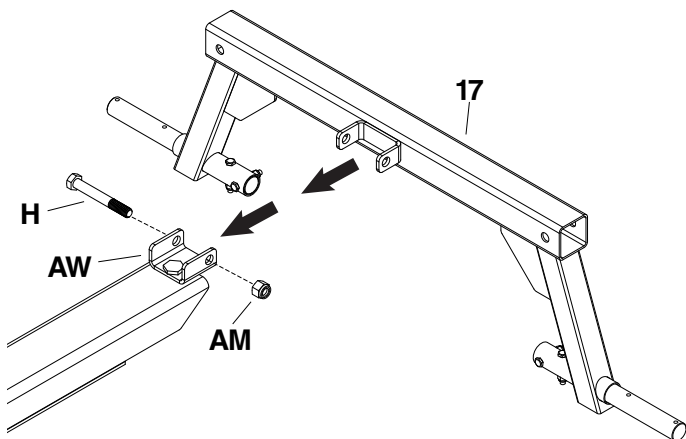
**FIGURE 8**

- Insert a square plug (AS) into the long end of the LH frame (16) and the RH frame (15) as shown below.
- Position the LH Frame (16) and RH Frame (15) as shown below.
- Place both frame assemblies into the latch weldment assembly (12) lining up the two holes on each frame assembly. The latch weldment assembly (12) needs to be facing as shown below.
- Install two 5/16" x 1-3/4" bolts (K) from the front through the assemblies on both sides.
- Secure with two 5/16" nylock nuts (AP) on each side. Tighten hardware. See figure 9.



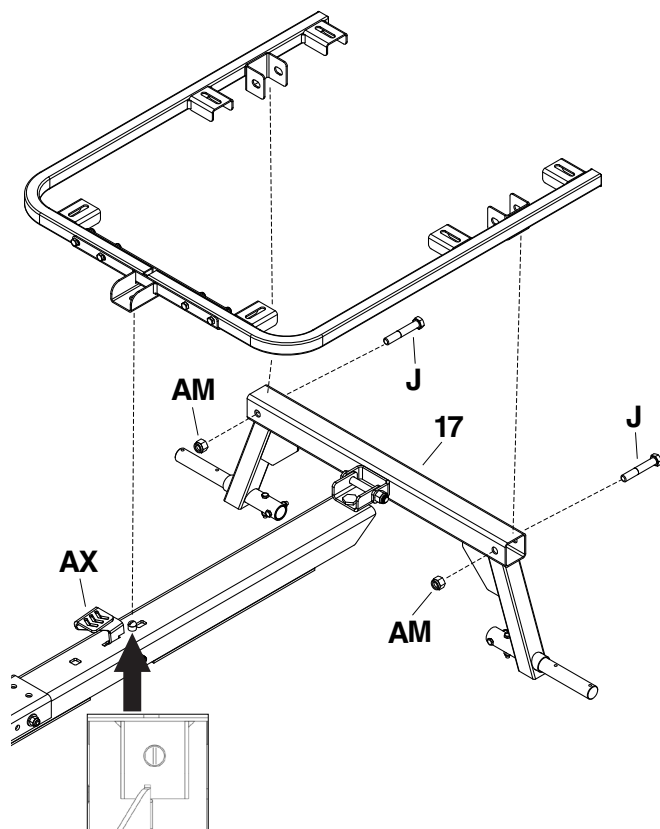
**FIGURE 9**

- Place the U-bracket on the axle frame assembly (17) around the pivot clevis (AW) and line up the holes.
- Insert a 1/2" x 3-3/4" bolt (H) from the right side through the axle frame assembly (17) and pivot clevis (AW).
- Secure with a 1/2" nylock nut (AM). Tighten hardware but make sure it can still pivot. See figure 10.



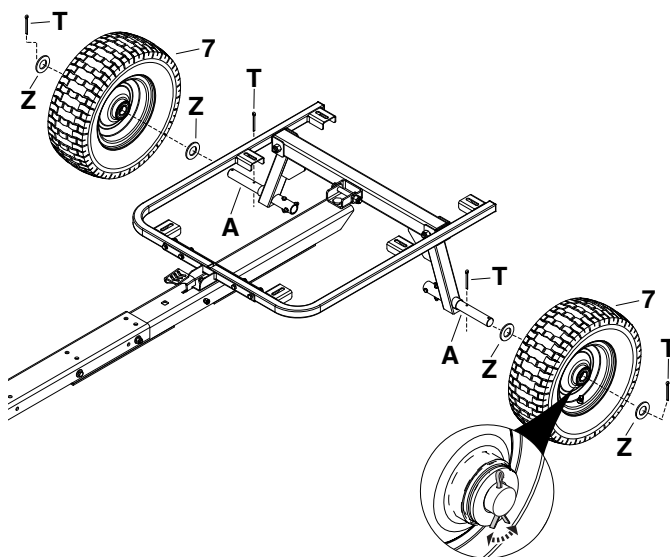
**FIGURE 10**

- Install the frame assembly onto the rear tongue (18) and axle frame assembly (17) as shown below.
- Press down on the foot pedal latch (AX) to allow the front bracket on the frame assembly to sit around the screw (Q). Release the foot pedal latch (AX).
- Install a 1/2" x 3" bolt (J) through the frame assembly and axle frame assembly (17) from the rear. Repeat on the other side.
- Secure both bolts with a 1/2" nylock nut (AM). Tighten hardware. See figure 11.



**FIGURE 11**

- Install a 3/16" x 2" cotter pin (T) into the inner hole of the axle (A) (Hole nearest the frame). Split the ends of the cotter pin. Repeat on the other side.
- Install a 2" washer (Z) onto the axle (A) up against the cotter pin just installed on each side.
- Install the wheel & tire assembly (7) on the axle (A). Making sure the valve stem is facing outwards. Repeat on other side.
- Install a 2" washer (Z) onto the axle (A) up against the wheel & tire assembly (7) just installed on each side.
- Install a 3/16" x 2" cotter pin (T) into the outer hole of the axle (A). Split the ends of the cotter pin. Repeat on the other side. See figure 12.

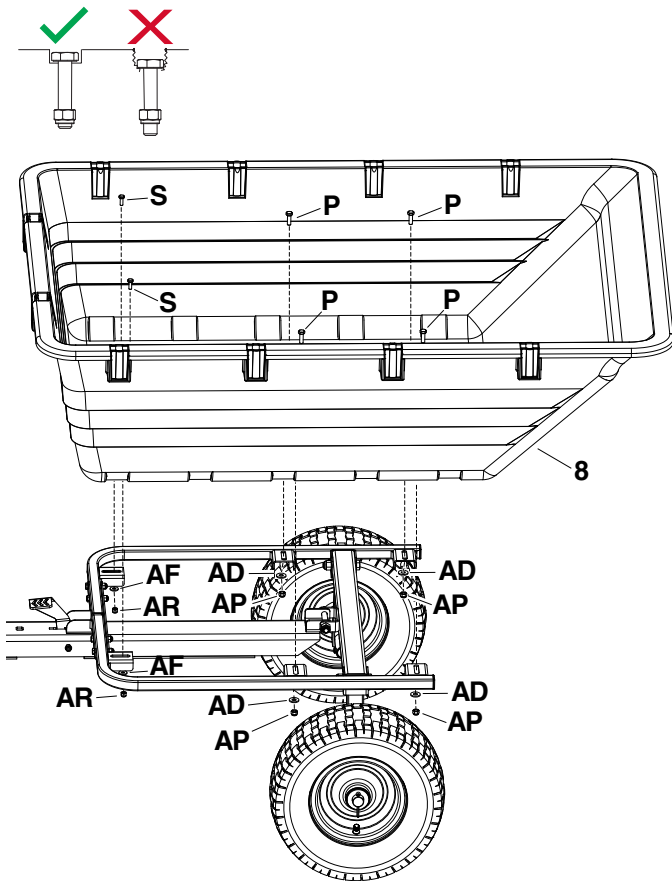


**FIGURE 12**

- Place the poly bed (8) as shown below onto the cart frame.
- Install two 1/4" x 3/4" bolt (S) into the front two holes on the poly bed (8) and through the slotted brackets on the cart frame.
- Install two 5/16" x 1" bolts (P) into rear outside holes on the right side of the poly bed (8) and through the slotted brackets on the cart frame. Repeat on the left side.
- Install one 47/64" washer (AF) onto each of the front two bolts (S) and secure them with one 1/4" nylock nut (AR) each. Do not tighten hardware yet.
- Install one 7/8" washer (AD) onto each of the right rear bolts (P) and secure them with one 5/16" nylock nut (AP) each. Repeat on left side but do not tighten hardware.

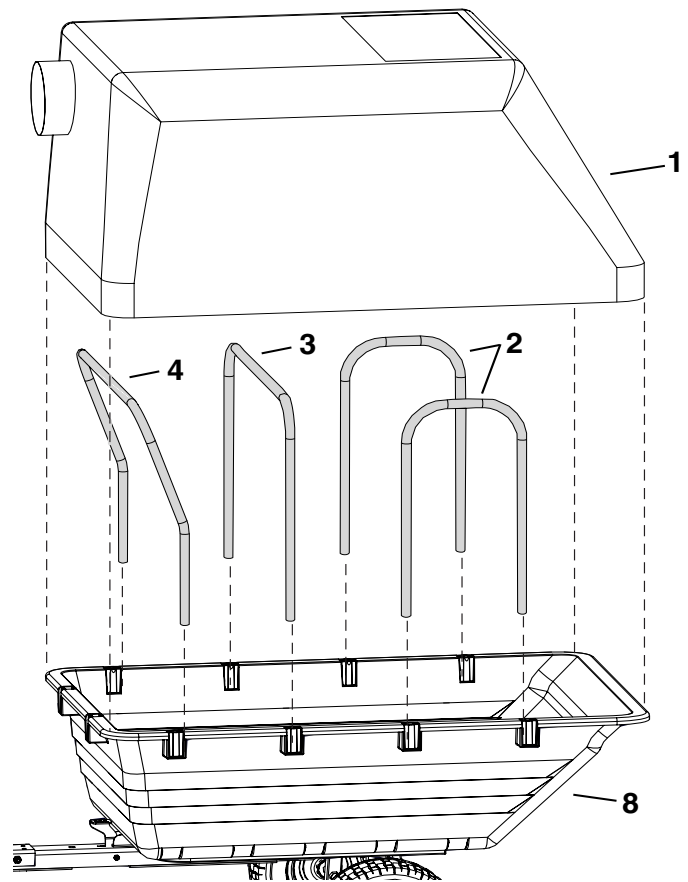
**NOTE: Do not overtighten the bolts going into the poly bed as it can cause damage!**

- Tighten all 6 bolts but be careful not to overtighten. Image below shows how the bolts will look like when tightened. See figure 13.



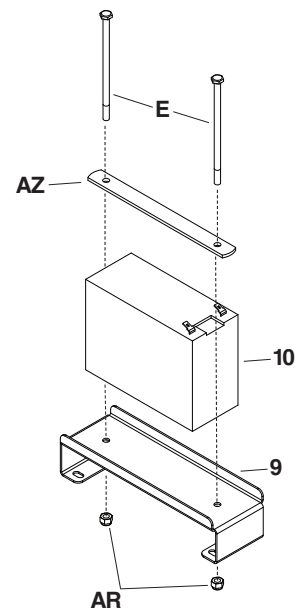
**FIGURE 13**

- Insert the small hopper tube (2) into the rear two slots on the poly bed (8). Repeat on other side.
- Insert the hopper tube (3) across the poly bed (8) as shown in the slots forward of the small hopper tube (2) slots.
- Insert the angled hopper tube (4) into the front slots making sure the angled portion is facing forward.
- Install the cover (1) on top of the poly bed (8). Making sure the part of the cover with the round hole is facing forwards. Tighten drawstring on cover. See figure 14.



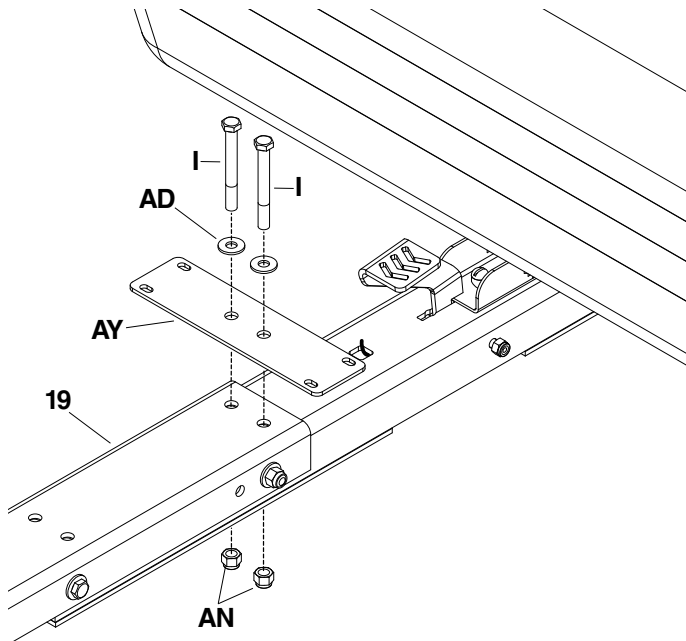
**FIGURE 14**

- Place the 12V battery (10) on the battery box bracket (9) as shown below. Battery (10) will sit between the two holes on the battery box bracket (9).
- Install two 1/4" x 5" bolts (E) through the battery hold down strap (AZ) and guide the bolts (E) down the sides of the battery (10) and through the battery box bracket (9) holes.
- Secure the bolts (E) from under the battery box bracket (9) with a 1/4" nylock nut (AR) each. Tighten hardware but do not overtighten. See figure 15.



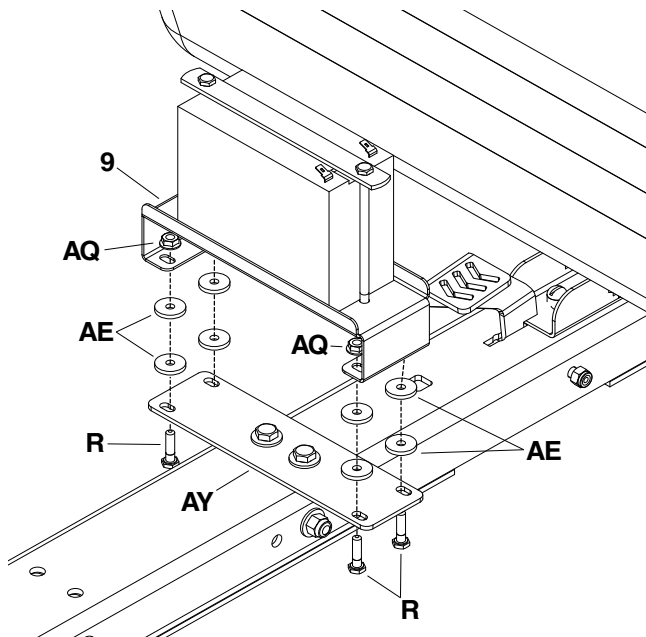
**FIGURE 15**

- Place the battery box bracket strap (AY) over the rear most holes on the front tongue assembly (19).
- Install a 7/8" washer (AD) onto a 3/8" x 3-1/4" bolt (I) and install into the hole on the battery box bracket strap (AY). Repeat on other hole.
- Secure each 3/8" x 3-1/4" bolt (I) with a 3/8" nylock nut (AN). Tighten hardware. See figure 16.



**FIGURE 16**

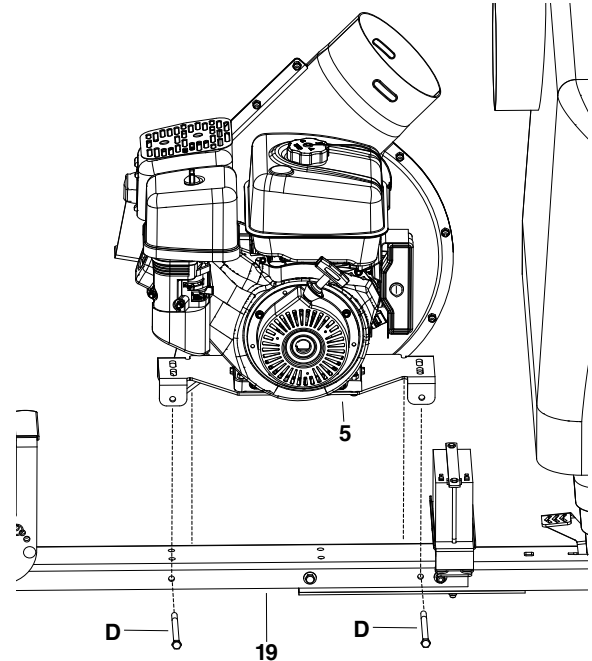
- Place two 7/8" rubber washers (AE) centered over each of the 4 holes on the battery box bracket strap (AY).
- Place the battery box bracket (9) on top of the 7/8" rubber washers (AE).
- Install a 1/4" x 1" bolt (R) through each hole from the bottom of the battery box bracket strap (AY) through the 7/8" rubber washers (AE) and the battery box bracket (9).
- Secure each bolt (R) with a 1/4" lock nut (AQ). Tighten hardware. See figure 17.



**FIGURE 17**

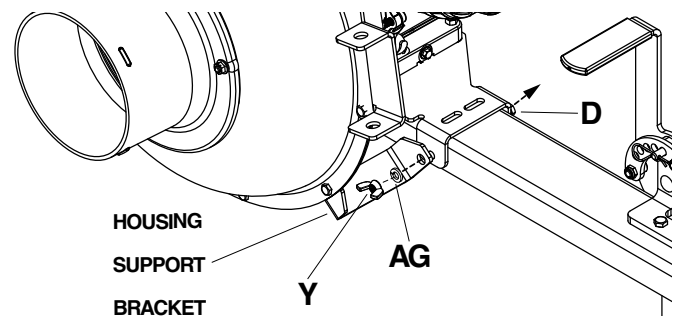
**NOTE: We recommend two individuals for the next step.**

- Place the engine assembly (5) onto the front tongue assembly (19) as shown below lining up the holes. Making sure the ignition switch is on the left side.
- Install a 3/8" x 5-1/4" bolt (D) in the rear hole from the left side through the engine assembly (5) and front tongue assembly (19).
- Partially install a 3/8" x 5-1/4" bolt (D) in the front hole from the left side through the engine assembly (5). See figure 18.



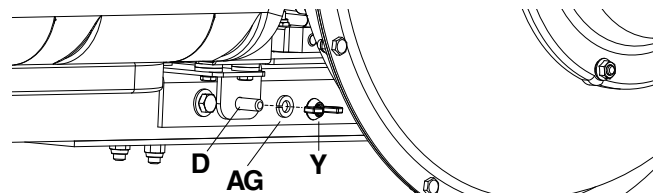
**FIGURE 18**

- Push in the 3/8" x 5-1/4" bolt (D) that was partially installed through the other side of the engine assembly (5) and the housing support bracket.
- Secure with a 47/64" lock washer (AG) and 3/8" wing nut (Y). Tighten hardware. See figure 19A.



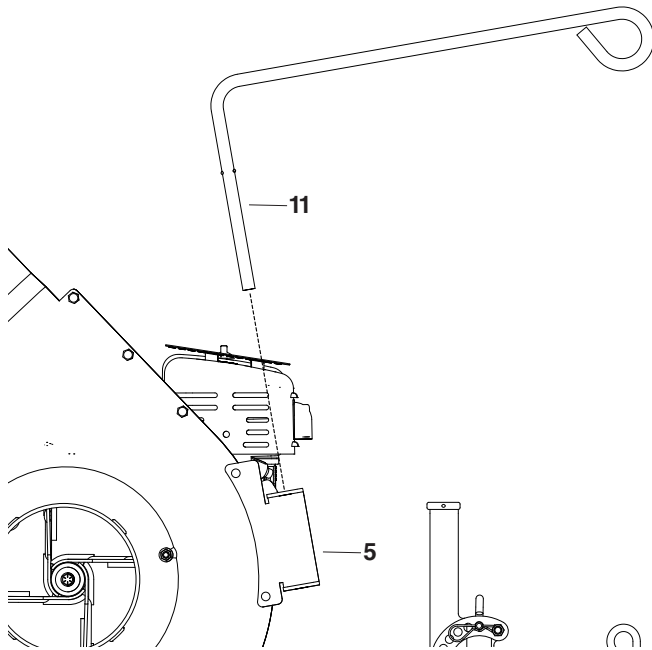
**FIGURE 19A**

- Secure the rear 3/8" x 5-1/4" bolt (D) with a 47/64" lock washer (AG) and 3/8" wing nut (Y). Tighten hardware. See figure 19B.



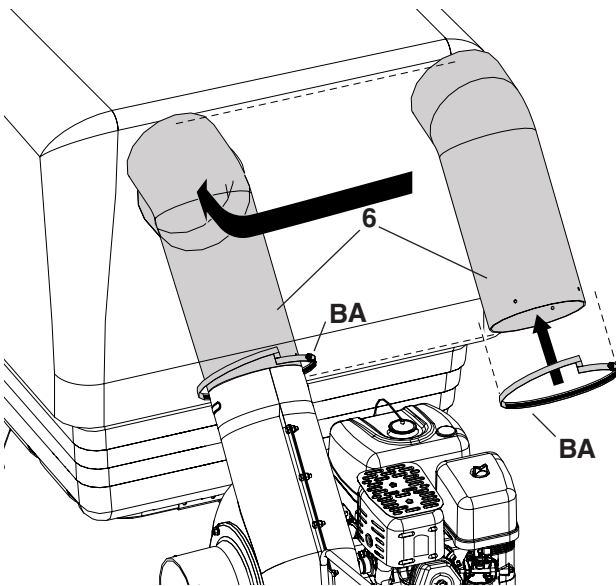
**FIGURE 19B**

- Slide the hose hanger rod (11) into the bracket on the engine assembly (5) as shown below. See figure 20.



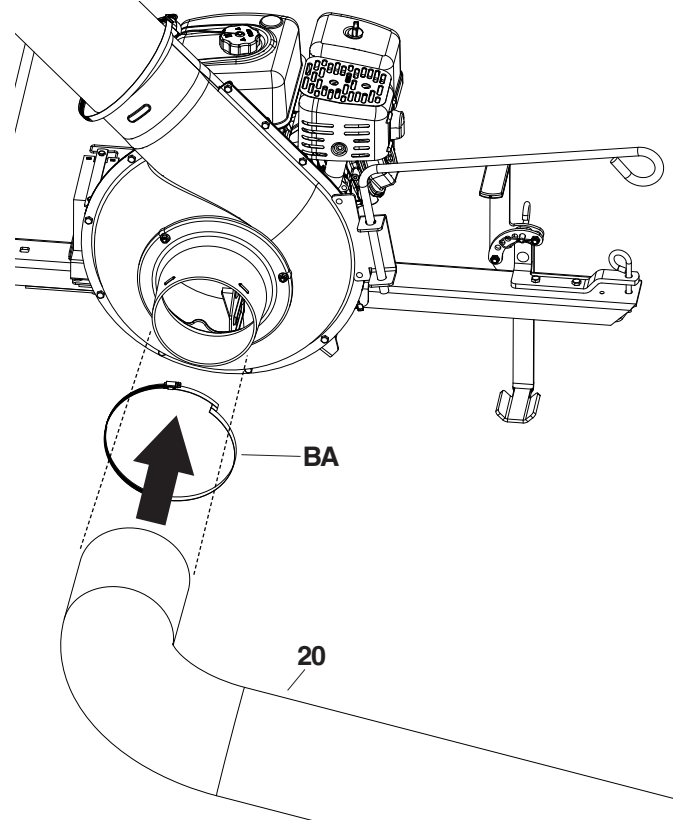
**FIGURE 20**

- Push the curved end of the 8" hose (engine to bed) (6) into the cover (1) and pull the cover's drawstring to secure in place. Place a 8" hose clamp (BA) onto the straight end of the small hose (6). Push the 8" hose (engine to bed) (6) onto the impeller housing and tighten the 8" hose clamp (BA). Do not collapse the hose when tightening the clamp. See figure 21.



**FIGURE 21**

- Place a 8" hose clamp (BA) onto the end of the 8" hose (deck to engine) (20). Install the hose onto the 8" hose adapter. Tighten the 8" hose clamp (BA) onto the hose and hose adapter. Do not collapse the hose when tightening the clamp. See figure 22.



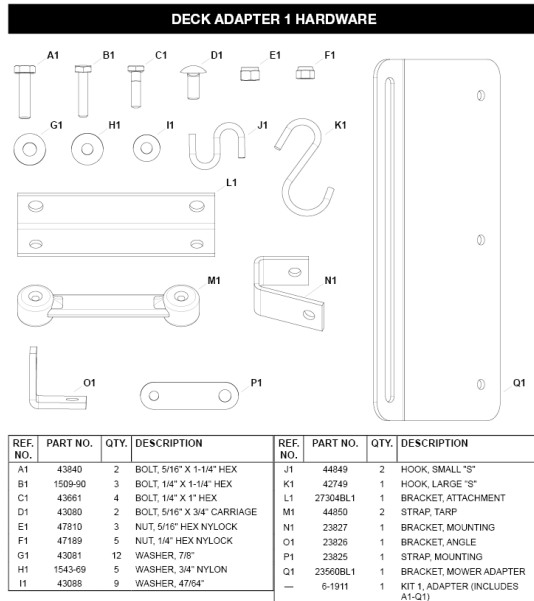
**FIGURE 22**

- Turn the hose hanger rod (11) so it is positioned over the 8" hose (deck to engine) (20).
- Install a 25" tarp strap (AU) onto the hose hanger rod (11) and then connect the other end of the tarp strap to the second 25" tarp strap (AU).
- Wrap the tarp straps (AU) around the hose (20) and install the tarp strap (AU) to the hose hanger rod (11). (This will help support the hose going into the impeller housing.)
- Install the red wire from the engine to the batteries positive connection. Then install the black wire from the engine to the batteries negative connection.

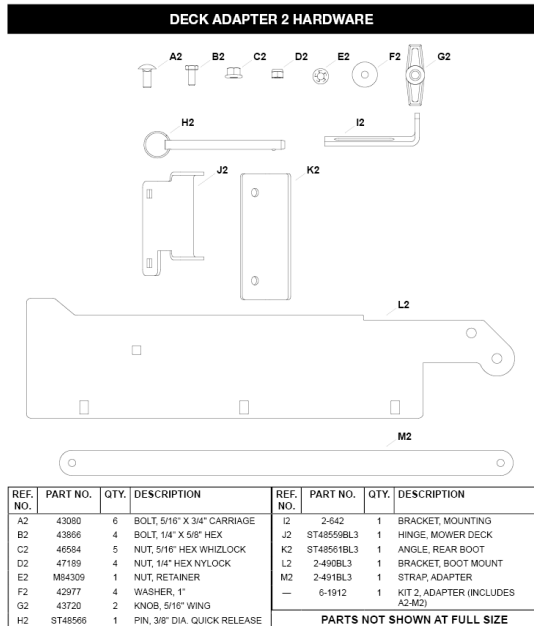
# DECK ADAPTER INSTALLATION

## DECK ADAPTER DIFFERENCES

- Deck adapter kit 1 (Pg 16 for parts list) is generally used on deck sizes of 54" and smaller. Depending on deck style. Use instructions starting on this page.



- Deck adapter kit 2 (Pg 17 for parts list) is generally used on deck sizes of 60" and larger. Depending on deck style. Use instructions starting on page 25..



## ASSEMBLING THE DECK ADAPTER 1 TO THE MOWER DECK

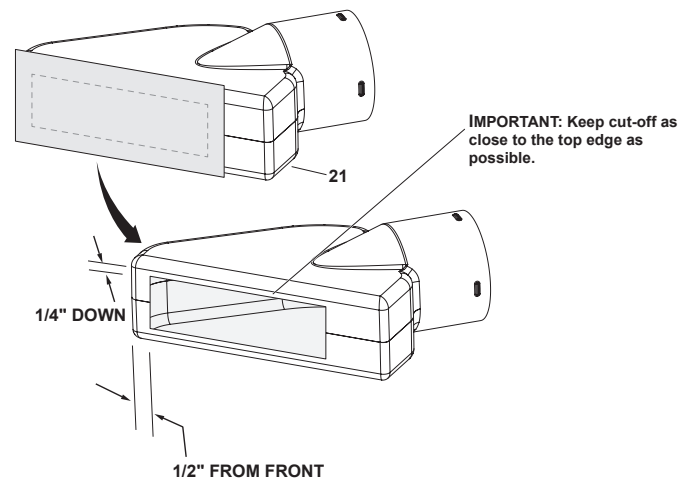
**NOTE:** Not all of the parts in the deck adapter hardware package will be needed for your particular fit up. Additional brackets in adapter kit 1 can be used to assist in installation onto mower decks with unique shape openings.

- Remove the mower discharge deflector from your mower deck. Save the deflector and hardware for remounting deflector.



**WARNING:** Mower deflector must be replaced when the deck adapter is removed. Do Not operate mower unless adapter or deflector is in place and properly mounted.

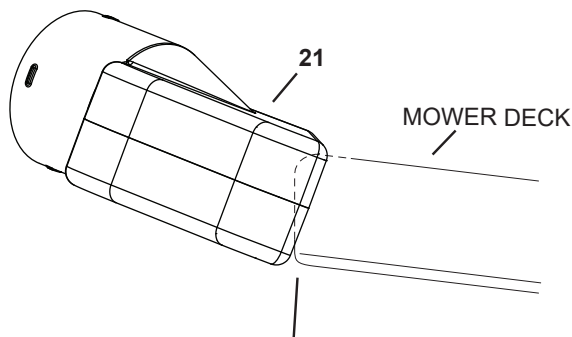
- Create a template by marking around a piece of cardboard held against the edge of the deck's discharge opening.
- Tape the template to the face of the deck adapter (21), about 1/2" from front and 1/4" down from top for deeper decks. For shallow decks, position template low enough that adapter will not extend below bottom of deck. Mark outline of template on face of adapter using white crayon, nail or scribe.
- Drill a starting hole inside the outline, then use a saber saw or key hole saw to cut out the opening. See figure 23.



**FIGURE 23**

- Position the adapter (21) over the deck opening, and check for fit of cutout as shown in figure 21. Trim cutout, if necessary, to allow tilting of adapter, keeping the fit as close as possible for best vacuum suction. See figure 24.

NOTE: Make sure adapter clears gauge wheels on mower deck



Curl on deck may be located outside of adapter or inside depending on deck opening design

FIGURE 24

- Holding the adapter bracket (Q1) and the deck adapter (21) together, position the deck adapter on the mower deck. Keeping the edge of deck adapter as close as possible to the offset in the adapter bracket, see if the slot in the adapter bracket can be aligned with one or two of the deflector holes in your mower deck's discharge opening. If the bracket can not be located correctly using existing holes, it will be necessary to drill one or two 5/16" diameter holes in the deck. See figure 25.

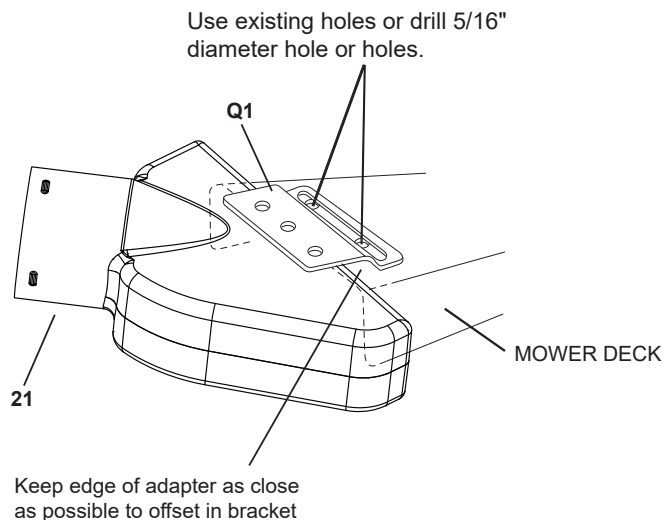


FIGURE 25

- Assemble the adapter bracket to the deck using two 5/16" x 1-1/4" hex bolts (A1), 7/8" flat washers (G1) and 5/16" nylock nuts (E1). Tighten hardware. See figure 26.

**NOTE:** It may be necessary to use extra 7/8" flat washers (G1) to shim under the bracket next to the deck surface. Ten extra washers have been furnished as shims. See figure 26.

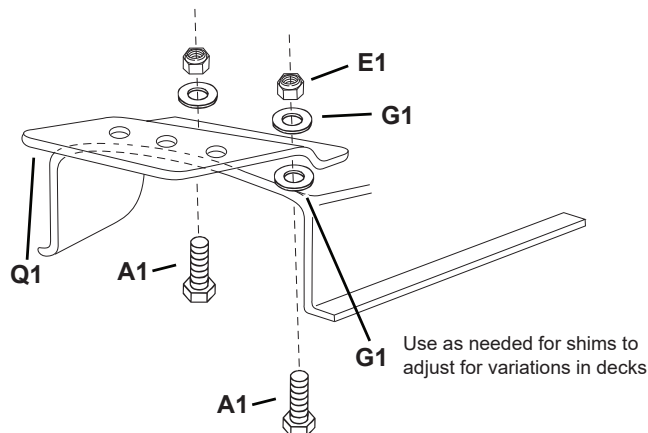


FIGURE 26

- With deck adapter positioned correctly over the discharge opening, use the adapter bracket (Q1) as a template and drill three 9/32" diameter holes in the top of the deck adapter. See figure 27.
- Bolt deck adapter (21) to bracket (Q1) using three 1/4" x 1" bolts (C1), 3/4" nylon washers (H1), 47/64" flat washers (I1) and 1/4" nylock nuts (F1). Nylon washers (H1) should be against the inside of the deck adapter. Tighten hardware. See figure 27.

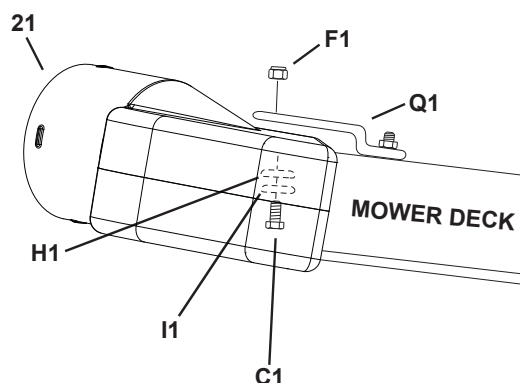


FIGURE 27

- GO DIRECTLY TO THE OPERATION INSTRUCTIONS ON PAGE 29.**

## ASSEMBLING THE DECK ADAPTER 2 TO THE MOWER DECK

- Position deck adapter (21) against mower deck opening. Position deck hinge (J2) towards the front of the deck adapter as shown to determine placement of the hinge.
- If no holes are present on mower deck to attach the deck hinge (J2), use the deck hinge (J2) to mark where holes are needed. Drill holes using a 5/16" drill bit.
- Attach deck hinge using two 5/16" x 3/4" carriage bolts (A2) and 5/16" whizlock nuts (C2). See figure 28.

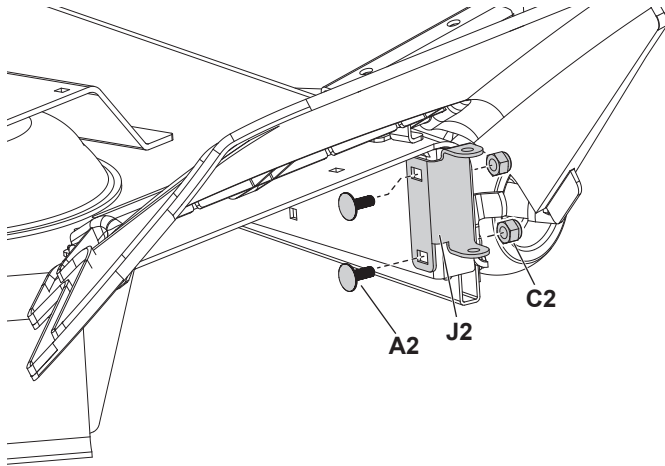


FIGURE 28

- Create a template by marking around a piece of cardboard held against the edge of the deck's discharge opening.
- Tape the template to the face of the deck adapter (21), about 1/2" from front and 1/4" down from top for deeper decks. For shallow decks, position template low enough that adapter will not extend below bottom of deck. Mark outline of template on face of adapter using white crayon, nail or scribe.
- Drill a starting hole inside the outline, then use a saber saw or key hole saw to cut out the opening. See figure 29

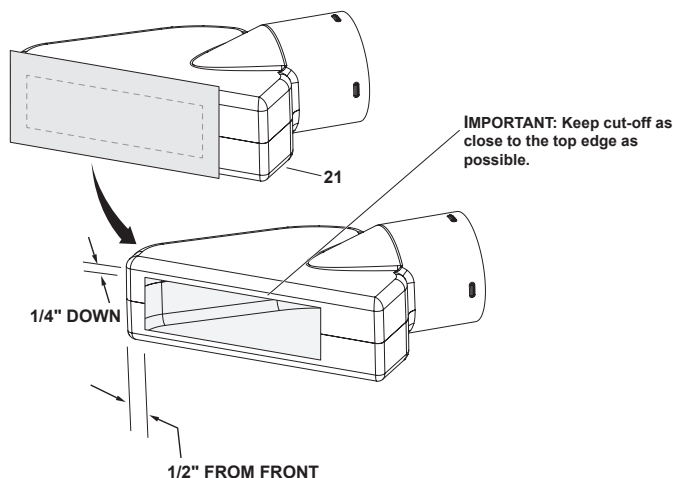


FIGURE 29

- Position deck adapter (21) so that the top lip of the deck hinge (J2) is on top of the adapter (21) while the bottom lip is inside the adapter (21).
- Position boot mount bracket (L2) over top lip of the deck hinge (J2) and insert 3/8" quick release pin (H2).
- Position boot mount bracket (L2) in place on the deck adapter (21) and mark holes for drilling. Drill holes in deck adapter for attaching boot mount bracket.
- Place a 5/16" x 3/4" carriage bolt (A2) through the deck adapter (21) and boot mount bracket (L2). Install a retainer nut (E2) using a 7/16" socket to push the retainer nut (E2) onto the 5/16" carriage bolt (A2).
- Attach boot mount bracket (L2) to deck adapter (21) using three 5/16" carriage bolts (A2) and 5/16" whizlock nuts (C2). Tighten hardware but be careful not to overtighten. See figure 30.

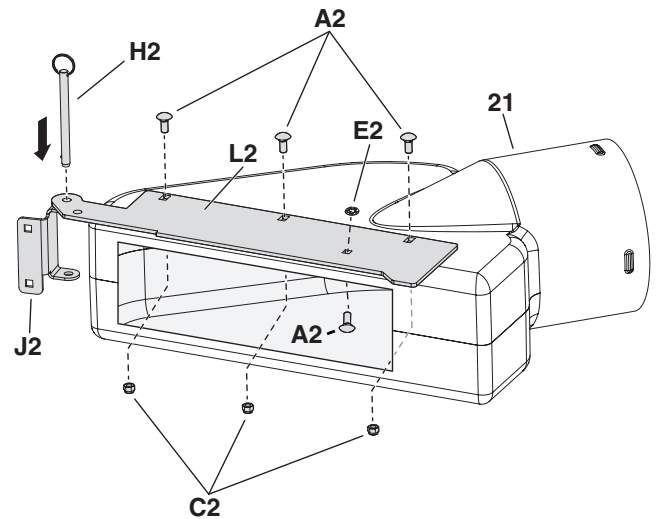


FIGURE 30

- Place adapter strap (M2) inside deck adapter (21) as shown. Mark and drill holes. Attach using two 1/4" x 5/8" bolts (B2), 1" washers (F2), and 1/4" nylock nuts (D2). See figure 31.

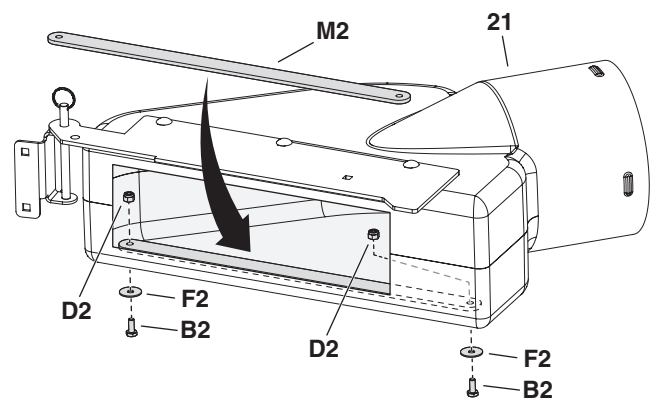
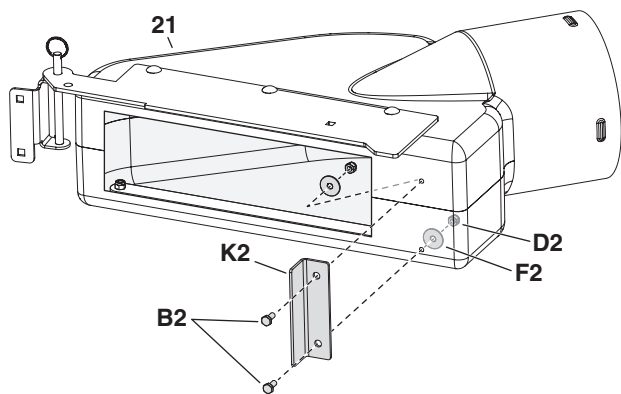


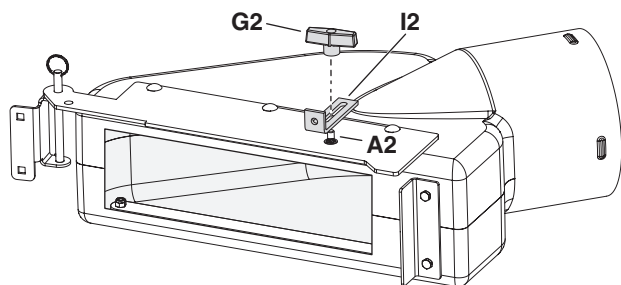
FIGURE 31

- Use of the boot rear angle (K2) is dependant on the size of the mower deck opening. If mower deck opening is too large, skip this step. Position boot rear angle (K2) and deck adapter (21) so that boot rear angle (K2) is at the rear edge of the mower deck opening. Mark holes on the deck adapter (21) and drill. Attach boot rear angle (K2) using two 1/4" x 5/8" bolts (B2), 1" washers (F2) and 1/4" nylock nuts (D2). See figure 32.



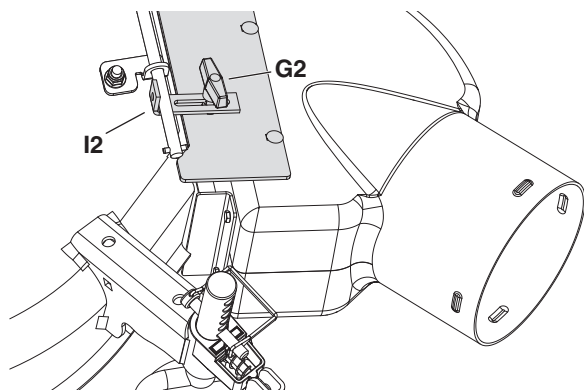
**FIGURE 32**

- Install the mounting bracket (I2) onto the 5/16" x 3/4" carriage bolt (A2) as shown below. Then install the 5/16" wing knob (G2) but do not fully tighten. See figure 33.



**FIGURE 33**

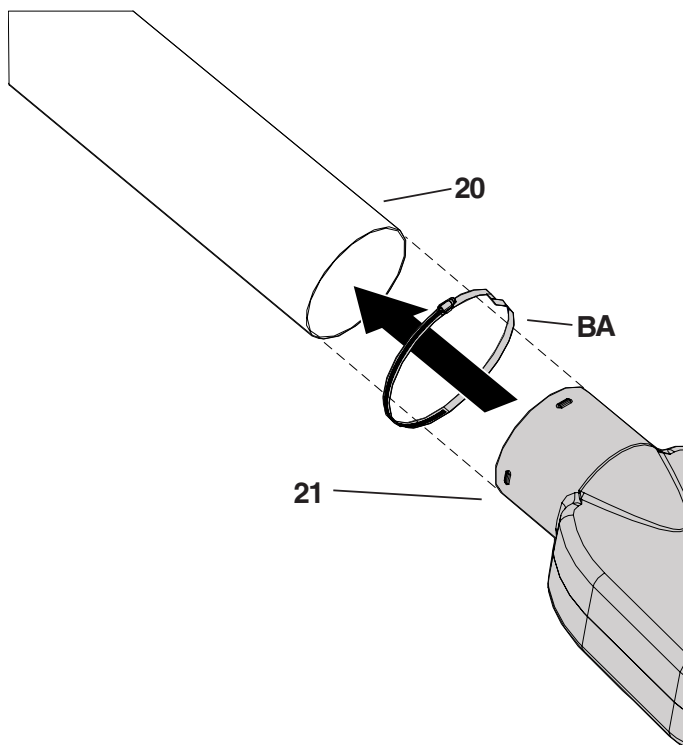
- With boot against mower deck, slide mounting bracket (I2) under axle of discharge chute. Tighten the 5/16" wing knob (G2). See figure 34.



**FIGURE 34**

## HOSE INSTALL TO DECK ADAPTER

- Place a 8" hose clamp (BA) onto the open end of the 8" hose (deck to engine) (20). Install the hose onto the installed deck adapter (21). Tighten the 8" hose clamp (BA) onto the hose (20) and deck adapter (21). Do not collapse the hose when tightening the clamp. See figure 35.



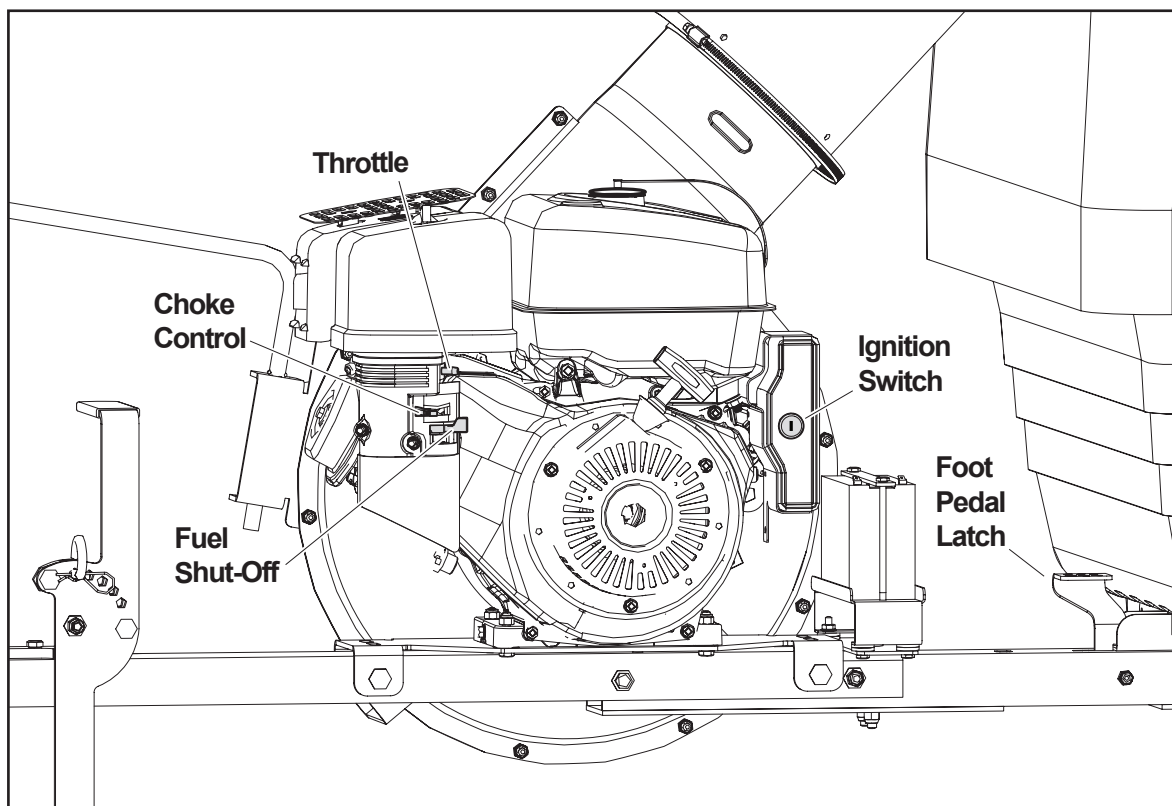
**FIGURE 35**

## OPERATION

### KNOW YOUR 42 CU FT LAWN VAC

Read this owner's manual and safety rules before operating your 42 cu ft Lawn Vac.

Compare the illustration below with your 42 cu ft Lawn Vac to familiarize yourself with the various controls and their locations.



**THROTTLE CONTROL** Controls speed of engine.

**CHOKE CONTROL** Adjust to allow cold starting.

**FUEL SHUT-OFF** Shuts off fuel flow to engine.

**IGNITION SWITCH** Turns on/off engine ignition with key.

**FOOT PEDAL LATCH** Locks the cart bed down to the tongue. Releases to allow cart to be tipped back for dumping.



**CAUTION:** Alcohol blended fuels (called gasohol or using ethanol or methanol) can attract moisture which leads to separation and formation of acids during storage. Acidic gas can damage the fuel system of an engine while in storage. To avoid engine problems, the fuel system should be emptied before storage for 30 days or longer. Drain the gas tank, start the engine and let it run until the fuel lines and carburetor are empty. Use fresh fuel next season.

See STORAGE Instructions for additional information.

Never use engine or carburetor cleaner products in the fuel tank or permanent damage may occur.



**WARNING:** Never fill fuel tank indoors, or with the engine running, or while the engine is hot. Do not smoke while filling tank.

### BEFORE STARTING

**FILL THE ENGINE WITH OIL!** Your engine is shipped without oil or gasoline. Add oil and gas as instructed in the separate engine manual located in Box 1 of 3.

- Inspect the 42 cu ft Lawn Vac to make sure all parts including the deck adapter are properly attached.
- Check tires for proper inflation.
- Verify the battery (10) is fully charged. If not use included battery charger (AK) to charge the battery (10).

## HOW TO START YOUR 42 CU FT LAWN VAC



**WARNING:** Never start or run the engine without all covers being properly attached to the blower housing and cart.



**WARNING:** Do not place hands on or near the exhaust system while starting.



**NOTE:** Make sure you are using hearing protection at all times while the engine is running.

- Check oil and gas in 42 cu ft Lawn Vac engine.
- Attach spark plug wire to the spark plug. (Only if it was removed for maintenance or storage.)
- Turn the fuel shut off lever to ON.
- Move choke lever on engine to CHOKE position. (A warm engine may not require choking.)
- Move throttle control lever on engine about 1/3 of the way towards the FAST position.
- Insert key into the ignition switch and turn ON.
- If the CHOKE lever was moved to start the engine, gradually move it to the RUN position as the engine warms up.

If battery is not operating, you can follow the steps below to start the engine.

- Check oil and gas in 42 cu ft Lawn Vac engine.
- Attach spark plug wire to spark plug.
- Turn the fuel shut off lever to ON.
- Move choke lever on engine to CHOKE position. (A warm engine may not require choking.)
- Move throttle control lever on engine about 1/3 of the way towards the FAST position.
- Insert key into the ignition switch and turn ON.
- Grasp starter handle and pull rope out slowly until engine reaches start of compression cycle (rope will pull slightly harder at this point). Let the rope rewind slowly.
- Pull rope with a rapid, continuous, full arm stroke. Keep a firm grip on starter handle. Let rope rewind slowly. Do not let starter handle snap back against starter.
- Repeat instructions in two preceding paragraphs until engine fires. When engine starts, move choke control gradually to RUN position.

## HOW TO USE YOUR 42 CU FT LAWN VAC



**CAUTION:** Vehicle braking and stability may be affected with the addition of an accessory or an attachment. Be aware of changing conditions on slopes.

- Inspect the 42 cu ft Lawn Vac to make sure the cover, hose adapter, hoses, and deck adapter are properly attached.
- Check tires for proper inflation.
- Check for oil and gas in 42 cu ft Lawn Vac engine.
- Begin operation at low speed, adjusting forward speed to match grass height and/or moisture condition to prevent clogging.
- Do not attempt to vacuum up any material other than vegetation found in a normal yard, such as light branches, leaves, twigs, etc.



**WARNING:** Should your 42 cu ft Lawn Vac become clogged, shut off tractor and 42 cu ft Lawn Vac engines. Before attempting to unclog, remove wire from spark plug to prevent accidental starting.

## HOW TO STOP YOUR 42 CU FT LAWN VAC

- To stop engine, move the throttle control lever to the OFF position.
- Turn the key OFF and remove the key.
- Disconnect spark plug wire from plug to prevent accidental starting while equipment is unattended or is being worked on.

## TO EMPTY THE CART

1. Shut off the tractor engine and set the brake.
2. Shut off the Vac engine.
3. Loosen draw string lock and pull the hose out of the cover.
4. Loosen the rear drawstring on the cover and pull up the cover from the rear of the cart and secure cover in upright position.
5. Release foot pedal latch on tongue and guide the cart bed down.

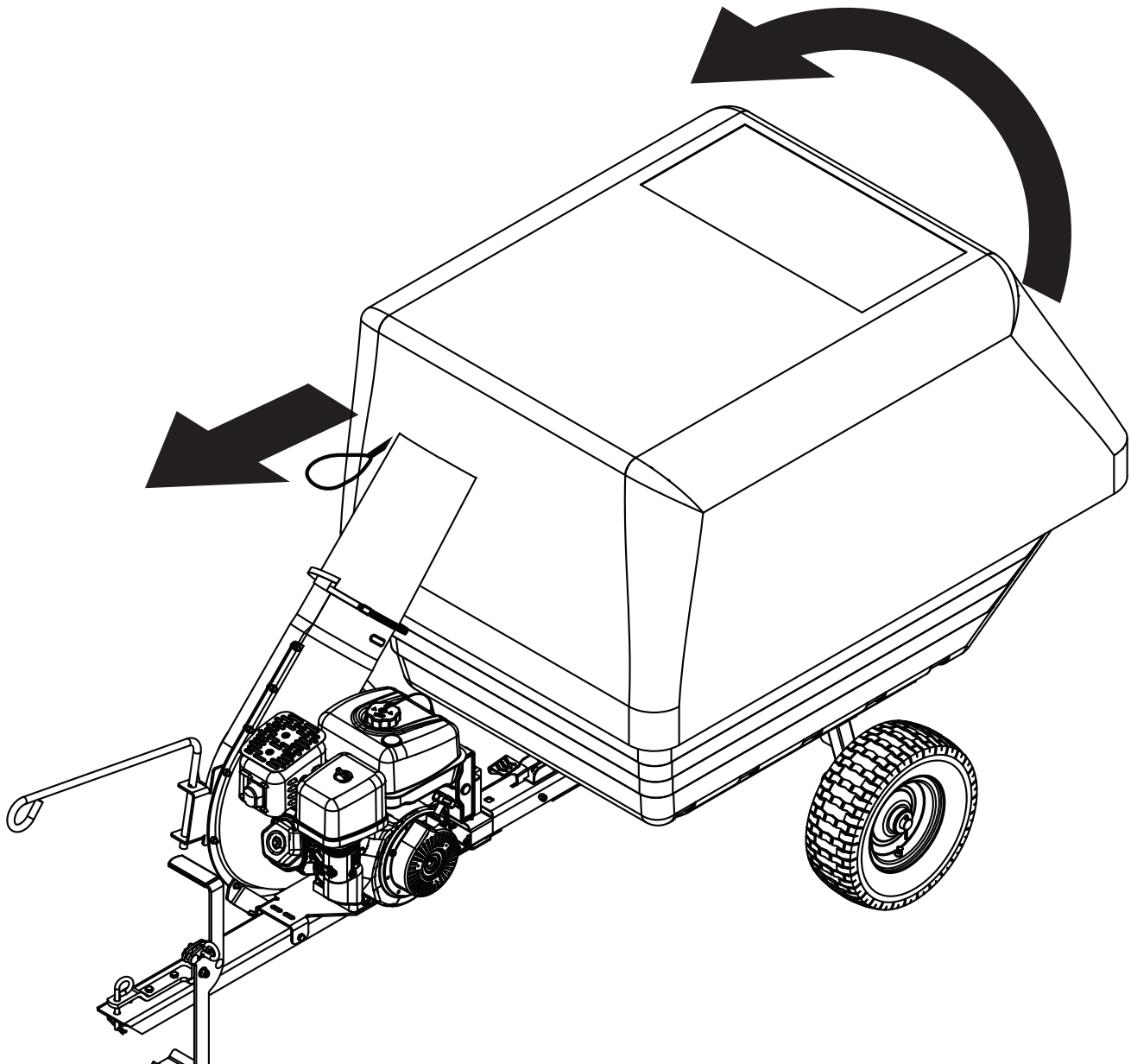
6. Using a rake or suitable tool, pull grass clippings and/or leaves out of the cart.

**Note:** Do not move the mower while the cart bed is down!

7. After the cart is emptied, raise the cart bed until the foot pedal latch locks.
8. Reinstall the cover on the cart and tighten drawstring.
9. Reinstall the hose into the cover and tighten the drawstring.



**CAUTION:** To avoid possible injury, be sure that no one is near the cart before releasing the latch lock lever.



# MAINTENANCE

## CUSTOMER RESPONSIBILITIES

- Read and follow the maintenance schedule and the maintenance procedures listed in this section.

MAINTENANCE SCHEDULE Fill in dates as you complete regular service.					Service Dates											
	Before each use	After each use	Every season	Before storage												
Check for loose fasteners	X															
Check cover	X															
Check tire pressure	X															
Check engine oil level	X															
Lubricate		X														
Clean		X	X													
Maintain engine per instructions below and in engine manual.																

## BEFORE EACH USE

### CHECK FOR LOOSE FASTENERS

- Make a thorough visual check of the 42 cu ft Lawn Vac for any bolts and nuts which may have loosened. Retighten any loose bolts and nuts.

### CHECK COVER

- Check the cover for wear. Replace cover if worn or damaged.

### CHECK TIRE PRESSURE

- Check tire pressure regularly. Do not exceed the maximum pressure listed on the side of the tire.

### CHECK ENGINE OIL LEVEL

- Check oil level before each use. Maintain engine oil as instructed in the separate engine manual.

## LUBRICATION

- At the beginning of each season, lubricate the latch, latch pivot bolt, and the axle where the hitch tongue pivots, with a light machine oil.



**WARNING:** Always stop engine and disconnect spark plug wire before cleaning, lubricating or before performing any repairs or maintenance.

## ENGINE MAINTENANCE

Select the oil's SAE viscosity grade according to your expected operating temperature. Refer to the engine manufacturer's Operating and Maintenance Manual.

- Check **oil level** before each use. Maintain engine oil at level shown in figure 32 below.
- Service **air cleaner** every 25 hours under normal conditions. Clean every few hours under extremely dusty conditions. Poor engine performance and flooding usually indicates that the air cleaner should be serviced. To service the air cleaner, refer to the separate engine manual.
- The **spark plug** should be cleaned and the gap reset once a season. Spark plug replacement at the start of each season is recommended. Check the engine manual for correct plug type and gap specifications.

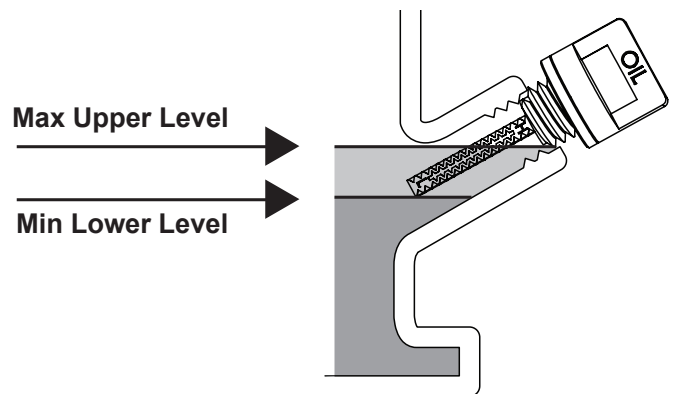


FIGURE 32

## CLEANING

- Make sure the cart and top are cleaned after each use. Grass clippings and leaves left in the cart will mildew and cause damage if not cleaned out.
- Clean the engine** regularly with a cloth or brush. Keep the cooling fins on the engine housing clean to permit proper air circulation which is essential to engine performance and life. Be sure to remove all dirt and debris from muffler area.

## SERVICE

### REMOVING THE IMPELLER



**WARNING:** Always stop the engine and remove the spark plug wire before working on the engine or the impeller housing assembly.

- Remove the outer impeller housing assembly.
- Remove the bolt (1), nut (2), and washer (3) from the impeller hub. See figure 33.
- Remove the impeller assembly and the key from the shaft.
- To remove an impeller that is frozen on the shaft, may need to tap the impeller with a rubber mallet.

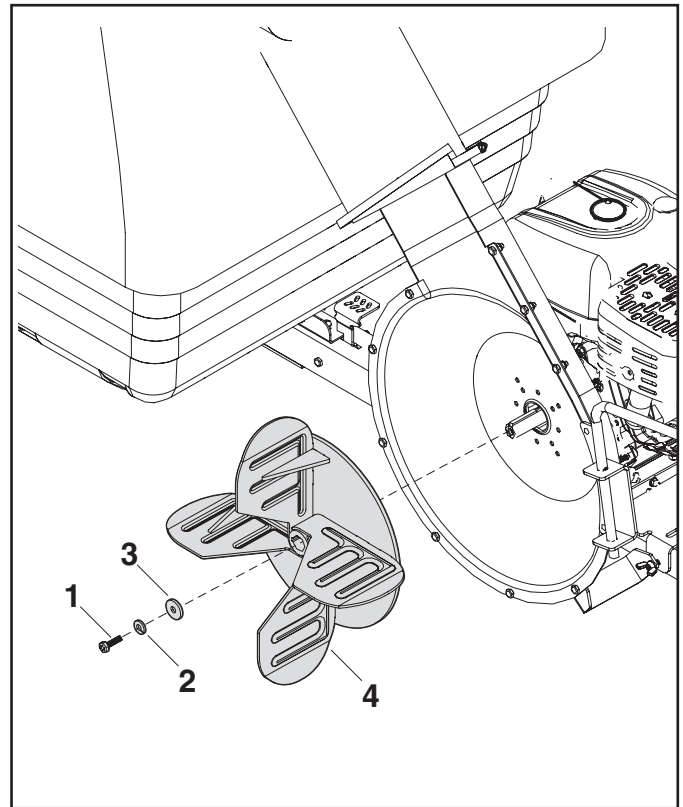


FIGURE 33

## STORAGE

It is important to prevent gum deposits from forming in essential fuel system parts such as the carburetor, fuel filter, fuel hose or tank during storage. Also, alcohol blended fuels (called gasohol or using ethanol or methanol) can attract moisture which leads to separation and formation of acids during storage. Acidic gas can damage the fuel system of an engine while in storage.

## TROUBLESHOOTING

PROBLEM	POSSIBLE CAUSE(S)	CORRECTIVE ACTION
Engine fails to start	<ol style="list-style-type: none"> <li>1. Spark plug wire disconnected.</li> <li>2. Fuel tank empty, or stale fuel.</li> <li>3. Fuel shut-off valve closed (if so equipped).</li> <li>4. Faulty spark plug.</li> <li>5. The battery is not working.</li> </ol>	<ol style="list-style-type: none"> <li>1. Connect wire to spark plug.</li> <li>2. Fill tank with clean, fresh fuel.</li> <li>3. Open fuel shut-off valve.</li> <li>4. Clean, adjust gap or replace.</li> <li>5. Check the battery connections. Charge or replace the battery.</li> </ol>
Loss of power; operation erratic.	<ol style="list-style-type: none"> <li>1. Spark plug wire loose</li> <li>2. Unit running on CHOKE.</li> <li>3. Blocked fuel line or stale fuel.</li> <li>4. Water or dirt in fuel system.</li> <li>5. Carburetor out of adjustment.</li> <li>6. Dirty air cleaner.</li> </ol>	<ol style="list-style-type: none"> <li>1. Connect and tighten spark plug wire.</li> <li>2. Move choke lever to OFF position.</li> <li>3. Clean fuel line; fill tank with clean fresh gasoline.</li> <li>4. Disconnect fuel line at carburetor to drain fuel tank. Refill with fresh fuel.</li> <li>5. Adjust carburetor.*</li> <li>6. Service air cleaner.*</li> </ol>
Engine overheats	<ol style="list-style-type: none"> <li>1. Carburetor not adjusted properly.</li> <li>2. Engine oil level low.</li> </ol>	<ol style="list-style-type: none"> <li>1. Adjust carburetor.*</li> <li>2. Fill crankcase with proper oil.</li> </ol>
Too much vibration	<ol style="list-style-type: none"> <li>1. Loose parts or damaged impeller.</li> </ol>	<ol style="list-style-type: none"> <li>1. Stop engine immediately and disconnect spark plug wire. Tighten all bolts and nuts. Make all necessary repairs. If vibration continues, have unit serviced by an authorized service dealer.</li> </ol>
Unit does not discharge	<ol style="list-style-type: none"> <li>1. Hoses are clogged.</li> <li>2. Foreign object lodged in impeller.</li> <li>3. 42 cu ft Lawn Vac Cart is full.</li> </ol>	<ol style="list-style-type: none"> <li>1. Stop engine immediately and disconnect spark plug wire. Clear hose(s) of debris.</li> <li>2. Stop engine immediately and disconnect spark plug wire. Remove lodged object.</li> <li>3. Empty cart.</li> </ol>

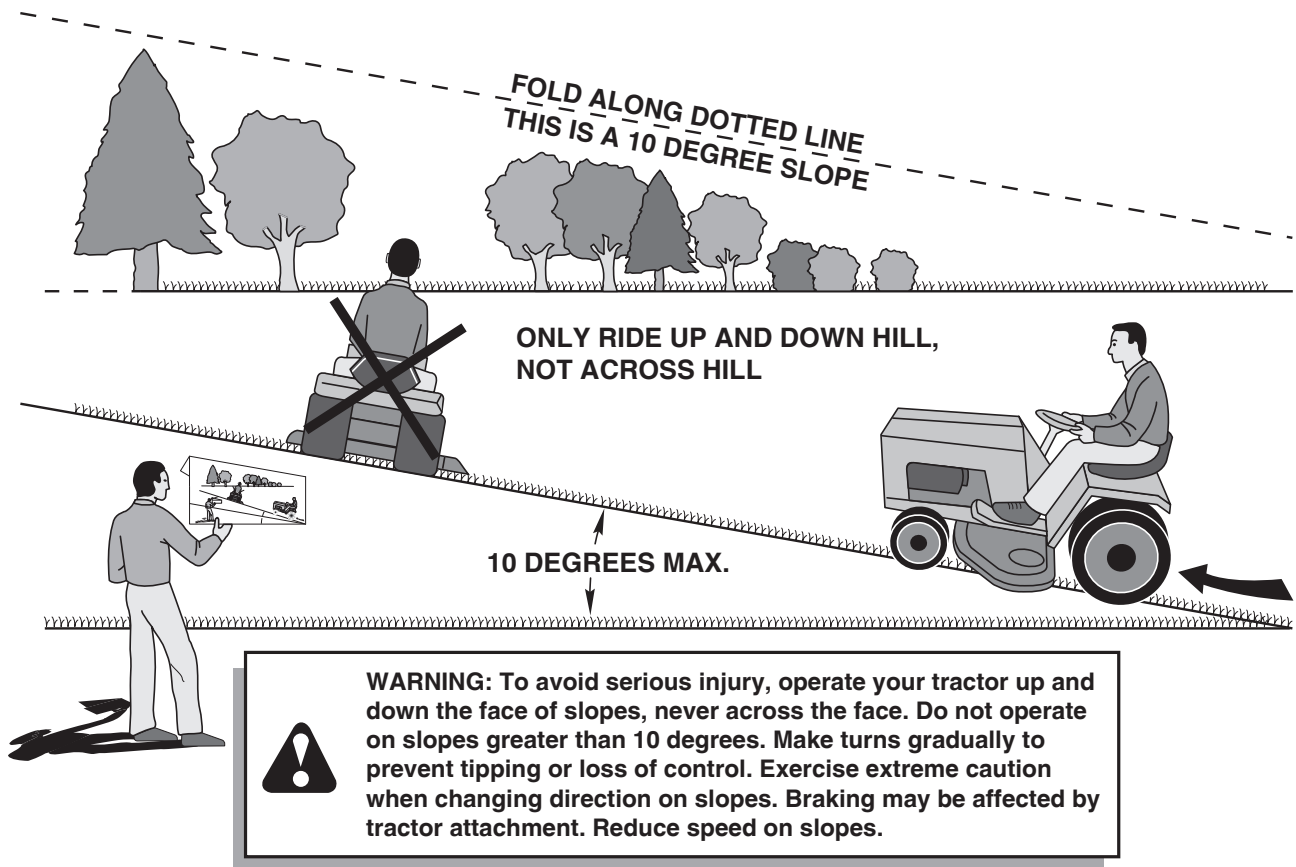
\*Refer to the engine manual packed with your unit.

**NOTE:** For repairs beyond the minor adjustments listed above, please contact your nearest authorized service dealer.

## TIPS AND TRICKS

- If the cart is too full, it will be more difficult to empty - make sure to empty the cart often.
- The long hose may slightly drag on the ground depending on your tractor. Most lawns will not damage a dragging hose, but avoid dragging the hose over gravel or pavement.
- Driving at a slower speed increases the efficiency of the vac system, especially when material is damp or wet.
- Make sure the drawstring on the cover is tight around the hose.
- Make sure the cover is tight under the lip of the cart bed.
- Make sure to take wide turns if your tractor has a tight turning radius.
- It may be helpful to loop the tarp strap holding the long hose more than once if possible.
- Make sure to clear the drawstring lock of debris often - this will help ensure the drawstring continues to function properly.
- If the short hose becomes punctured on the outside of the bend, rotate the hose so the puncture is on the inside of the bend.

# SUGGESTED GUIDE FOR SIGHTING SLOPES FOR SAFE OPERATION OF TRACTOR WITH ATTACHMENT



1. Fold this page along dotted line indicated above.
2. Hold page before you so that its left edge is vertically parallel to a tree trunk or other upright structure.
3. Sight across the fold in the direction of hill slope you want to measure.
4. Compare the angle of the fold with the slope of the hill.

***SpeedEPart*** *the fastest way to purchase parts* [www.speedepart.com](http://www.speedepart.com)

**REPAIR PARTS**

Agri-Fab, Inc.  
809 South Hamilton  
Sullivan, IL. 61951  
217-728-8388  
[www.agri-fab.com](http://www.agri-fab.com)