

# Agri-Fab®

## OWNERS MANUAL

Model No.  
45-03732



## SUN SHADE

**CAUTION:**  
Read Rules for  
Safe Operation  
and Instructions  
Carefully

- Safety
- Assembly
- Operation
- Maintenance
- Parts

**SpeedPart** *the fastest way to purchase parts* [www.speedepart.com](http://www.speedepart.com)

## SAFETY RULES

Any power equipment can cause injury if operated improperly or if the user does not understand how to operate the equipment. Exercise caution at all times when using power equipment.

1. This sun shade does not provide protection against exhaust fumes, collision, rollover or other accidents.
2. Read the sun shade and vehicle owner's manuals and know how to operate your vehicle and sun shade before using the sun shade attachment.
3. Be sure there is adequate ventilation when using the tractor and sun shade in confined areas.

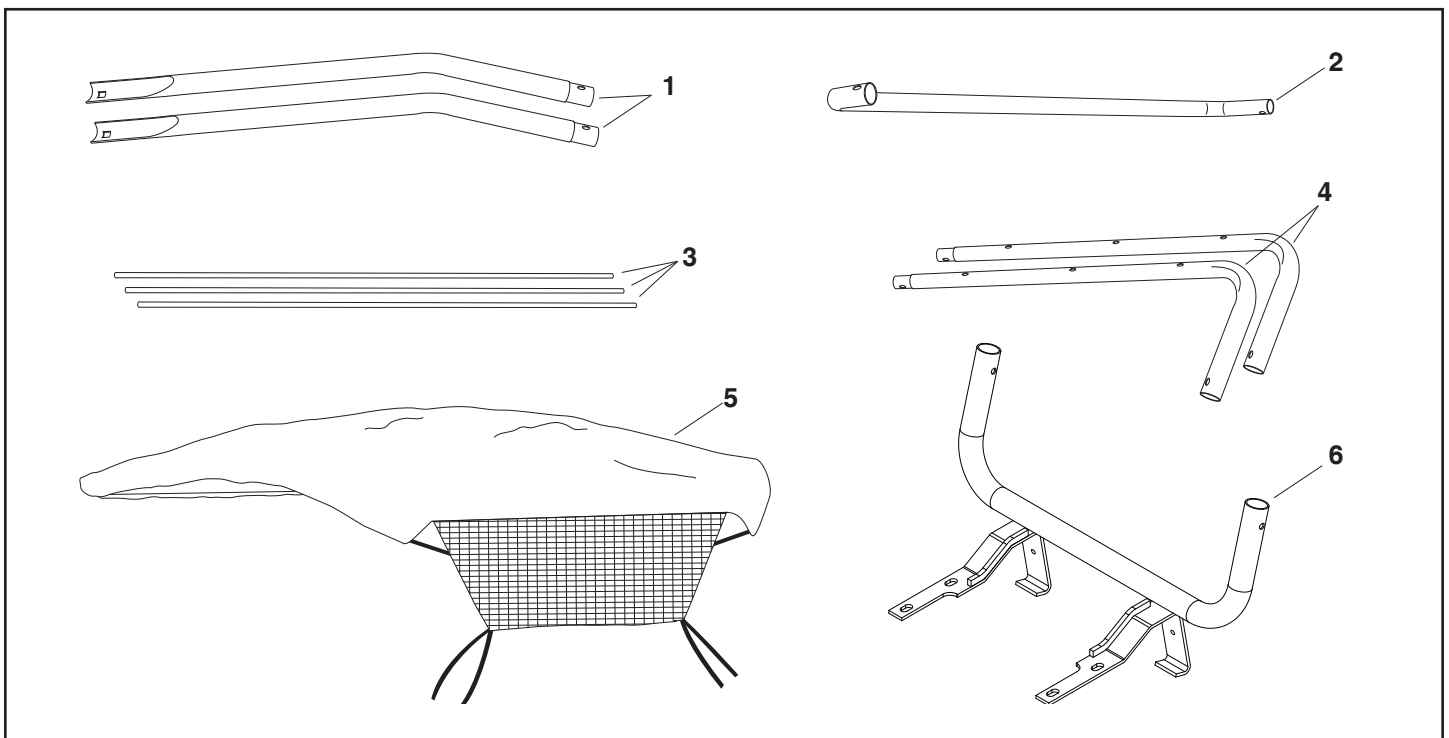
4. The sun shade will restrict your field of vision in some directions. Use extra caution when operating your tractor with the sun shade attached.
5. Watch out for low tree limbs or other overhead obstructions that may not previously have interfered with operation of the tractor. The extra height of the sun shade may cause these objects to become obstacles.
6. Check the area of operation thoroughly before using the tractor.



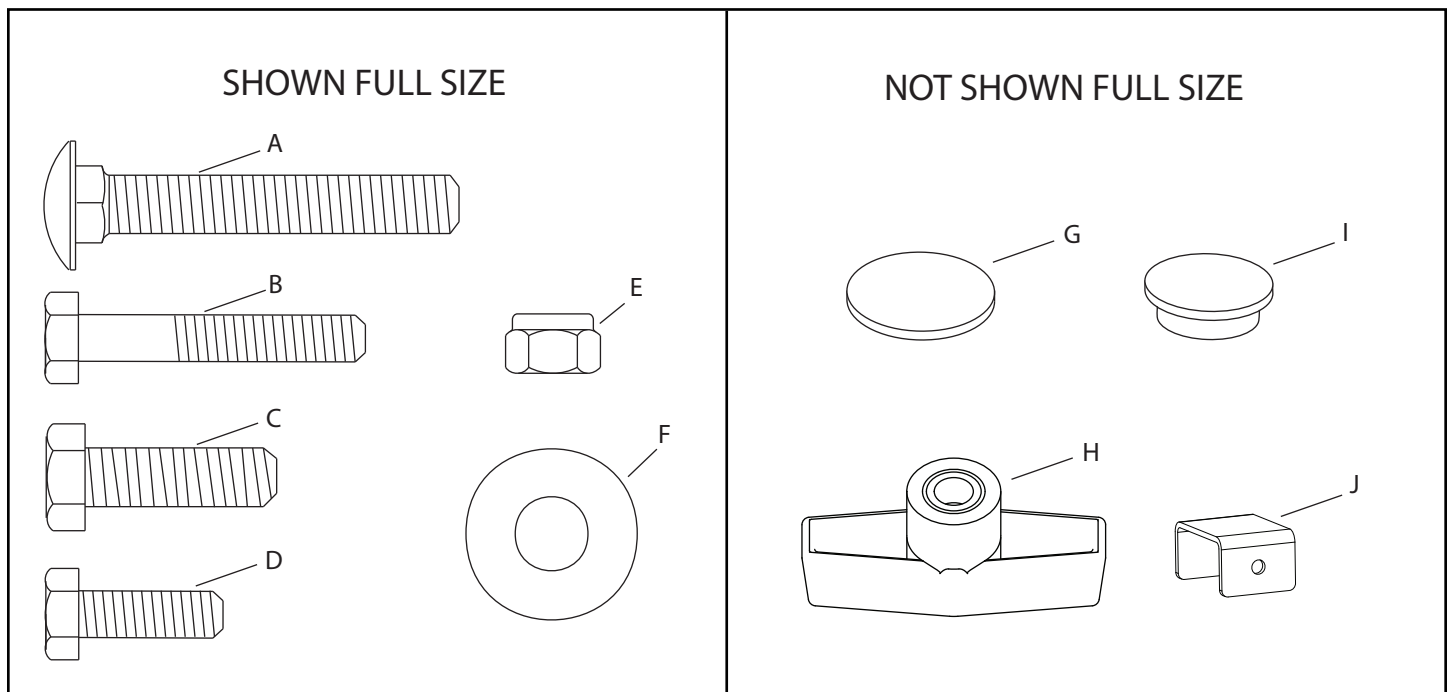
Look for this symbol to point out important safety precautions. It means — **Attention!! Become alert!! Your safety is involved.**

## CARTON CONTENTS

1. Upright Tubes (2)
2. U - Tube
3. Support Rods (3)
4. Top Tubes (2)
5. Vinyl Canopy
6. Base Bracket Assembly



# HARDWARE PACKAGE



REF.	QTY.	DESCRIPTION	REF.	QTY.	DESCRIPTION
A	2	Carriage Bolt, 5/16" x 2"	F	6	Flat Washer, 5/16"
B	4	Hex Bolt, 1/4" x 1-1/2"	G	4	Adhesive Pad
C	4	Hex Bolt, 5/16" x 1"	H	2	Plastic Knob
D	2	Hex Bolt, 1/4" x 3/4"	I	2	Plastic Cap
E	6	Nylock Nut, 1/4"	J	2	Support Bracket

## TOOLS REQUIRED FOR ASSEMBLY

- (2) 7/16" Wrenches
- (1) 1/2" Socket Wrench

## REMOVAL OF PARTS FROM CARTON

- Remove all parts and hardware packages from the carton. Lay out parts and hardware and identify using the illustrations on pages 2 and 3.

**NOTE:** Not all of the supplied parts and hardware will be needed for one particular tractor. Unneeded items may be discarded after assembly has been completed.

**NOTE:** Right hand (RH) and left hand (LH) are determined from the operator's position while seated on the tractor.



**CAUTION:** Make sure tractor seat raises and lowers freely after attaching Sun Shade. The tractor's operator presence safety switch will not operate if seat is stuck down.

## FOR LAWN TRACTORS ONLY. SKIP TO STEP 3 IF YOU HAVE A GARDEN TRACTOR

### STEP 1: (SEE FIGURE 1)

- Attach the two support brackets to the base bracket assembly using two 1/4" x 3/4" hex bolts (D) and 1/4" nylock nuts (E).
- Attach an adhesive pad (G) to each support bracket.

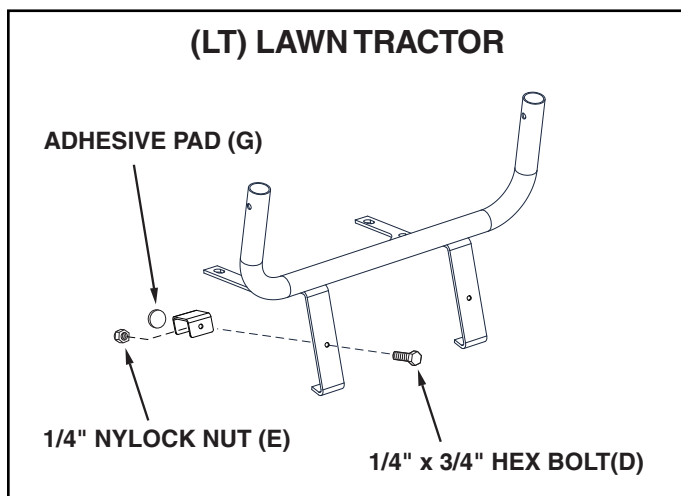


FIGURE 1

### STEP 2: (SEE FIGURE 2)

- Raise the tractor seat and remove the seat springs and four bolts from the rear fender using a 1/2" socket.
- Place the support brackets against the rear of the fender.
- Attach the base bracket assembly and the seat springs to the fender using the four 5/16" x 1" bolts (C) and 5/16" washers (F) supplied with the sun shade. **Tighten** the bolts using moderate force. Overtightening might damage the threaded holes in the fender.
- Insert the plastic caps into the ends of the base bracket tube.

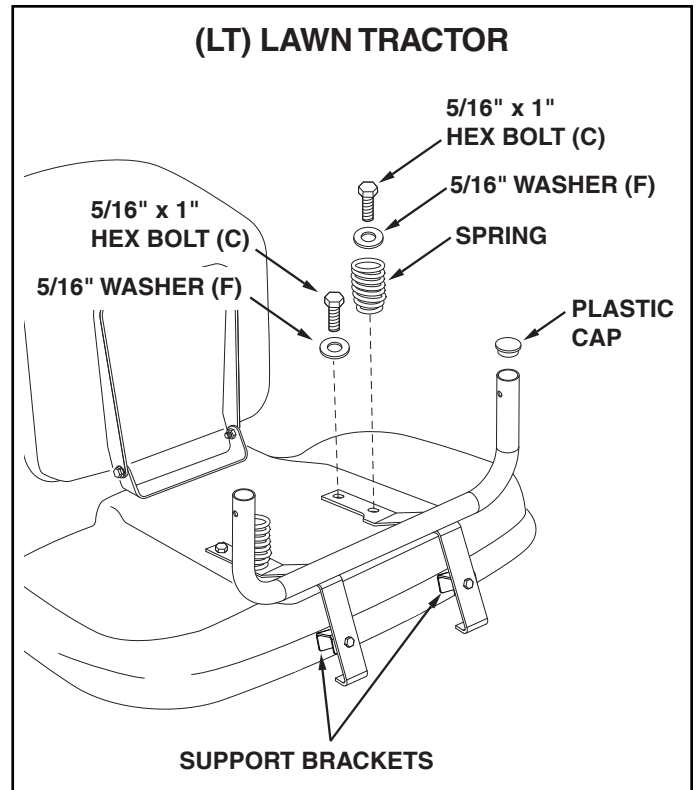


FIGURE 2

## FOR GARDEN TRACTORS ONLY

### STEP 3: (SEE FIGURE 3)

- Raise the tractor seat and remove the seat springs and four bolts from the rear fender using a 1/2" socket.
- Place the hooked ends of the base bracket assembly underneath the rear of the fender as shown.
- Attach the base bracket assembly and the seat springs to the fender using the four 5/16" x 1" bolts (C) and 5/16" washers (F) supplied with the sun shade. **Tighten** the bolts using moderate force. Overtightening might damage the threaded holes in the fender.
- Insert the plastic caps into the ends of the base bracket tube.

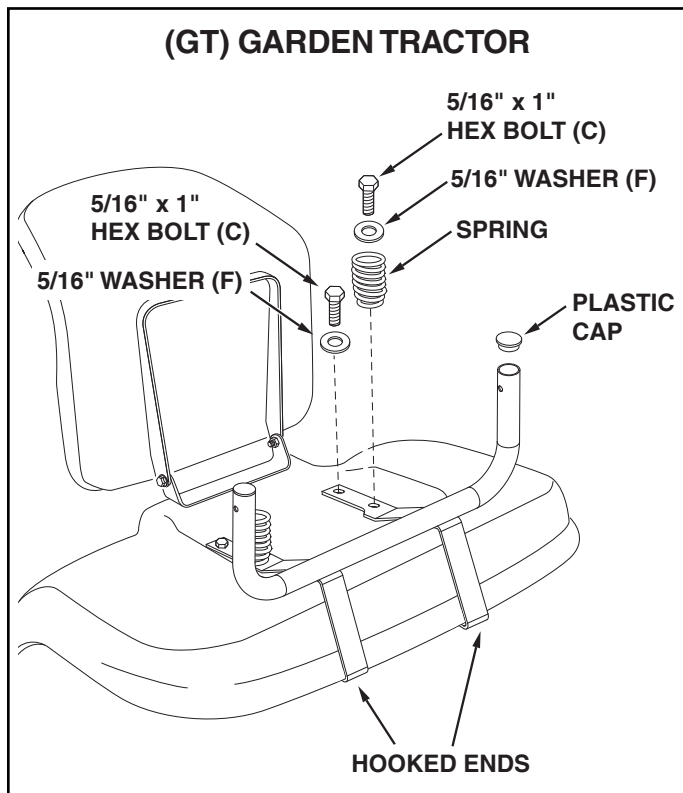


FIGURE 3

## FOR ALL TRACTORS

### STEP 4: (SEE FIGURE 4)

- Assemble the upright tubes to the holes in the base assembly using a 5/16-18 x 2" carriage bolt (A), 5/16" flat washer (F) and plastic knob (H) for each tube.

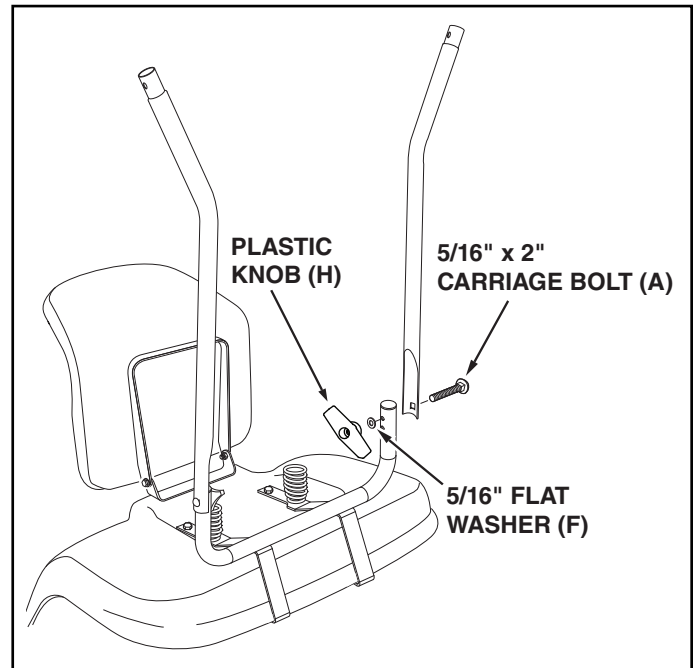


FIGURE 4

## STEP 5: (SEE FIGURE 5)

- Assemble the top tubes to the upright tubes using two 1/4" x 1-1/2" hex bolts (B) (outside) and two 1/4" nylock nuts (E) (inside). **Do not tighten yet.**
- Fit the front U-tube onto the top tubes. Fasten the tubes together using two 1/4" x 1-1/2" hex bolts (B) (outside) and two 1/4" nylock nuts (E) (inside). **Tighten all** loose bolts and nuts.
- Fit the three support rods into the holes in the top tubes, with the rods arching upward. **Do not** over bend the rods when installing.

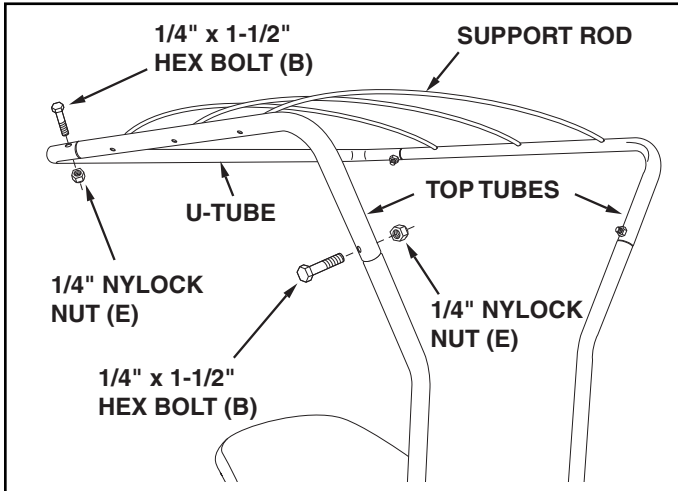


FIGURE 5

## STEP 6: (SEE FIGURE 6)

- Place the vinyl canopy on top of the tubing frame, fitting the front of the vinyl canopy around the front U-tube. Secure the nylon mesh to the upright tubes using the ties located on the corners of the mesh.

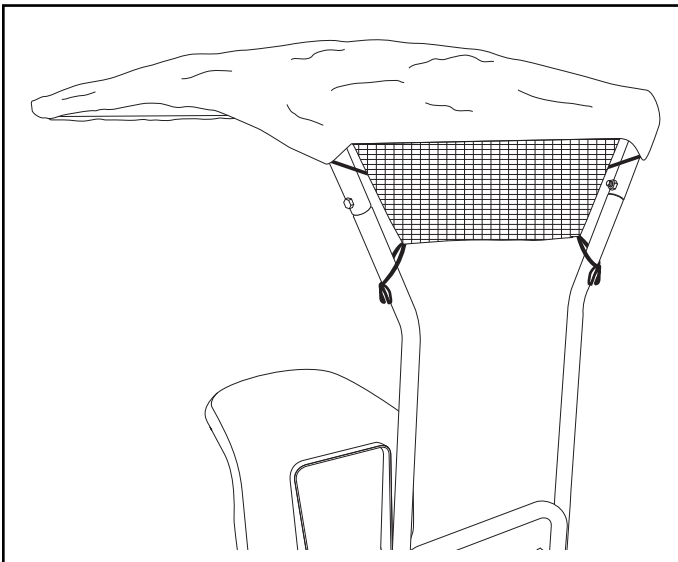


FIGURE 6

## OPERATION

Read this owner's manual and safety rules before operating your tractor with the sun shade.



**CAUTION:** This sun shade does not provide protection against exhaust fumes, collision, rollover or other accidents.



**CAUTION:** Watch out for low tree limbs and other overhead objects which may interfere with the sun shade.



**CAUTION:** Never transport the tractor in an open truck or open trailer while the sun shade is attached.

1. Check the area of operation thoroughly before using the tractor with the sun shade. The added height of the sun shade and a reduced field of vision require extra caution during operation.
2. Remove the upper sun shade frame and canopy before you transport the tractor in an open truck or open trailer.

## MAINTENANCE

### CHECK FOR LOOSE FASTENERS

1. Before each use make a thorough visual check of the sun shade for any bolts and nuts which may have loosened. Retighten any loose bolts and nuts.

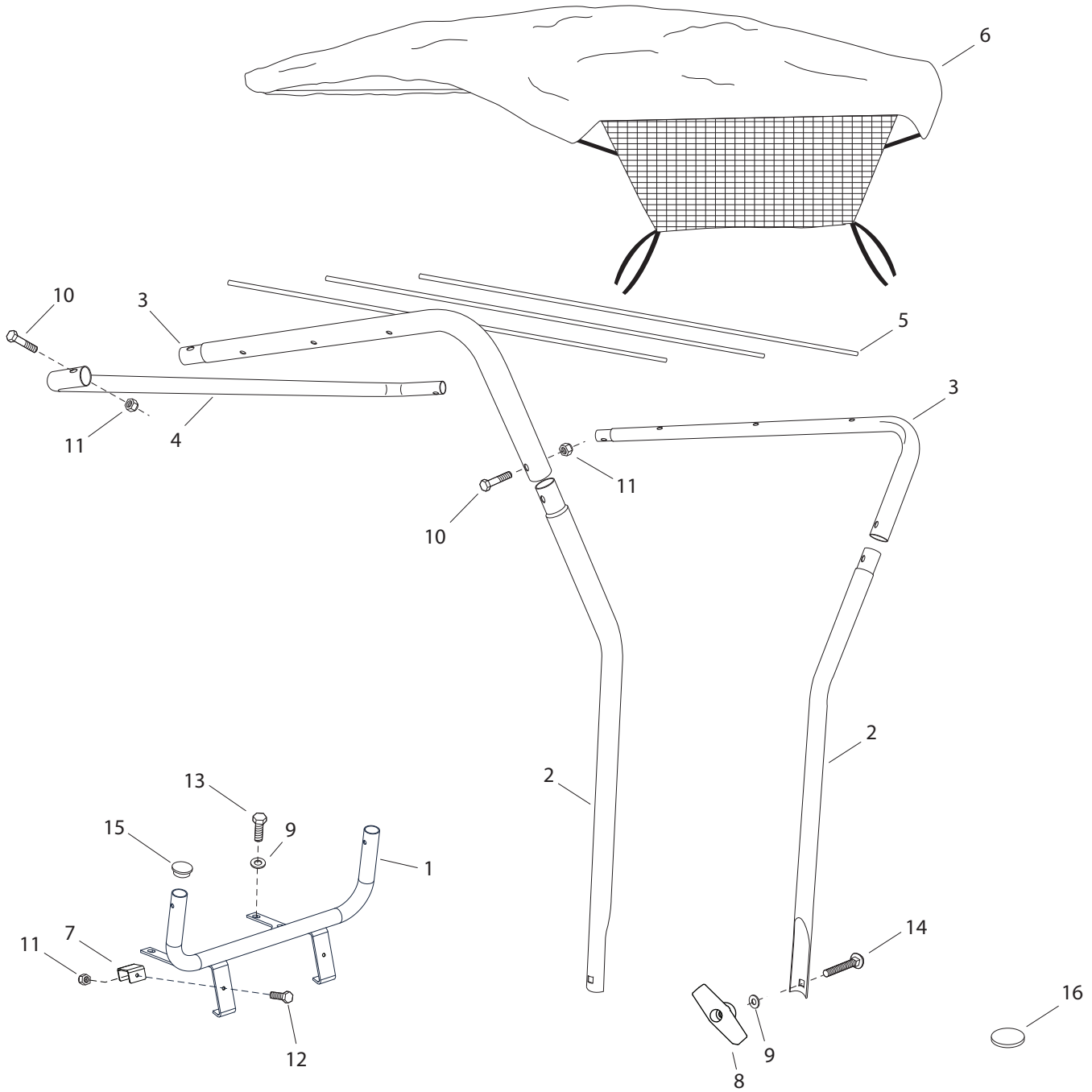
### CLEANING

2. Wipe loose dirt and debris from the vinyl canopy after each use. The vinyl canopy can be washed using mild liquid soap and water.

## STORAGE

1. Clean the vinyl canopy thoroughly with mild liquid soap and water. Allow to dry before storing.
2. Store the sun shade in a clean, dry area away from direct sun light.

# REPAIR PARTS FOR MODEL 45-03732 SUN SHADE



REF. NO.	PART NO.	QTY.	DESCRIPTION	REF. NO.	PART NO.	QTY.	DESCRIPTION
1	66296	1	Base Bracket Assembly	10	43648	4	Hex Bolt, 1/4-20 x 1-1/2"
2	25014	2	Upright Tube	11	47189	6	Nylock Nut, 1/4-20
3	25013	2	Top Tube	12	43012	2	Hex Bolt, 1/4-20 x 3/4"
4	25012	1	U-Tube	13	43063	4	Hex Bolt, 5/16-18 x 1"
5	25015	3	Support Rod	14	44977	2	Carriage Bolt, 5/16-18 x 2"
6	49609	1	Vinyl Canopy	15	47674	2	Plastic Cap
7	26462	2	Support Bracket	16	48661	4	Adhesive Pad
8	43720	2	Plastic Knob		40921	1	Owner's Manual
9	43081	6	Flat Washer, 5/16"				

***SpeedPart*** *the fastest way to purchase parts* [www.speedepart.com](http://www.speedepart.com)

**REPAIR PARTS**

Agri-Fab, Inc.  
809 South Hamilton  
Sullivan, IL. 61951  
217-728-8388  
[www.agri-fab.com](http://www.agri-fab.com)