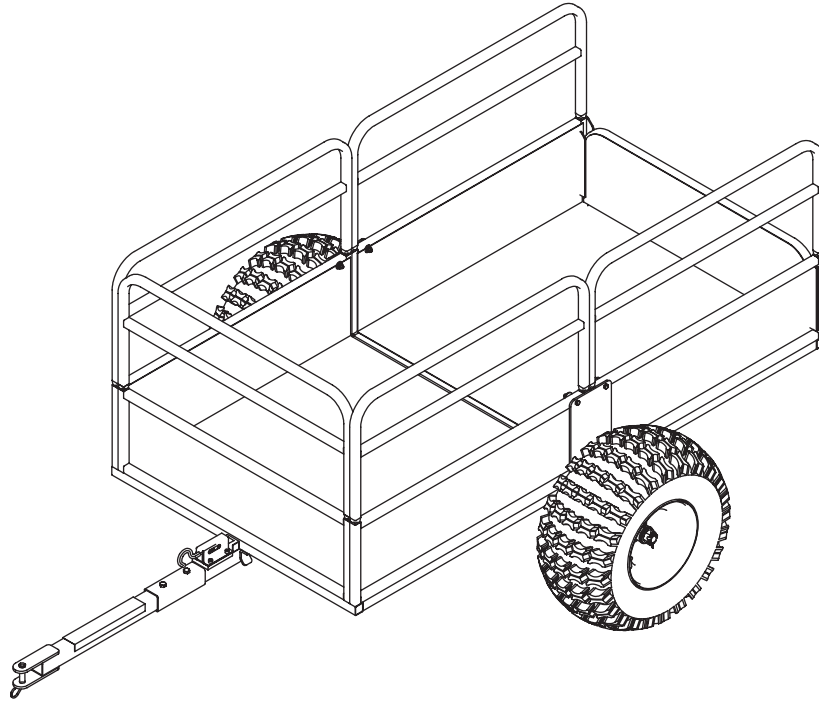


Agri+Fab®

Lawn Care Made Easy®



45-0554

CART

EN FRANCAIS

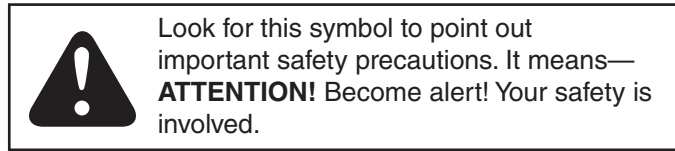
EN ESPANOL



.....3	FRANÇAIS.....17
ENGLISH.....5	ESPAÑOL.....28

SAFETY RULES

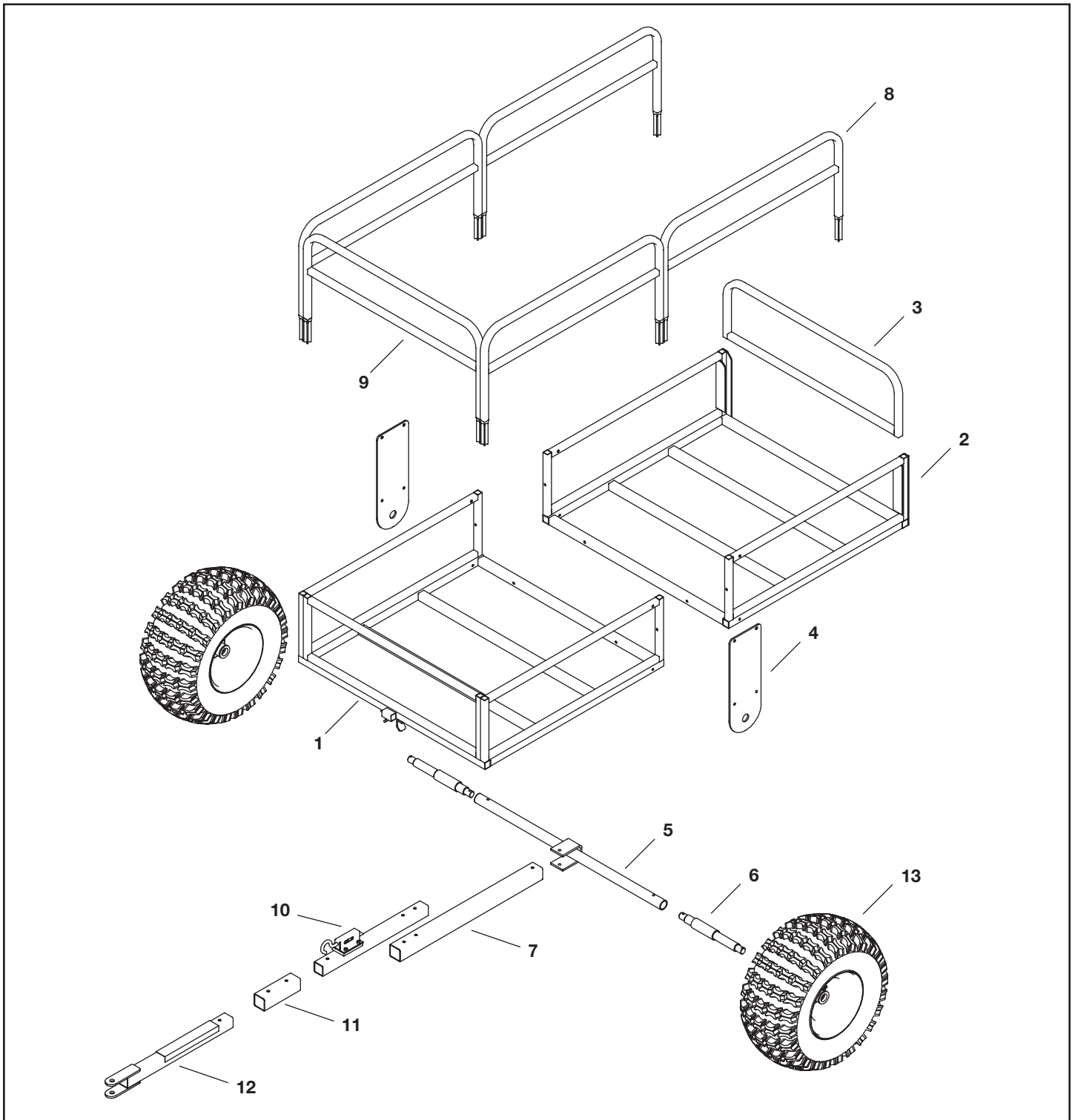
Remember, any equipment can cause injury if operated improperly or if the user does not understand how to operate the equipment. Exercise caution at all times when using this equipment.



READ, UNDERSTAND, AND FOLLOW ALL ASSEMBLY, INSPECTION, MAINTENANCE, AND USE INSTRUCTIONS PROVIDED BEFORE EACH USE. FAILURE TO FOLLOW ALL WARNINGS AND INSTRUCTIONS COULD RESULT IN SERIOUS INJURY OR DEATH.

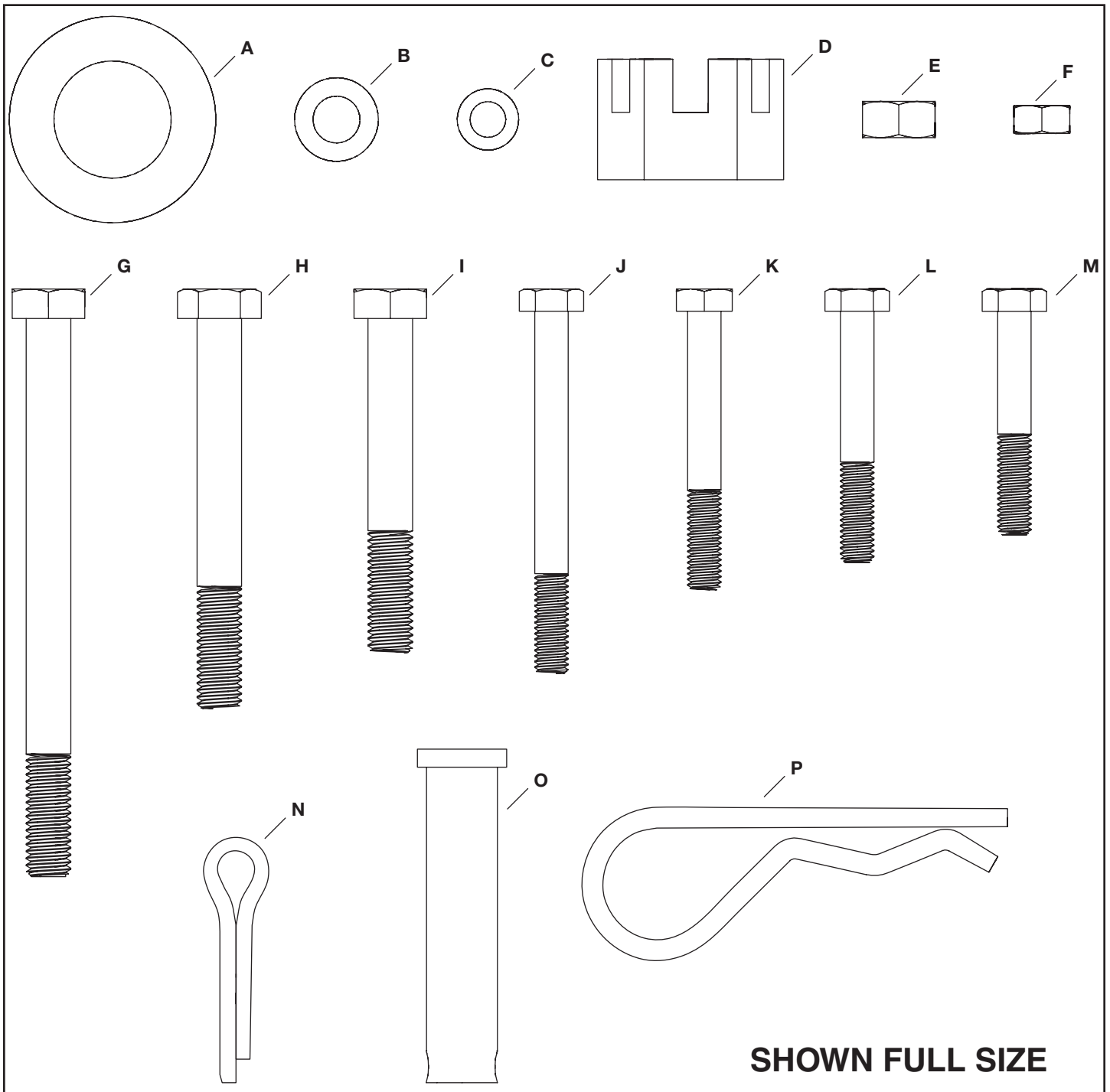
- The wheel bearings are not factory greased. You must grease the bearings before use. Check grease level frequently to prevent bearings from seizing.
- Double check the assembly of your trailer to be sure you assembled it correctly and all nut and bolt assemblies are tight before initial use.
- Be sure to periodically check all nut and bolts for tightness. Over time, nuts and bolts may become loose from vibration.
- Be sure to always have the correct amount of air pressure in tires. This will help deter from unnecessary wear and/or damage. Air pressure can be found on the sidewall of the tire.
- Never drive on hilly terrain - excessive weight can cause weight shifts which can lead to loss of control of your ATV and/or ATV trailer.
- Do not drive in excess of 10 mph while using this product.
- Never allow people or animals to ride in the ATV trailer! It is not designed for that matter.
- Use caution near the trailer tilt latch. Be sure the latch is engaged before each use.
- Never exceed the maximum weight capacity of 1250 lbs of evenly distributed weight.

CARTON CONTENTS - PARTS



REF	QTY	PART NO	DESCRIPTION	REF	QTY	PART NO	DESCRIPTION
1	1	2-132BL3	Front Trailer Frame	8	4	2-139OR1	Side Containment Rack
2	1	2-133BL3	Rear Trailer Frame	9	1	2-140OR1	Front Containment Rack
3	1	2-134BL3	Tailgate	10	1	2-141BL3	Latch Tube Assembly
4	2	2-135BL3	Axle Mount Plate	11	1	2-142BL3	Connector Pocket
5	1	2-136BL3	Axle Tube	12	1	2-143BL3	Front Tongue Tube
6	2	2-137BL3	Axle Spindle	13	2	2-144	Trailer Wheel
7	1	2-138BL3	Rear Tongue Tube				

CARTON CONTENTS - HARDWARE



SHOWN FULL SIZE

REF	QTY	PART NO	DESCRIPTION	REF	QTY	PART NO	DESCRIPTION
A	2	2-145	Washer, M20	I	2	2-153	Bolt, M8 x 1.25 x 60
B	7	2-146	Washer, M8	J	2	2-154	Bolt, M6 x 1.25 x 65
C	16	2-147	Washer, M6	K	6	2-155	Bolt, M6 x 1.25 x 50
D	2	2-148	Castle Nut, M20 x 1.5	L	2	2-156	Bolt, M6 x 1.25 x 45
E	5	2-149	Nut, M8 x 1.25	M	4	2-157	Bolt, M6 x 1.25 x 40
F	14	2-150	Nut, M6 x 1.0	N	2	2-158	Cotter Pin
G	2	2-151	Bolt, M8 x 1.25 x 100	O	1	2-159	Clevis Pin
H	1	2-152	Bolt, M8 x 1.25 x 70	P	1	714-0117	Hair Cotter Pin

ASSEMBLY INSTRUCTIONS

TOOLS REQUIRED FOR ASSEMBLY

- (2) 10 mm Wrenches
- (2) 13 mm Wrenches
- (1) 20 mm Socket with Ratchet and Extension
- (1) Needle Nose Pliers
- (1) Grease Gun

Lay out and identify the parts and hardware using the illustrations on page 3 and page 4.

IMPORTANT ASSEMBLY TIPS

Do not tighten any nut and bolt combinations completely until all parts are assembled together! Finger tighten plus one turn of a wrench only. This will temporarily hold the lock nut on the bolt while helping alignment of all parts. After all parts are assembled together, all nut and bolt combinations must be completely tightened.

Do initial assembly steps with the trailer frame parts oriented upside down. This will aid in the assembly.

ASSEMBLE THE TRAILER FRAME

STEP 1: (SEE FIGURE 1)

- Ensure the front trailer frame (1) and rear trailer frame (2) are upside down.
- Secure the sides of the front trailer frame (1) to the sides of the rear trailer frame (2) using two M6x50 mm bolts (K), M6 steel washers (C), and M6 locknuts (F).
- Secure the bottom of the front trailer frame (1) to the bottom of the rear trailer frame (2) using two M6x65 mm bolts (J), M6 steel washers (C), and M6 locknuts (F).

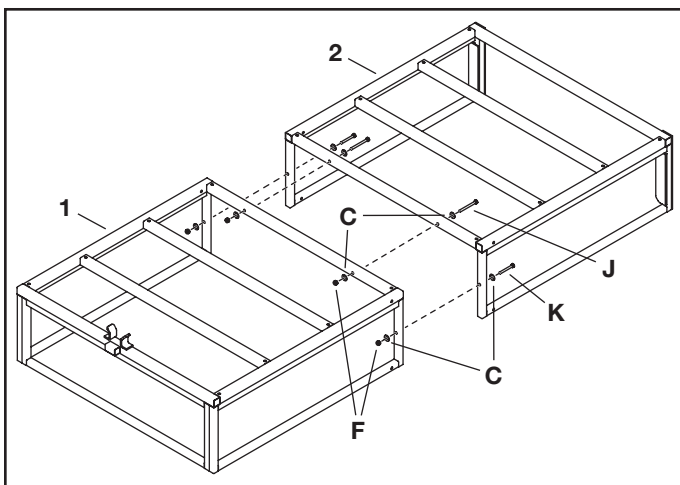


FIGURE 1

ATTACH THE AXLE MOUNTING PLATES

STEP 2: (SEE FIGURE 2)

- With the trailer assembly in the upside down position, attach the top of the two axle mounting plates (4) to the trailer frame assembly with four M6x40 mm bolts (M), M6 steel washers (C), and M6 locknuts (F).
- Secure the bottoms of the two axle mounting plates (4) using four M6x50 mm bolts (K), M6 steel washers (C), and M6 locknuts (F).

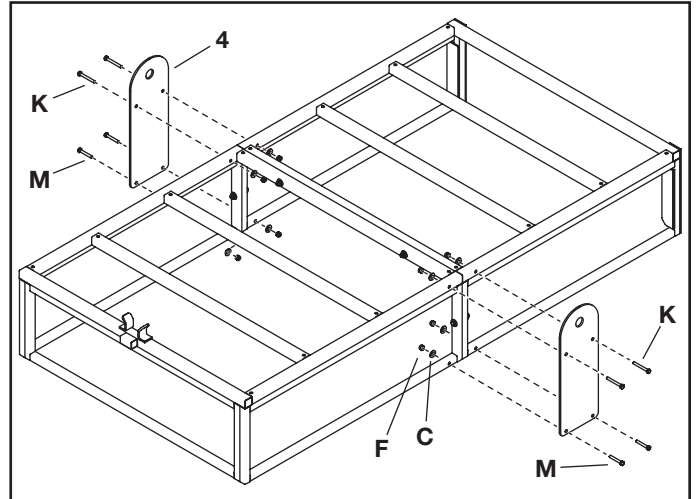


FIGURE 2

ASSEMBLE THE HITCH

STEP 3: (SEE FIGURE 3)

- Insert the rear tongue tube (7) into the "u-bracket" on the axle tube (5) and secure with one M8x70 mm bolt (H), M8 steel washer (B), and M8 locknut (E).
- Secure the latch tube assembly (10) to the top of the rear tongue tube (7) with two M8x100 mm bolts (G), M8 steel washers (B), and M8 locknuts (E).
- Insert the latch tube assembly (10) and the front tongue tube (12) into the connector pocket (11) and secure with two M8x60 mm bolts (I), M8 steel washers (B), and M8 locknuts (E).

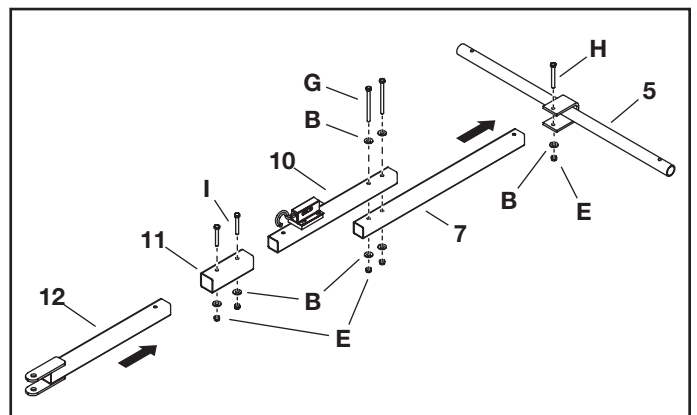


FIGURE 3

ATTACH THE TONGUE ASSEMBLY

STEP 4: (SEE FIGURE 4)

- Ensure the frame assembly is upside down.
- Attach the tongue assembly to the frame assembly by inserting the short end of the two axle spindles (6) through the axle mounting plates (4) and threading into the axle tube (5). Thread axle spindles until snug and then loosen until holes in the axle tube and spindles are aligned. Secure the two axle spindles to the axle tube using two M6x45 mm bolts (L) and M6 locknuts (F).

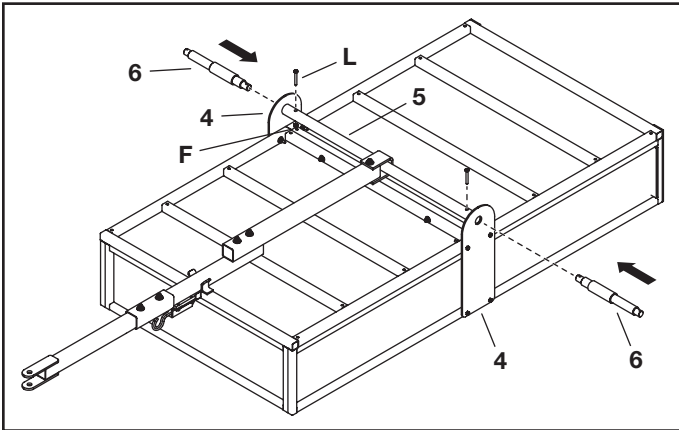


FIGURE 4

ATTACH THE WHEELS

STEP 5: (SEE FIGURE 5)

- Turn the cart assembly right-side up.
- Slide the two wheels (13) onto the axle spindles (6) with grease fittings and air valves facing outward. Secure with two 20 mm castle nuts (D) and 20 mm steel washers (A). Tighten the castle nuts until snug and then back off slightly to allow free movement of the wheels and cotter pin (N) alignment.
- Insert the two cotter pins (N) through the axle spindles (6) and castle nuts (D) so that the head of each cotter pin is seated in the corresponding castle nut. Using a pair of pliers, bend the prongs of the two cotter pins around the other side of the castle nuts so that the cotter pin cannot fall out.
- You must now tighten all nut and bolt assemblies. Be sure not to over tighten or crush tubing when tightening.
- Grease both wheels with a grease gun and multipurpose bearing grease. Check the grease level frequently to prevent bearings from excessive wear or failure.

IMPORTANT: Make sure the tire pressure does not exceed the maximum rating written on the tire. Recommended operating pressure is 24 psi.

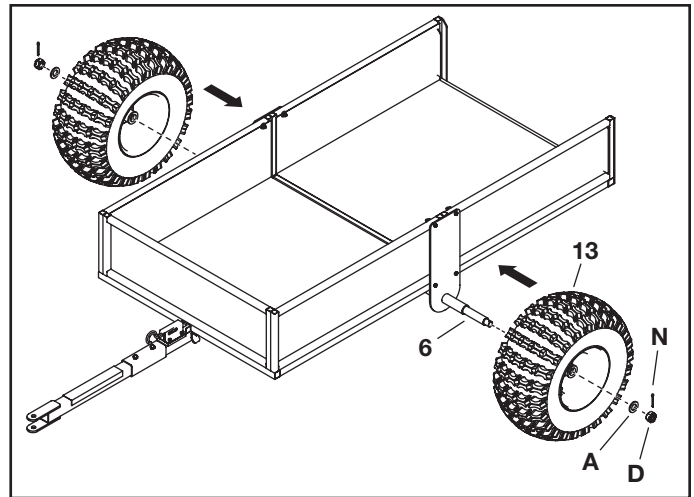


FIGURE 5

ASSEMBLE THE CONTAINMENT RACKS

STEP 6: (SEE FIGURE 6)

- Slide the removable tailgate (3) into the channels on the rear trailer frame (2). Slide the four side containment racks (8) and the one front containment rack (9) into the corresponding tubes on the trailer frame assembly.

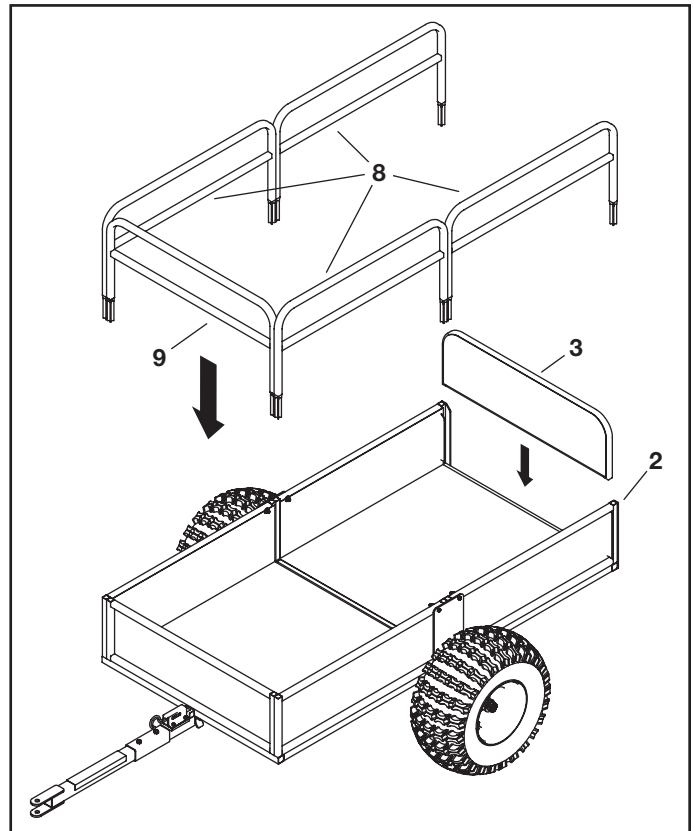


FIGURE 6

ASSEMBLE THE CART TO YOUR VEHICLE

WARRANTY

STEP 7: (SEE FIGURE 7)

- Use the clevis pin (O) and hair cotter pin (P) to attach the cart to your vehicle.

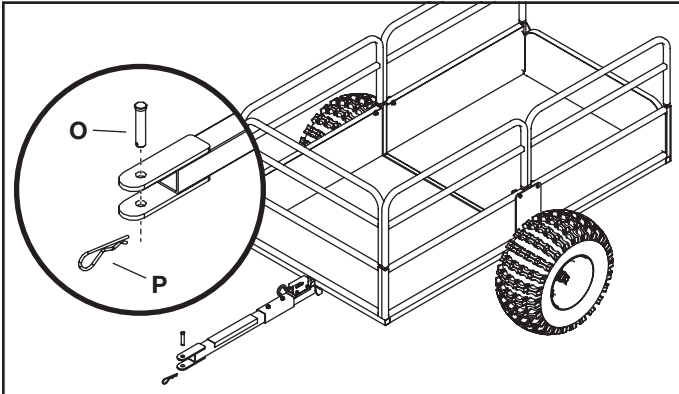


FIGURE 7

OPERATION



CAUTION: Failure to obey the following cautions could result in personal injury or product damage:

When using this cart, ensure that you **ALWAYS**:

- Be sure the cart is securely attached to your ATV hitch.
- Check tires for correct air pressure before each use.
- Inspect before each and every use to be sure there is no product damage or loose/missing bolts and hardware.
- Have wheel bearings properly greased to keep bearings from seizing.

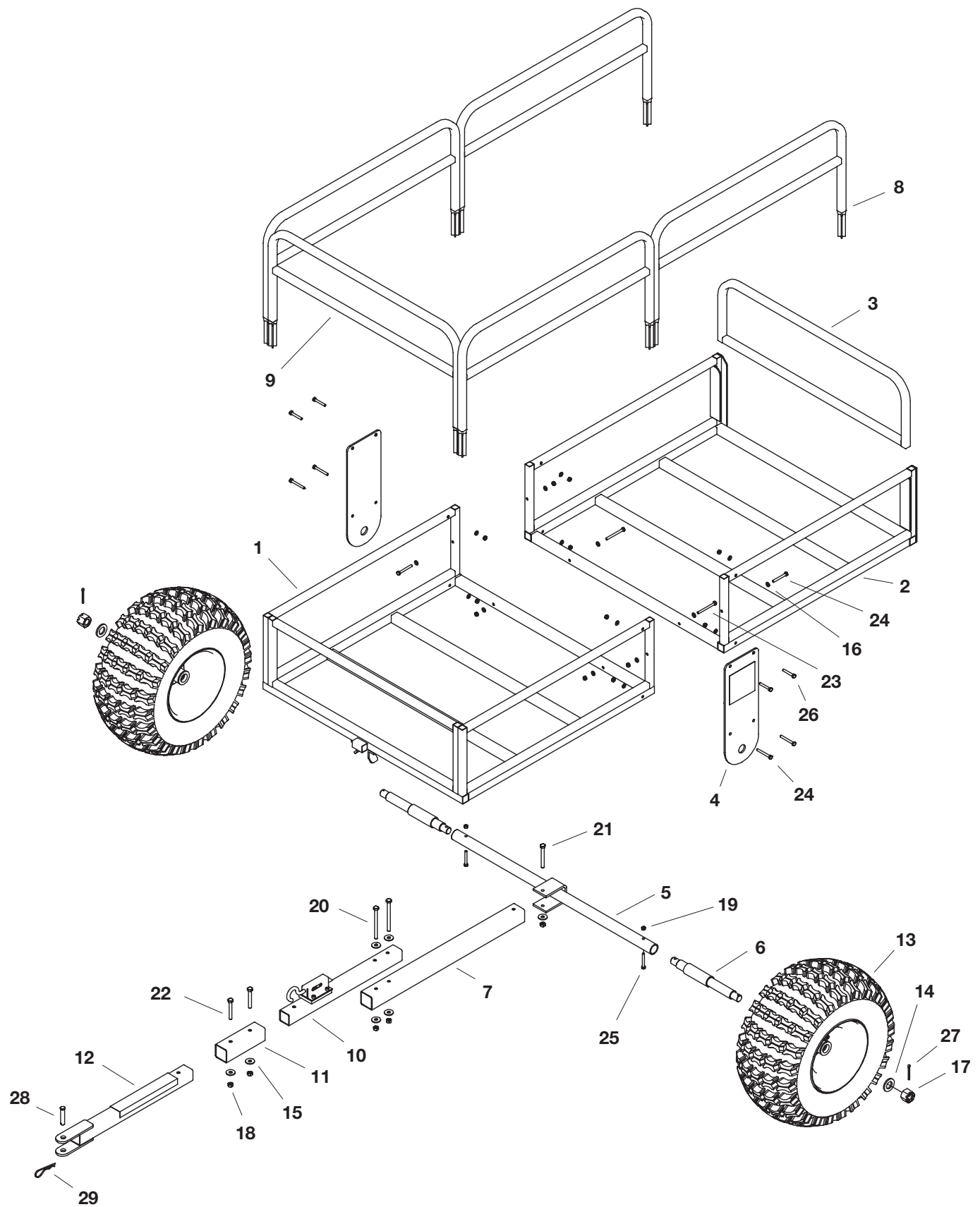
When using this cart, ensure that you **NEVER**:

- Use excessive speeds while towing the cart.
- Exceed the maximum load capacity of 1250 lb.
- Allow people or animals to ride in the cart.
- Use on hilly terrain.
- Use a damaged product.
- Use when intoxicated or using over-the-counter medication or prescription drugs.
- Use on rocky or obstacle-ridden terrain.
- Use carelessly -- Think Safety!

MAINTENANCE

- Always clean the cart after each use.
- Check periodically for loose bolts.
- Check the grease level of the wheels frequently to prevent bearings from excessive wear or failure.
- After extended periods of non-use, check the psi level of the wheels. Maximum psi is 24.

REPAIR PARTS FOR 45-0554 CART



REPAIR PARTS FOR 45-0554 CART

REF	QTY	PART NO	DESCRIPTION	REF	QTY	PART NO	DESCRIPTION
1	1	2-132BL3	Front Trailer Frame	16	16	2-147	Washer, M6
2	1	2-133BL3	Rear Trailer Frame	17	2	2-148	Castle Nut, M20 x 1.5
3	1	2-134BL3	Tailgate	18	5	2-149	Nut, M8 x 1.25
4	2	2-135BL3	Axle Mount Plate	19	14	2-150	Nut, M6 x 1.0
5	1	2-136BL3	Axle Tube	20	2	2-151	Bolt, M8 x 1.25 x 100
6	2	2-137BL3	Axle Spindle	21	1	2-152	Bolt, M8 x 1.25 x 70
7	1	2-138BL3	Rear Tongue Tube	22	2	2-153	Bolt, M8 x 1.25 x 60
8	4	2-139OR1	Side Containment Rack	23	2	2-154	Bolt, M6 x 1.25 x 65
9	1	2-140OR1	Front Containment Rack	24	6	2-155	Bolt, M6 x 1.25 x 50
10	1	2-141BL3	Latch Tube Assembly	25	2	2-156	Bolt, M6 x 1.25 x 45
11	1	2-142BL3	Connector Pocket	26	4	2-157	Bolt, M6 x 1.25 x 40
12	1	2-143BL3	Front Tongue Tube	27	2	2-158	Cotter Pin
13	2	2-144	Trailer Wheel	28	1	2-159	Clevis Pin
14	2	2-145	Washer, M20	29	1	714-0117	Hair Cotter Pin
15	7	2-146	Washer, M8	—	1	3-80	Owners Manual

SpeedEPart *the fastest way to purchase parts* www.speedepart.com

REPAIR PARTS

Agri-Fab, Inc.
809 South Hamilton
Sullivan, IL. 61951
217-728-8388
www.agri-fab.com

This document (or manual) is protected under the U.S. Copyright Laws and the copyright laws of foreign countries, pursuant to the Universal Copyright Convention and the Berne convention. No part of this document may be reproduced or transmitted in any form or by any means, electronic or mechanical, including photocopying or recording, or by any information storage or retrieval system, without the express written permission of Agri-Fab, Inc. Unauthorized uses and/or reproductions of this manual will subject such unauthorized user to civil and criminal penalties as provided by the United States Copyright Laws.