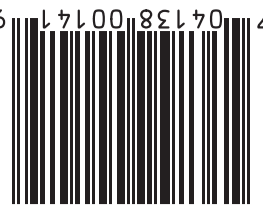


DESIGNED FOR LEAF PICKUP ONLY, WILL NOT WORK FOR GRASS COLLECTION.

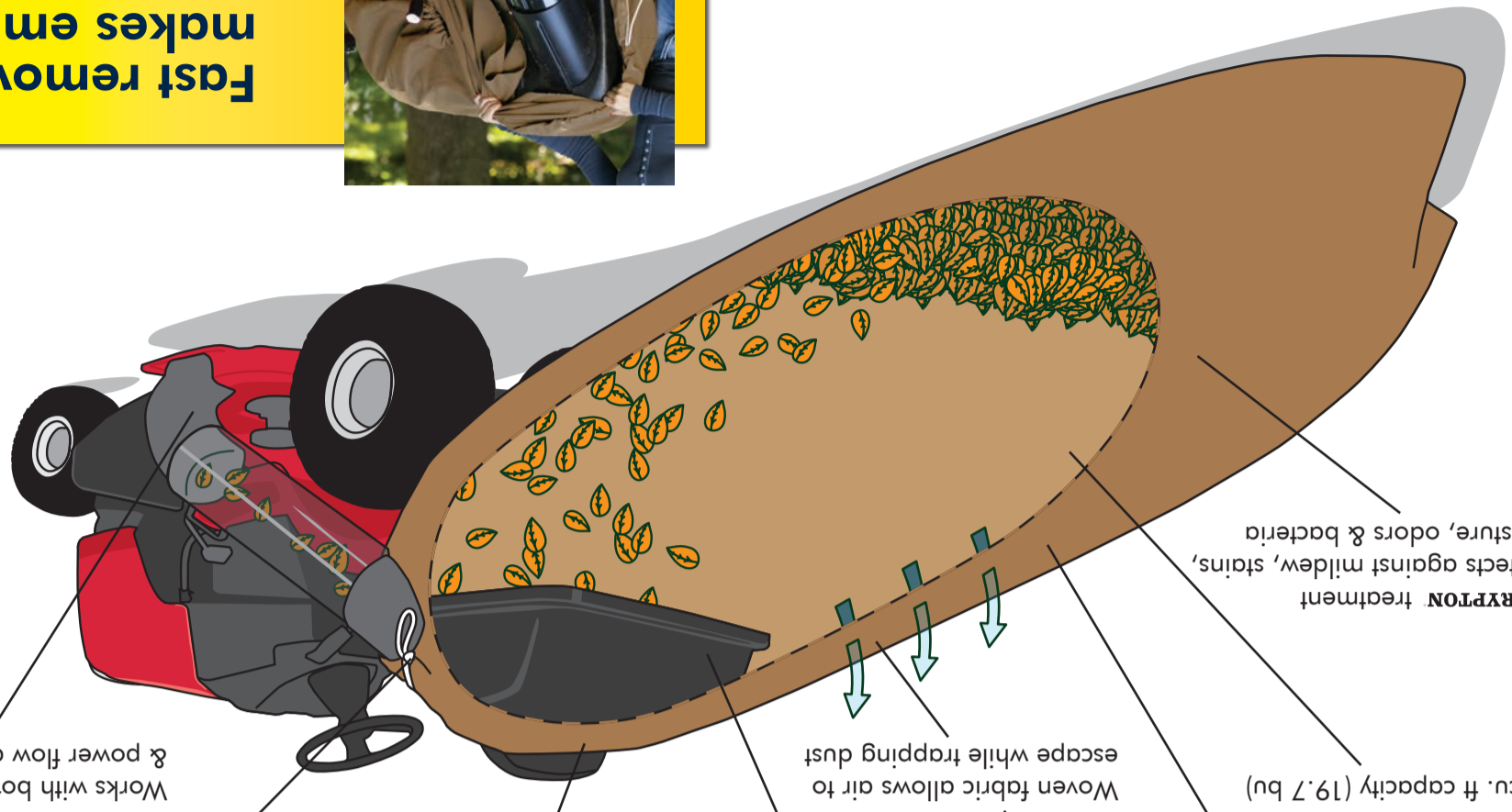
7 0413811001419



FOLDS AND STORES ANYWHERE!



Fast removal makes emptying EASY!



Works with both direct flow & power flow decks

Simple drawstring design attaches in seconds

Front flap shields operator against dirty blowouts

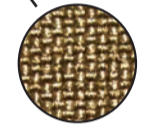
Fits any two-bag collection unit

Abasion resistant material designed to last

54 cu. ft capacity (19.7 bu)

CRYPTON treatment protects against mildew, stains, moisture, odors & bacteria

Woven fabric allows air to escape while trapping dust



TERRAKING LEAF BAG
Transform your lawn tractor into a leaf collector in the blink of an eye.

TERRAKING LEAF BAG

CLEAN & SIMPLE REIGN SUPREME.

LEAF BAG

The only leaf collection system you'll ever need. Collection bag only! Requires material collection system (Hopper) for use.



Backed up with a **1** YEAR warranty

TERRAKING

USER MANUAL



1. Remove bags from hopper of the collection unit. (Not shown)
2. Drape the leaf bag opening over the collection unit with the logo facing up.
3. Pull the flap down over the front of the hopper, and wrap the sides of the bag around the collection unit.
4. Tighten cinch cords equally on both sides, assuring that the front flap of the leaf bag is tucked inside. To prevent from catching or tangling wrap up excess cord.

⚠ WARNING

DO NOT reverse the tractor with the bag installed
DO NOT operate if bag is not tightly secured to the hopper
DO NOT allow any children on or near the unit

Before installing the bag, mow around all unusual areas blowing material out where it can be easily picked up.

CAUTION: Do not allow dry leaves to collect on the engine or muffler area of the vehicle.



To Tighten Cord:
Push in on center loop of the cinching device and pull the end of the rope until taut.



To Release Cord:
Pull back on the center loop of the cinching device.