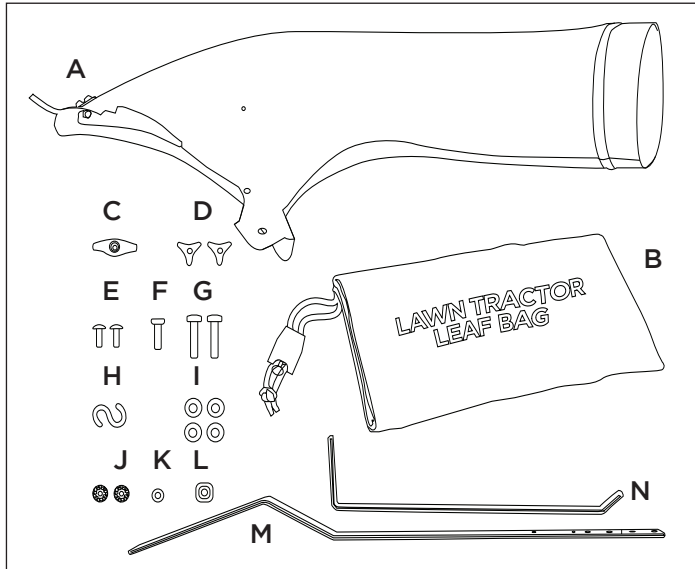


12 cu. ft. Leaf Bag with Chute Kit (LTLB95003)

Includes one 10 bu. 12 cu. ft. Leaf Collection Bag and Chute Kit Assembly.

Product Compatibility

Compatible with Cub Cadet Models XT1 LT42, XT1 LT46, XT2 LX42, XT2 LX46



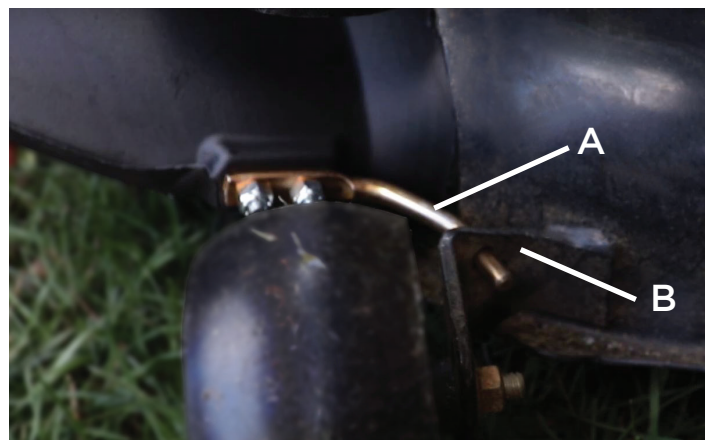
Kit Includes

	Description	Qty.
A	Plastic Deck Chute	1
B	12 cu. ft Leaf Bag	1
C	Two-Arm Knob	1
D	Three-Arm Knob	2
E	1/4 Truss Head Screw	2
F	5/16 in. Hex Bolt	1
G	3/8 in. Hex Bolt	2
H	S-hook	1
I	3/8 in. Washer	4
J	1/4 in. Nylock Nut	2
K	5/16 in. Washer	1
L	5/16 in. Flange Nut	1
M	Bag Bracket	1
N	Guide Bracket	1

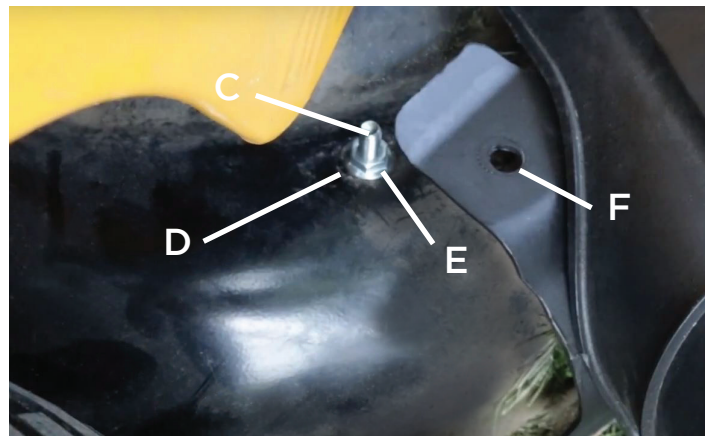
WARNING: This bag is not intended to completely replace the bags/baskets on your collection system. Leaf bags are designed for leaf collection only.

Installation Instructions

1. Mount the plastic deck chute to your deck by sliding the wire form (A) into the front gauge wheel support (B) on the side with the discharge opening.

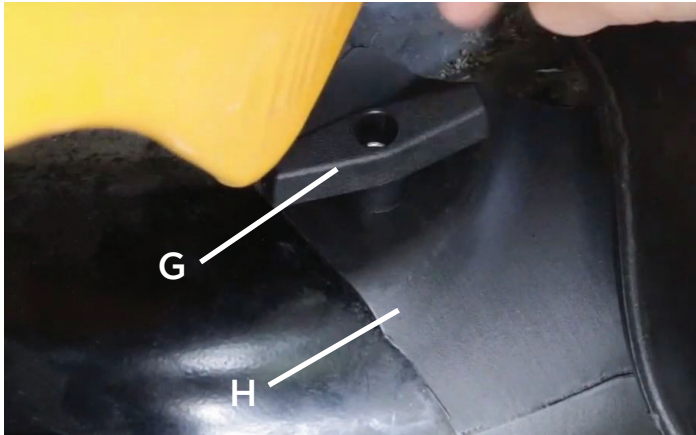


2. Install 5/16 in. bolt (C) through the hole (D) located in the right rear of the mower deck behind the discharge chute, then tighten the 5/16 in. Washer and flange nut (E) onto the bolt.

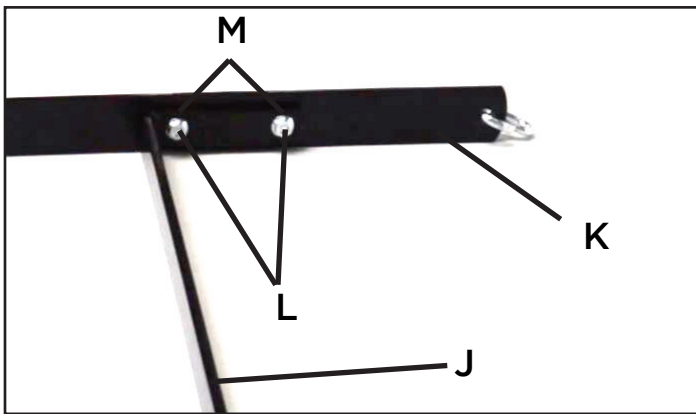


3. Slip the rear hole (F) in the chute over the bolt installed in step 2.

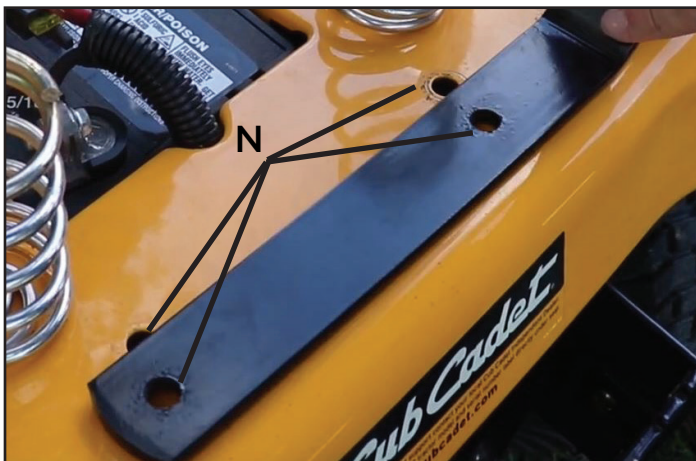
- Tighten the two-lobe knob (G) onto the bolt to secure the plastic deck chute (H) to the mower deck.



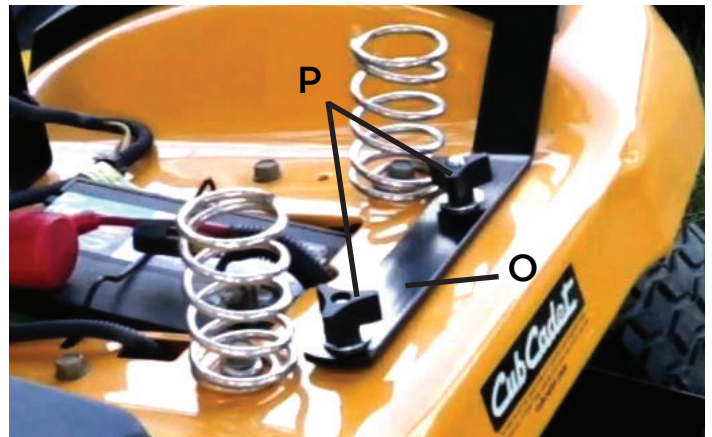
- Mount the guide bracket (J) to the bag bracket (K). Insert the two 1/4 Truss Head bolts (L) into the end of the guide bracket and then through the two predrilled holes located on the end of the bag bracket. Secure bracket in place using the two 1/4 in. Flange Nuts (M).



- Install the two 3/8 in. Bolts through the two holes (N) located towards the rear of the tractor's fenders behind the seat, then install



- the bag bracket (O) onto the bolts and secure them in place using the two three-lobe knobs (P).



- Slide leaf bag opening onto plastic deck chute. Cinch the bag by using the leaf bag's plastic cord lock (R). To tighten, pull the center loop of the plastic cord lock out, pull the drawstring (S) until tight, then push the center loop back inside the cord lock to hold the drawstring in place.



- Hang Leaf Bag on S-hook (T) using Grommet. To prevent interference and tangling, hook the drawstring (U) onto the S-hook.



Practice Safe Maintenance

1. Disengage mower blades and set parking brake before installing, adjusting, or removing leaf bag.
2. Always follow safety recommendations from your mowers manufacturer.
3. Avoid reversing. Reversing can result in damage to bag and tractor/mower. Bag may get lodged in tires or contact rear exhaust.
4. If the bag is too heavy or too large to handle in tight spaces, tie off a small portion at the end of the bag to resize.
5. If your bag accidentally rips or gets a hole in it, sew it, tape it, or use an iron-on patch to close it as soon as possible.
6. To clean your bag, you can hose it off and then hang it up to dry.

Removal and Emptying

1. Drive your Leaf Bag to preferred emptying location.
2. Unhook the drawstring, then loosen the cord lock by pulling back the center of the plastic loop.
3. Remove Leaf Bag from S-hook.
4. Remove the Leaf Bag from the plastic deck chute.
5. Empty the Leaf Bag by grabbing the two back corners and shaking out the leaves.

Warranty

Lawn Tractor Leaf Bag products are guaranteed to be free from defects in material and/or workmanship and to perform as advertised when properly assembled, installed, used, and maintained in accordance with written instructions. Failure to adhere to this will void the warranty. Lawn tractor Leaf Bag will not be responsible for labor, loss, or consequential damage of any kind or character caused by defective parts, or for charges incurred in the replacement or repair of defective parts. Lawn Tractor Leaf Bag reserves the right to request photos or return of damaged/defective parts. To submit a claim, please have your original purchase date and a copy of your receipt.

Warranty Period

Lawn tractor Leaf Bag products are warranted for a period of 1 (one) year after the purchase date. This product is warranted by Lawn tractor Leaf Bag to the original purchaser/customer against defects in material and workmanship under normal operating conditions.