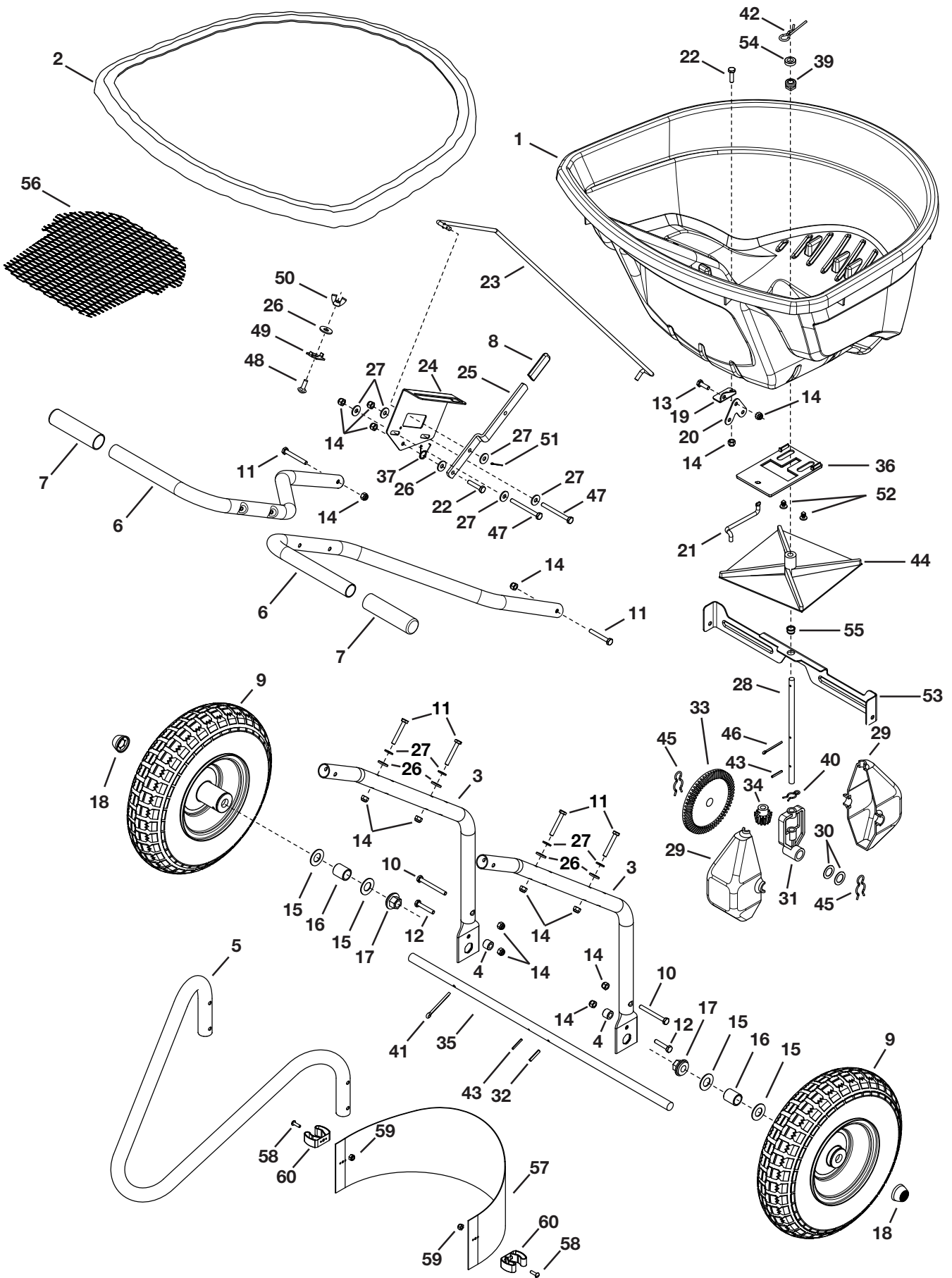


45-05481



45-05481

REF	QTY	PART NO	DESCRIPTION	REF	QTY	PART NO	DESCRIPTION
1	1	41084ORG	Hopper	33	1	47209	Gear, Large
2	1	41316	Hopper Cover	34	1	47205	Gear, Small
3	2	2-534BL3	Tube, Hopper Support	35	1	45805	Axle
4	2	28325	Spacer	36	1	45344	Plate, Flow
5	1	42004BL3	Tube, Stand	37	1	42347	Spring, Torsion
6	2	2-538BL3	Tube, T-Handle	38	—	—	—
7	2	2-554	Grip, Handle	39	1	44285	Bushing, Hopper Bottom Black
8	1	43848	Grip, Control Arm	40	1	49898	Clip, Hairpin 5/8
9	2	45825G	Wheel	41	1	46855	Pin, Cotter 3/16" x 2"
10	2	49870	Bolt, Hex 1/4-20 x 2-1/2	42	1	48934	Hairpin, Agitator
11	6	1509-69	Bolt, Hex 1/4-20 x 1-3/4	43	2	46055	Pin, Spring 1/8 x 1
12	2	46699	Bolt, Hex 1/4-20 x 2	44	1	04367	Spreader Impeller
13	1	43012	Bolt, Hex 1/4-20 x 3/4	45	2	49897	Clip, Hairpin 7/8
14	15	47189	Nut, Hex 1/4-20 Nylock	46	1	43093	Pin, Cotter 1/8 x 1-1/2
15	4	R19212016	Washer, .6562 x 1.25 x .0598	47	2	43796	Bolt, Hex 1/4-20 x 2-3/4
16	2	45280	Spacer, .64 ID x .88 OD x .625	48	1	44950	Bolt, Carriage 1/4-20 x 3/4
17	2	45279	Bearing, Flange	49	1	24858	Adjustable Stop
18	2	48499B	Hub Cap	50	1	47141	Nut, Nylon Wing 1/4-20
19	1	27276	Bracket, Drive Link Mount	51	1	44101	Pin, Cotter 3/32 x 3/4
20	1	27277	Bracket, Drive Link	52	2	48402	Plug, 1/4" (Christmas Tree)
21	1	41929	Rod, Drive Link	53	1	27313BL3	Cross Brace
22	2	43661	Bolt, Hex 1/4-20 x 1	54	1	23625	Spacer
23	1	41928	Rod, Flow Control	55	1	42839	Bushing, 3/8" Plastic
24	1	27322BL1	Bracket, Flow Control	56	1	45557	Hopper Grate
25	1	24856BL1	Arm, Flow Control	57	1	45338	Salt Deflector
26	6	1543-69	Washer, Nylon .3281 x .75	58	2	43346	Bolt, Slot 10-32 x 5/8"
27	9	43088	Washer, 1/4 Std .312 x .734	59	2	43662	SEMS Nut, 10-32
28	1	45804	Shaft, Spreader	60	2	42784	Plastic Coated Clip
29	2	47212	Housing, Large Gear		1	69601	Transmission Assembly - not shown
30	2	44125	Washer, .625 x 1.0 x .03				(includes 28, 29, 30, 31, 32, 33, 34, 35, 40, 43, & 45)
31	1	47204	Yoke, Large				
32	1	43659	Pin, Spring 3/16 x 1		1	3-236	Owner's Manual